

The number 2019 is rendered in a large, bold, sans-serif font. Each digit is filled with a complex, multi-colored geometric pattern of triangles and polygons. The colors transition from red and orange on the left, through yellow and green in the middle, to blue and purple on the right. The number has a slight 3D effect with a dark shadow beneath it.

2019

A M T E 2 0 1 9 A N N U A L R E P O R T

T A B L E O F C O N T E N T S

Report from the President	1
President Elect	3
Executive Director & Headquarters	5
Executive Director Designee	7
Constitution and By-Laws	8
Nominations and Elections	8
AMTE Contractual Services	8
Elected Board Members	
Treasurer	9
Secretary	11
Member-at-Large	12
Membership Division	13
Membership	13
Affiliates	14
Awards	14
Professional Learning Division	15
Annual Conference and Program	15
Local Arrangement Committee	16
Professional Development	17
STaR Fellows Program	17
Technology	17
Publications Division	18
MTE Journal	18
Connections! Newsletter	19
CITE Journal	19
Publications Review	20
Advocacy, Equity, & Research Division	21
Advocacy	21
Equity	22
Research	22
Communications & Outreach Division	23
Web Development	23
Sponsorship	24
Marketing	24
STaR Fundraising	24
2019 & 2020 Award Recipients	25
AMTE Organizational Structure 2019	Back Cover

REPORT FROM THE PRESIDENT



Michael D. Steele

President

University of Wisconsin-Milwaukee

Welcome to the AMTE Annual Report. We began this publication in 2018 as a way of better communicating to the membership the annual work of the AMTE Board and our dozens of volunteer committee members. I'm pleased to introduce this report by highlighting some of my work over the past year. I would encourage you all to spend some time with this report, and in particular reading about the work of our divisions and committees within them. Our committees do amazing and diverse work each year to advance the work of mathematics teacher education and to support the mission of AMTE. And if you're reading this at our 2020 Annual Meeting in Phoenix, please keep an eye out for ribbons identifying our committee members and thank them for their service to our organization.

Some Highlights of the President's Work: 2019 Edition

This year has been my first year as President, and I am incredibly thankful for the work of Randy Philipp, Immediate Past President, and Tim Hendrix, Executive Director, in helping me learn the role and prepare me to do this important work in the service of AMTE. I have stepped into the work of representing AMTE through presidential talks at our sibling organizations' conferences, NCSM, NCTM, AMATYC, and SSMA.

With Tim, I have represented AMTE at the Conference Board of Mathematical Sciences (CBMS) meetings, an important leadership group made up of 18 mathematics professional societies. With our outstanding facilitator team, I engaged with our STaR fellows this past summer in Park City, Utah. I've supported our AMTE professional webinars, communicated with the membership through my Connections columns, and worked to keep all of you updated about changes to our organization and important issues in mathematics teacher education.

The leadership of AMTE is significant work of the president. The president, immediate past-president, and executive director participate in weekly leadership meetings where we chart the course of our organization and set priorities for the Board and our committees to deliberate and discuss. We have been blessed this year to be joined by Executive Director-Designee Shari Stockero as she learns the role she will assume at the close of the 2020 Annual Meeting. We have guided the day-to-day work of the organization, the monthly Board meetings, and for the first time begun to engage in a long-term planning process for AMTE.

The work of AMTE is large and complex, and even the pages of this report isn't sufficient to summarize it all. In the short space I have that follows, I will highlight a few aspects of this year's work that I have found particularly insightful and valuable.

Visits with our Affiliates

One of my personal priorities in my first year of the presidency is to understand the day-to-day work that our mathematics teacher educators are doing, and the ways in which our national organization can better support that work. To that end, I made it my priority to visit with affiliates at their annual meetings. This has allowed me to share important information about AMTE's strategic priorities, to hear how they see their work as relating to those priorities, and to better understand the type of support they'd like to see in advancing their own work of mathematics teacher education. These conferences have also allowed me the opportunity to understand the local contexts in which our mathematics teacher educators are working and hear about the innovative work they are doing in their content, pedagogy, and field work with preservice teachers and their professional development efforts with practicing teachers.

These visits have also helped me come to understand the diverse constituencies that our affiliates serve. I have interacted with mathematicians and math educators from two- and four-year institutions, regional professional developers, district mathematics supervisors, and classroom teachers as a part of these visits. As you look around our Annual Meeting, I encourage you to ask yourselves, what voices are present at our convenings? What voices are absent? How would our conversations change with a more diverse set of stakeholders at the table? These wonderings have informed my thinking as we work to diversify our membership and to serve their needs. My profound thanks to our affiliates in Iowa, Michigan, New Jersey, Alabama, North Carolina, Indiana, and Texas for hosting me either in person or virtually this year.

Building our Future

This past year marked a number of significant transitions, and there are a number more that will take place at the close of the 2020 annual meeting. We have said thank you and farewell to our longtime Conference Director and Assistant Conference Director, Susan Gay and Carol Lucas. Soon, we will thank Tim Hendrix for six incredible years as the AMTE Executive Director, recognize Immediate Past President Randy Philipp for his four years of leadership, and hand off the digital infrastructure that Associate Vice President for Web Development Joe Champion has built for us since 2013. Our organization has welcomed a new Conference Committee and inaugurated a Membership Task Force to further evolve our annual meeting and diversify our membership, and we welcome new elected and appointed leaders.

The work of leadership development is challenging, doubly so for an organization that relies on volunteers for almost every aspect of our work. As we think about our future as an organization and the people who will shape that future, I note that this past summer we marked our 10th STaR cohort. Our leadership structure is now bright with STaR fellows and other leaders (like myself) who have grown up through their entire professional life cycle with AMTE, from graduate student to early-career mathematics educator to veteran and mentor. As we begin to think about our future beyond the regular year-to-year planning that the Board and committees have done, we must think about the ways in which we support and nurture our future leaders from all sectors of mathematics teacher education. As you walk through the 2020 Annual Meeting, no matter where you are in your career path, I encourage you to do two things. First, find someone who has shaped your career and thinking in some way at the conference, and tell them how they've done that for you. And second, find a scholar earlier in their career whose work you value and share with them why. The first step in developing leaders is recognizing the everyday leadership in which we all engage.

On the Horizon

As we look across the desert horizon here in Phoenix, I ponder what is on the horizon for AMTE. This year, we will provide a rich set of opportunities to hear from you as our members about where you would like to see AMTE go and what you would like our organization to do in the next five to ten years. This work will help inform the creation of a strategic plan that will guide future AMTE Boards, while still allowing for leadership to be nimble and responsive to new conditions in our field and for new leaders to contribute their unique ideas. We will seek your ideas about how to better engage a diverse set of mathematics teacher educators, to elevate voices that we have not historically elevated, and to provide engagement and resources to support your work both at our conferences and in the spaces between them. Together, this work will help advance AMTE's goals of a more equitable and diverse mathematics teacher education landscape that supports meaningful mathematics learning for each and every student.

My deepest and most humble thanks to this year's Board for our amazing work together: Tim Hendrix, Randy Philipp, Sandi Cooper, Sarah Quebec Fuentes, Enrique Galindo, Christa Jackson, Eva Thanheiser, Babette Benken, Lynn Breyfogle, Dusty Jones, Maggie McGatha, and Sarah van Ingen Lauer. Thanks to all our Associate Vice Presidents and committee members about which you will read and for their service to AMTE now and in the future. I'm excited to see what's ahead for all of us.



Mike Steele

President

PAST PRESIDENT



Randy Philipp

Past President

San Diego State University

The AMTE immediate past president serves on the AMTE Board of Directors, and in this capacity the past year I attended all board meetings, including our annual fall retreat. I participated in weekly phone calls with President Mike Steele and Executive Director Tim Hendrix, during which we discussed issues that had arisen within AMTE divisions, discussed communication with other organizations, and planned for subsequent board meetings. Beginning in the summer, soon-to-be Executive Director Shari Stockero joined us on these weekly calls. I also served as board-liaison on the Nominations and Elections Committee and I took the lead on organizing the 2020 AMTE Opening Plenary Session.

Over the past four years, one area that required my attention was the AMTE restructuring, which was implemented in 2017. The restructuring was designed to enable our organization to more evenly distribute our work over five divisions and headquarters so that we could expand upon the obligations our evolving organization has assumed. The restructuring was associated with some challenges, including balancing the organization's continued work while some of that work was shifted to different and new positions, and new relationships were being forged. Such change is most challenging to those filling the new positions, such as vice presidents, and to those who had grown accustomed to work within existing structures. Although I expect further tweaking of responsibilities and relationships while we continue to improve the way we function within and across divisions, my overall assessment is that the divisions have become more autonomous and our work has been more evenly distributed. As such, I conclude that the restructuring has been a success! We now have a structure that will better enable AMTE to continue to serve as the largest organization of mathematics teacher educators.

When I was elected in 2015, I had no idea how much time I would spend putting forth AMTE's values in our hyper-politicized national environment. When mathematics teacher education scholars found themselves the victims of unscholarly and disingenuous attacks by individuals and media outlets that did not care to understand our work, but instead tried to leverage it to push their own agendas, AMTE stood with our scholars. When we learned in 2017 that Texas, the state hosting our 2018 annual conference, passed House Bill 3859 making it legal for private agencies to discriminate against LGBTQ+ families wishing to adopt children or serve as foster parents, we added a plenary session addressing the intersection of LGBTQ+ issues and mathematics education, and we added an all-conference reception to learn about and honor community organizations working in support of local LGBTQ+ communities. When I thought that public events or discourse among U.S. politicians at the highest levels needed to be called out for their potentially negative effects on the children or teachers in our schools, we in AMTE spoke up. AMTE's constitution and bylaws define our purpose and guide our practice, but it is only through operationalizing these values again and again do we establish our organization as a leader in promoting supportive environments for mathematics teacher educators to carry out their work.

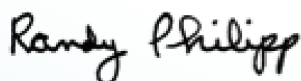
AMTE begins each annual conference with an all-conference session comprised of announcements and recognitions before turning to an opening plenary session. AMTE's board is responsible for deciding upon the opening plenary speakers, and historically we have selected a timely topic and invited a speaker or group of speakers who are experts on the topic. As described in the previous paragraph, I organized and participated in an opening plenary session at the 2018 conference addressing LGBTQ+ issues. I also organized and participated in the 2019 conference opening plenary session regarding challenges and opportunities in embodying our commitment to equity. The board decided that the all-conference opening plenary session at the 2020 conference should also address issues central to the AMTE community, and although I will not participate in the session, I took the lead on organizing the session to address issues and opportunities while we look to the long-term future of mathematics teacher education, in general, and AMTE's role in that future, in particular. As positioned, the opening plenary session has the potential to set the tone by raising issues that attendees may continue to discuss over the next 2.5 days. A

question for AMTE is whether the Board continues to play a central role in organizing the content of the opening session, or we return to limiting the Board's role to selecting a topic and entrusting a group of experts with planning and delivering the opening session. I encourage you to share your thoughts about this matter with me or with members of our Board of Directors.

I am a backpacker, and every other summer I organize a Sierra Nevada Mountain trip for which my friends and I strap on our backs everything we need to live in the mountains for 5 days. I look forward to each backpacking trip because the forests and mountains are peaceful, I love the people with whom I hike, and I appreciate the physical challenge. But backpacking is also difficult, because we hike up and down mountains carrying 30–40 pounds, our feet get sore, we are bitten by mosquitoes, and we are cold and uncomfortable sleeping in a sleeping bag on the ground. So as much as I look forward to and enjoy each trip, when it ends, I am ready for it to be over. And yet, I hike again.

Serving as AMTE president-elect, president, and immediate past president feels like a wonderful backpacking trip, a trip that will end for me at the 2020 AMTE Business Meeting that closes the annual conference. I want to thank the members who have served AMTE, both on the Board of Directors and on committees. The leadership team met in December for two days and I feel that AMTE, under President Mike Steele, President-Elect Megan Burton, and soon-to-be Executive Director Shari Stockero, is in excellent hands! I especially thank outgoing Executive Director Tim Hendrix, whose service over 7 years has supported AMTE through an important period in our evolution. Tim's actions are a constant reminder that caring about mathematics teacher education is synonymous with caring about mathematics teacher educators. He reminds me of this by treating each person with respect, kindness, warmth, and dignity. The work of mathematics teacher education, like that of teaching, requires complex competencies and commitments, but it also requires that we never forget to place the people who do this work at the center of our hearts. Thanks, Tim.

And to the rest of AMTE's community, I thank you for entrusting me to serve as president. Maybe I'll see you on a backpacking trip!



Randy Philipp

Past President

EXECUTIVE DIRECTOR



Tim Hendrix

Executive Director
Meredith College

Dear AMTE Colleagues and Friends:

Someone once said that **“as we lose ourselves in the service of others, we discover our own lives and our own happiness.”** As I reflect not only on the last year, but also on the last seven years serving AMTE as Executive Director, these words ring true. Each day and every year, as I work with AMTE colleagues to further the work of our organization, I learn more about myself and how fulfilling that work can be.

The Executive Director of an organization serves as the legal and fiscal agent for the organization and provides/manages a home—the headquarters—for the organization. Any official documentation from the organization comes through the headquarters and the Executive Director is the signatory in any contractual agreement that the organization makes with another entity. This includes multiple insurance policies; agreements with grants, sponsors, and other funding sources; partnerships with other organizations; contracts with vendors such as conference hotels and meeting venues; and publication agreements with publishers—to name a few. Managing these contracts and staying current with all of the policies is a weekly task and helps protect our organization fiscally.

One of the primary purposes of an Executive Director is to support the President, officers, and Board of Directors in fulfilling the mission and goals of the organization. Indeed, this is where the bulk of the day-to-day work lies, **along with the real joy of serving AMTE.** I consider it the highest honor to have the

opportunity to support my colleagues in the mathematics teacher education community doing the work of our profession. An incomplete sampling of the types of work that I do on a regular basis includes the following:

- Meet weekly with the President and President-Elect (or Immediate Past President) to discuss AMTE activities, priorities, and issues
- Meet weekly with the Associate Vice-President for Web Development to discuss the public face of AMTE—our web presence and media presence on Facebook, etc.
- Organize and help lead monthly Board of Directors meetings online
- Plan, host, and help lead our Annual Board Retreat in the fall—a two-day planning retreat
- Attend Conference Board of Mathematical Sciences (CBMS) meetings twice annually and participate in CBMS initiatives as they arise
- Meet biweekly with the AMTE Treasurer and work with our AMTE Treasurer, AMTE Financial Services Manager, and Finance Committee to monitor AMTE finances and budget
- Respond to membership requests for assistance with membership renewal, conference registration and other issues
- Send emails to AMTE membership about important announcements, deadlines, and opportunities
- Set up, advertise and facilitate webinars in conjunction with our Professional Learning Division
- Support the Vice-Presidents and AVPs in each division to carry out their work

The bulleted list above is but a sample of the types of tasks that are done on a regular basis, but they do not convey the real joy that comes from working alongside, communicating with, and learning from trusted colleagues who are also dear friends in the profession.

AMTE continues to be a thriving organization that is busy year-round, furthering the work of mathematics teacher education. In the last year, some highlights that seem particularly significant:

1. Our “AMTE year” began last February in Orlando, with our 23rd Annual Conference. At that conference, we had the highest number of registered participants in the history of our organization. AMTE continued its legacy of providing a high-quality conference, shining a light on both groundbreaking research and effective practice, supporting the work of MTEs. What you may not have noticed explicitly was the amount of work and attention that our leadership focused on the Opening Session. For many years, the opening plenary was an individual invited speaker who largely determined the theme and focus of their presentation. In the last three years, the Board of Directors with the leadership of our President and Past-President (or President-Elect) **has worked with a team of members to identify important themes that we should address as a community,** and how we might do so in a way that challenges and sets a positive tone for our conference. Seeing the dedicated work of those individuals committed to this task has been nothing short of inspiring.

2. In the last year, our Treasurer Sarah Quebec Fuentes along with our Financial Services Manager Mary Beth Wallace, and with the support of Past Treasurer Anita Wager, have completely reshaped our budgeting process and reporting for the future. Our old budget process was designed when we were a smaller organization and had less infrastructure. Now, with 6 divisions (including Headquarters), we have a complex set of activities, some of which generate income and many of which require expenses. I had the pleasure of working with Sarah and Mary Beth to establish a new budgetary process that is aligned with our divisional infrastructure. They have put that new system in place and this will help AMTE to track its finances more carefully as we move into the future.

3. **The 2019 STaR Institute:** Each time I have the opportunity to work with the STaR Fellows as a consultant, I leave both exhausted and energized. We find commonalities in our scholarship and in our teaching; we learn from and about each other. The community of AMTE grows stronger when we spend time with our newer colleagues as they enter the profession. STaR is an organized way to do this, but if we can all find a small amount of time to spend with new colleagues, our larger community will be richer for it.

4. Early in 2019, we conducted a national search for the next Executive Director. The search committee included current and former Board members, including both current and former presidents of the organization. In the spring, we were delighted to name **Shari Stockero** (from Michigan Technological University) as the Executive Director Designee. I have had the privilege of working alongside Shari, and I can tell you that she is going to be a tremendous leader for our organization. She is knowledgeable, thoughtful and compassionate, well-organized and productive. She sees and thinks about the big picture as well as understand the details that must be executed. We will be well-served under her leadership as the Fourth Executive Director of AMTE.

5. After the retirement from the roles of Conference Director Susan Gay and Assistant Conference Director Carol Lucas, the organization wanted to honor their legacy by building a team to carry out the work of planning for conferences in the future. The newly formed Conferences Committee, led by 2019 AVP for Conferences Trena Wilkerson and AVP Designee Colleen Eddy, has worked tirelessly to honor our legacy by planning for and presenting the highest quality conference possible for 2020. Our Annual Program AVP, AnnaMarie Conner, and the Conferences Committee have come together in a herculean team effort. We are learning lots and thinking about ways for our conference to grow and evolve in the future. Please thank them if you see them at the conference!

Working with our Board of Directors and AMTE's leadership in this time of transition is an amazing experience; AMTE has an outstanding group of vice-presidents, who are responsible for carrying out the charges of each of the divisions. Elected Board officers, Vice-Presidents, and Associate Vice-Presidents are all working voluntarily to make AMTE an effective voice on all fronts.

Looking back over the last seven years (one year shadowing then Executive Director Nadine Bezuk) and six years serving as Executive Director, I am amazed at many of the ways in which AMTE has grown, matured, evolved, and how that maturation has impacted my life as well. Over these years, as an organization, AMTE has:

- Increased its steady membership by almost 200 members
- Reorganized its infrastructure to reflect our mission and goals, helping us to expand our work on multiple fronts
- Increased the number of individuals who serve as volunteers in committee, task force, and leadership roles
- Increased our digital presence with the evolution of our website and social media and produced professional level graphics and products, under the direction and efforts of Joe Champion and Tony Nguyen
- In partnership with Info Age Publishing, re-published the AMTE Monograph Series and published four volumes in the new AMTE Professional Book Series
- Continue to develop the partnership with NCTM to publish MTE, and renew that partnership for the future
- Become a more active partner in CBMS and be engaged in cooperative efforts across mathematics societies
- Under the leadership of a stellar task force of writers, self-published the Standards for Preparing Teachers of Mathematics, a landmark document and set of principles and guidelines for our work as MTEs (By the way, IAP Publishing is sharing the copyright and has helped us to publish the Standards in print—you can order your full-color, print copy at the Conference!)
- Held almost 50 webinars of informative, professional development for its members and other colleagues in mathematics education
- Fully transitioned the STaR Fellows program under the AMTE umbrella of professional activities
- Sought (and is completing) the process to become incorporated, still as a non-profit organization and has taken steps to build professional relationships with legal representation, financial and tax services, and broader insurance coverage
- Increased our annual contributions by more than 30% to an average of \$330K online contributions annually, in addition to traditional and stock donations
- Addressed complex issues impacting the field and scholarship of mathematics teacher education, taking positions that reflect our values and exhibiting support for our colleagues and their work

I could add many more bullets, but I am amazed by the sheer amount of work our organization has undertaken, and am awed by the hundreds of members who have volunteered their time and energy to make these projects and dreams a reality.

Lastly, I want to share with you the joy of working alongside the outstanding leadership of our organization. The Executive Director works closely with the Presidents, the Board of Directors, and the AVPs, but most closely with the Presidents, the Treasurer, the Conference Director, the Website Director, and our Graphics Designer.

Each president under whom I have served has been the right person for that time in AMTE's history. Appointed when Marilyn Strutchens was president in the time of CCSS-M, Marilyn led us to consider issues of equity and our responsibility in advocacy as MTEs. Fran Arbaugh asked AMTE to focus on our humanity as MTEs and organizationally, she challenged the Board to examine our structure and its effectiveness, considering where we

could grow and change. Christine Thomas came on board to lead us in the process of restructuring—assessing and rebuilding our infrastructure to reflect our goals more closely. Randy Philipp became President as we were beginning to implement the new structure, and he worked diligently to help us make sense of our new structure and how to operationalize it. Simultaneously, national issues arose that needed a strong, compassionate, supportive voice from our community and he boldly led us to become that voice. Mike Steele, our current president, is a master at elevating voices around the table and supporting individuals to do their work, allowing the new structure to be most effective. And he continues the tradition of AMTE presidents who is thoughtful, compassionate and listens carefully to all voices, while speaking words that our community needs to have spoken on our behalf. These presidents have been inspiring models of leadership and mentors to me, and are now dear to me as friends.

I want to thank these presidents, the Board members with whom I have served, and the many AVPs and AMTE members who have been supportive during my time as Executive Director. I have learned so much from each of you about what it means to be a community of practicing scholars and educators. I have learned how important it is that we care about and support our colleagues in mathematics teacher education. I hope, through this work, that I have been effective in helping AMTE carry out its mission and be a professional community and family to each other.

I encourage you to read the full 2019 Annual Report to see the breadth and depth of the work that goes on in AMTE. This is our third Annual Report document, as we work to be even more transparent about the work of our organization and to involve as many members as possible along the way. As we move into 2020, it is time for new leadership to step up, bring new ideas, new ways of carrying out the work, and delightfully new energy as, in the words of its first Executive Director Judith Jacobs, “AMTE leads the way!”

Respectfully submitted,

Timothy M. Hendrix

Timothy M Hendrix

AMTE Executive Director

EXECUTIVE DIRECTOR DESIGNEE



Shari Stockero

Executive Director Designee

Michigan Technological University

Although my role as Executive Director does not officially begin until current Director Tim Hendrix steps down at the end of the annual conference, I have already immersed myself in learning the many details of this new role. There has certainly been a lot to learn, but with the opportunities that have been provided for me to learn the ins and outs of the position I am confident that I am ready to begin my service to the organization. Since accepting my appointment in May, I have engaged in following:

- Weekly meetings with President Mike Steele, Past-President Randy Philipp, and Executive Director Tim Hendrix;
- Weekly meetings with Joe Champion and Tim Hendrix to discuss issues with the website and other forms of communications;
- The board retreat in October;
- Ongoing meetings with the Conference leadership;
- Periodic meetings to review organization finances;
- The CBMS meeting in December;
- The AMTE leadership retreat.

One thing that has become clear to me is the dedication and thoughtfulness of our organization's leadership, including (but certainly not limited to!) the President and Past-president, the Executive Director, the VPs, the members of the board, and our web developer. Although I've always known at some level that this was the case, seeing this extraordinary group of leaders in action has made me more fully appreciate the tremendous amount of time and effort that is put forth by our members to allow AMTE to thrive as an organization. It is a great opportunity to become part of this team.

I look forward to beginning my service to AMTE as your Executive director and am excited to see how the organization advances over the next several years. As I transition to this role and continue to learn more about the workings of our organization, I invite you to contact me at any time to make me aware of any issues that arise or to let me know how I can work for and with you to advance AMTE.

CONSTITUTION AND BY-LAWS

The committee reviewed and submitted paperwork for Articles for Incorporation to the executive director to be reviewed and finalized with the assistance of our legal team.

Constitutions and By-Laws Connections Committee

Sararose Lynch, *Westminster College*; Megan Burton, *Auburn University*; Margaret Mohr-Schroeder, *University of Kentucky*; Wendy Smith, *University of Nebraska-Lincoln*; Barbara Swartz, *McDaniel College*; Kevin LoPresto, *Francis Marion University*



Megan Burton

AVP for for Constitutions
and By-Laws

Auburn University

NOMINATIONS AND ELECTIONS

We received numerous nominations for the President, Secretary, and Board Member at-Large positions this year. Ultimately, two people applied for President (one applicant rescinded their application), three for Secretary and 11 for the At-Large seat. Congratulations to President-Elect Megan Burton, Board Member At-Large Marrielle Myers and Secretary Cynthia Taylor.

The nominations process continued to be revised and refined this year. N&E solicited nominations during the 2019 Annual Meeting and had notecards on hand for written nominations. The committee also agreed to move the application due date from July to August, which we believe accounted for the uptick in applicants, particularly for the Board Member at-Large position.

The 2019 election process also experienced major shifts, as Megan Burton ran for President unopposed, a first in AMTE's elections history. Prior to this decision, Toya Frank (AVP), Mike Steele, Tim Hendrix, and other past and present N&E committee members worked hard to solicit additional candidates. The candidates for the At-Large and Secretary positions were rank ordered this year. The candidates who received the highest number of votes were selected for each position.



Toya Frank

AVP for for Nominations
and Elections

George Mason University

Looking ahead to the next election season, the following changes are either underway or suggested for future elections:

- Jennifer Bay-Williams will become the new AVP for N&E as Toya Jones Frank rotates off the committee.
- The N&E Committee is designing nominations cards to gather names of nominees at the 2020 Annual Meeting. The committee will distribute the cards during Friday's luncheon.
- All of the files for this elections season are available electronically as reference for the next election season. These files contain information related to those who applied for positions. The committee recommends revisiting these files if the need for additional candidates arises during future elections.
- The Board should consider adding a checkbox to the application that indicates the person would be willing to serve as Vice President. Since VPs are appointed positions, Nominations and Elections did not have a role in who was appointed but thought getting a list generated of persons interested might help the President in making these appointments.

Nominations and Elections Committee

Lateefah Id-Deen, *University of Louisville*; Natasha Gerstenschlager, *Western Kentucky University*; Angela Broadus, *Benedictine College*; Gwen Lloyd, *Penn State University*; Brenda Strassfeld, *Touro College*



Sarah Quebec Fuentes

Treasurer
Texas Christian University

TREASURER

Liaison to Communications & Outreach Division

The Treasurer manages and documents all of the income (e.g., membership fees, donations, sponsorships, and conference registration) and expenses (e.g., invoices and travel reimbursements) of the organization. The Treasurer completes these responsibilities in collaboration with AMTE's Financial Services Manager, Executive Director, Board, and Finance Committee.

FINANCE COMMITTEE

The Finance Committee members include the President, the President-elect or Immediate Past-President, the Executive Director, the Treasurer, a member of AMTE who is external to the Board of Directors, and the Financial Services Manager. The purpose of the Finance Committee is to oversee the financial health of AMTE. The Finance Committee develops and monitors short- and long-term plans for the financial health of the AMTE organization across the activities of the divisions and headquarters.

The overarching goal of the Treasurer and Finance Committee over the past year was to realign the budget with the structure of the organization. Therefore, the 2020 budget is organized by division. In moving from the old to the new budget structure, the following changes were made:

- Line items were reorganized by division.
- Some individual line items were expanded into multiple line items.
- Obsolete line items were eliminated.
- Special accounts (e.g., STaR Program, Susan Gay Scholarship, EMS Scholarships, and NTLI Fellowship Award) were integrated into the appropriate divisions.
- Conference income and expenses were incorporated into the budget report.

Finance Committee

Anita Wager, *Vanderbilt University*; Randy Philipp, *San Diego State University*; Mike Steele, *University of Wisconsin, Milwaukee*; Tim Hendrix, *Meredith College*; Christine D. Thomas, *Georgia State University*; Mary Beth Wallace, *AMTE Financial Services Manager*

The new budget structure represents the multi-faceted nature of the work of the organization.

DIVISIONS

Headquarters (HQ)

Membership(M)

Professional Learning (PL)

Publications (PUB)

Advocacy, Equity, and Research (AER)

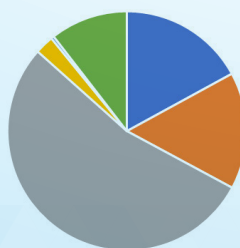
Communications and Outreach (CO)

BUDGET Fiscal year 2020

HQ Income Subtotal	\$84,490.00
M Income Subtotal	\$78,200.00
PL Income Subtotal	\$266,200.00
PUB Income Subtotal	\$12,500.00
AER Income Subtotal	\$2,000.00
CO Income Subtotal	\$52,000.00
Budget Income Total	\$495,390.00

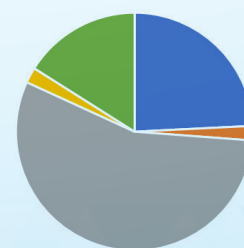
HQ Expenses Subtotal	\$119,940.00
M Expenses Subtotal	\$9,750.00
PL Expenses Subtotal	\$275,700.00
PUB Expenses Subtotal	\$10,500.00
AER Expenses Subtotal	\$0.00
CO Expenses Subtotal	\$79,500.00
Budget Expenses Total	\$495,390.00

Budgeted Income



■ HQ ■ M ■ PL ■ PUB ■ AER ■ CO

Budgeted Expenses



■ HQ ■ M ■ PL ■ PUB ■ AER ■ CO

For the 2019 fiscal year (FY), the organization's income exceeded its expenses. Of the monies in the bank at the end of FY 2019, some is earmarked for the aforementioned special accounts, membership reserves, and rollover into the FY 2020 budget. This leaves \$89,127.46 in deep reserves. A goal for upcoming years is make financial decisions so as to increase the amount of money in deep reserves.

Bank Accounts Total <i>as of 6/30/2019</i>	\$365,270.38
Special Accounts Total	\$102,520.92
Membership Reserves	\$92,932.00
For FY 2020 Operating Budget	\$80,790.00
Deep Reserves	\$89,127.46

	FY 2019 Budget	FY 2019 Actuals <i>7/1/2018 - 6/30/2019</i>
OPERATING INCOME		
Grant Indirects	\$1,900.00	\$1,300.00
Member and Affiliates Dues	\$70,000.00	\$69,965.82
Sponsorships - Non-Conference	\$1,500.00	\$800.00
Interest	\$450.00	\$457.14
AMTE Retail Goods	\$450.00	\$75.00
MTE Journal	\$12,000.00	\$13,129.36
Donations to AMTE General Fund	\$200.00	\$10.00
IAP Book Series Royalties*		\$416.27
Prior Years Income	\$46,035.74	\$46,035.74
Portion of Previous Conference Income	\$15,000.00	\$15,000.00
Portion of Current Conference Income	\$15,000.00	\$15,000.00
TOTAL INCOME	\$162,535.74	\$162,189.33
OPERATING EXPENSES		
Affiliate Dues to NCTM & CBMS	\$475.00	\$405.00
Awards**	\$600.00	\$4,305.77
Board Expenses (Leadership Retreat)	\$15,000.00	\$7,479.32
Restructuring Operating Support	\$56,800.00	\$27,122.58
Headquarters (Labor)	\$27,000.00	\$27,000.00
Executive Director Stipend	\$12,000.00	\$12,000.00
Conference Director Stipend	\$2,500.00	\$1,198.00
Insurance	\$3,500.00	\$3,257.11
MTE Journal Editorial Board	\$12,000.00	\$11,128.54
AMTE/IAP Professional Book Series	\$500.00	\$1,250.00
Standards Dissemination	\$5,000.00	\$0.00
Legal Services	\$4,000.00	\$0.00
Materials for Distribution/Annual Report	\$4,000.00	\$429.20
Taxes to IRS	\$300.00	\$0.00
Travel (Leadership)	\$14,000.00	\$6,405.64
Travel (CITE Co-editors)	\$2,000.00	\$1,094.06
Treasurer's Expenses	\$2,000.00	\$297.00
PayPal Non-Conference Fees	\$4,000.00	\$2,745.22
PayPal Donation Fees	\$0.00	\$332.11
Technology & Website	\$5,000.00	\$4,052.83
TOTAL EXPENSES	\$170,675.00	\$110,502.38
NET INCOME	-\$8,139.26	\$51,686.95

*This line item was not in the original budget.

**This is over the budgeted amount due to gifts honoring outgoing conference directors.



SECRETARY

Liaison to Membership Division

As secretary of the AMTE Board of Directors, my role is to document the work of the board through recording minutes of regular board meetings or any special called meetings. In addition, I maintain a list of board actions, made through motions during board meetings or via email communication. I serve as board liaison to the Membership Division, which includes the Awards Committee, Affiliates Committee, and Membership Committee. In this role, I participate in meetings of these committees during the conference and periodically during the year.

Sandi Cooper

Secretary
Baylor University

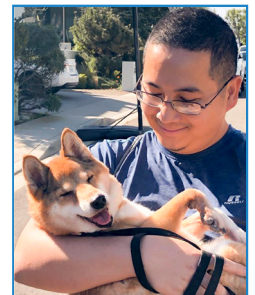
AMTE CONTRACTUAL SERVICES

AMTE contracts with several individuals and businesses to provide services that are essential for our organization to operate. We have a retainer for legal services with Womble, Bond and Dickinson; they are helping us with the process of incorporation. We have a new tax accountant, Ryan Nemitz at Mitchell & Nemitz, PA. Previously, our taxes were prepared annually by Bernard, Robinson, and Company, but they are no longer working with non-profits. We work with Mercer Consumer Services for the various types of insurance that are required of a non-profit association: officer's liability, event liability, and event cancellation insurances. Overlooking all of our financial needs is our AMTE Financial Services Manager, Mary Beth Wallace, an independent contractor who works with our Treasurer and for the organization to maintain our financial records, process payments, and other day-to-day financial operations.

Every year, our media presence continues to be enhanced by the outstanding work of AMTE Graphics Designer Tony Nguyen. Each year, he designs the imagery for our conference theme—its program book cover, name tags, posters, and other graphic assets. In addition, the graphic styling of the Standards for Preparing Teachers of Mathematics and our Annual Reports are examples of his handiwork. At this point, Tony is the longest-serving employee of AMTE, having worked for the organization since 2009 when he was an undergraduate at San Diego State University majoring in graphic design. He has found a way to combine his graphic design aesthetic and technical skills in a field where he can truly help others. Currently, Tony is in the last semester of his graduate coursework for a Master of Science in Orthotics & Prosthetics at California State University, Dominguez Hills...and still doing work for AMTE on the side!!!



Mary Beth Wallace
Financial Services Manager



Tony Nguyen
AMTE Admin / Graphic Design

MEMBERSHIP REPORT

Our AMTE membership continues to remain steady as it has for the last several years. Currently, as of January 26, 2020, our active membership is 978, the same as it was when we reported last year. Each year, the membership numbers fluctuate from 900 all the way to almost 1100 members who are active at any given time. Further, we have a database of almost 4000 records of both current and former members.

Please encourage your colleagues who have been AMTE members to renew their memberships. Look for and encourage colleagues who could benefit from AMTE membership to join. Use this Annual Report as an advertising and recruitment tool to help explain the scope and depth of AMTE's many efforts to support and improve mathematics teacher education.

MEMBER-AT-LARGE

Liaison to Publications Division

In my position as an At-Large Board member, I attended the AMTE Board meetings and was Board Liaison to the Publications Division. In my capacity as Board Liaison, I attended the editorial panel meetings for the Mathematics Teacher Educator (MTE) and some editorial panel meetings for the CITE—Math Journal throughout the year. I regularly reviewed manuscripts submitted to MTE. During the AMTE Board meetings, I, along with the VP for Publications, Babette Benken, provided updates on the activities related to all the AMTE publications as well as to the AMTE Publication Review Committee. I also initiated the recording of podcasts to accompany each MTE article, which began with the Fall 2018 issue and currently have a total of over 5000 downloads. In addition, with Dusty Jones and Joel Amidon, I planned and will start a second podcast series to be housed at AMTE which will address various issues relevant to Mathematics Teacher Educators at all stages. For example, we will have a series titled "I just got hired as" in which experienced Mathematics Teacher Educators will give advice to various positions such as math coaches, teacher leaders, etc.



Eva Thanheiser

Board Member-At-Large
Portland State University

MEMBER-AT-LARGE

Liaison to Advocacy, Equity, & Research Division (AER)

In my role as an At-Large Board member, I attend the AMTE Board meetings and serve as the Board Liaison to the Advocacy, Equity, and Research (AER) Division. I also attend Division meetings to support the work of each committee. I work closely with VP and AVPs to plan initiatives to support the mission and strategic priorities of AMTE. Along with VP Sarah van Ingen Lauer, I update the Board on Division activities. For 2019, the VP, AVPs, and I have further refined the unique contributions of each committee. In my capacity as Board Liaison, I have continued to support and maintain equity as a priority within AMTE.



Christa Jackson

Board Member-At-Large
Iowa State University

MEMBER-AT-LARGE

Liaison to Professional Learning

As an At-Large Board member, I support the mission and strategic priorities of AMTE by serving as liaison to the Professional Learning Division. I participate in Division and Committee meetings to share updates from the Board, and to learn about and support the work of the committees within the division. Along with VP Lynn Breyfogle, I update the Board on Division activities and accomplishments, and provide guidance on Board initiatives and procedures within the Division. Some highlights of my work this year included the opportunity to work with the newly formed Conference Committee, as they secured sites for future conferences and developed procedures to ensure AMTE members have access to a strong set of learning opportunities at future conferences; and the opportunity to work with the Ad-Hoc Conference Committee as they provided recommendations on important conference-related issues.



Enrique Galindo

Board Member-At-Large
Indiana University

MEMBERSHIP



Maggie McGatha

Vice President for Membership
M² Consulting

The Membership Division consists of the Affiliates, Awards, and Membership committees and they have all been very busy this past year. The overall emphasis of the Membership Division is to support the AMTE membership! The three committees within the Division support the AMTE membership in different ways. The Affiliates Committee supports members in establishing and maintaining affiliate organizations to support mathematics teacher educators in their local area. The members of this committee each serve as a regional representative supporting the affiliates in their region. The Awards Committee supports members by recognizing outstanding members through the various AMTE awards. Please visit the awards page (<https://amte.net/about/awards>) and consider nominating your colleagues for one of AMTE's annual awards. The Membership Committee focuses on benefits and resources to support AMTE members. A new Membership Task Force was named this year, stay tuned to hear their recommendations. I would like to thank all committee members and Michelle Stephan (Affiliates AVP), Amanda Sawyer (Awards AVP) and Nicole Rigelman (Membership AVP) for their tireless work in making their respective committees successful.

AFFILIATES

Regular Accomplishments: In 2019, the ACC reminded affiliate presidents to pay dues and update their AMTE affiliate website. The ACC also maintained records of affiliate status, encouraging affiliates whose dues were in arrears to pay. The committee designed and facilitated the Affiliates Session at the annual meeting of the AMTE in Florida and hosted the annual affiliates breakfast. They also wrote and submitted a proposal for the 2019 annual meeting. Committee member and AVP, Michelle Stephan attended the NCTM Affiliate Conference in July.

New Accomplishments: The ACC held a Fall Regional Caucus with affiliates in each of the five Regions. The ACC also decided to continue with Fall Regional Caucuses rather than one ACC webinar. Additionally, they decided to hold Spring Regional Caucuses beginning in 2020. The rationale for caucusing was that each Region decides what issues are pertinent to the affiliates within their region and have smaller, more intense conversations. The ACC also developed an Affiliates Status Protocol that could be used to determine when an affiliate is in good standing or not as well as the protocol of action when an affiliate falls out of good status. The Protocol was presented by AVP Michelle Stephan at the November AMTE Board Meeting and it was approved to begin Spring 2020. It will be introduced at the ACC affiliates business meeting at the AMTE annual conference.



Michelle Stephan

Associate Vice-President
for Affiliates
*University of North Carolina -
Charlotte*

Affiliate Connections Committee

Jill Newton, Purdue University; Michelle Stephan, University of North Carolina Charlotte; Hartono Tjoe, Penn State; Dana Franz, Mississippi State; Torrey Kulow, Portland State University; Ziv Feldman, Boston University

MEMBERSHIP

The Membership Task Force charge was approved by the board this past spring. The members were appointed and began their work in September. With data from the redesigned conference registration and membership renewal forms, we examined current members' roles and interests and identified groups involved in mathematics teacher education but not yet represented in AMTE (i.e., individuals at two year colleges and those leading professional development efforts in schools and districts). As charged by the board, we have identified specific recommendations for broadening membership beyond IHE faculty to be more inclusive of both a research and practitioner focus.

The Task Force, in collaboration with VP of Professional Learning and AVP of Affiliates, is examining current member benefits attractive to diverse stakeholders. We are developing recommendations for additional focus and expansion of aspects of teacher professional learning and affiliate partnerships in light of expanded membership. Our hope is that we can perpetuate and sustain relationships with those new or inconsistently represented within the organization and by its activities.



Nicole Rigelman
Associate Vice-President
for Membership
Portland State University

AWARDS

In 2019, the AMTE Awards Committee was busy making many changes in policy. First, we helped to increase the number of candidates for the Early Career and Excellence Awards by initiating a Roll Over process. To ensure the quality of the candidate pool, we now allow candidates to roll over their nomination for three years. Beginning this year, nominators could select to have their candidates be considered for up to three years for each award (provided that the nominee is still eligible for the award). For early career nominations, this would allow every nominee up to three years total to possibly be awarded. Our committee voted to specify dates in the selection process of each award as follows:

Judith Jacobs Lecture:

- AVP will email past Judith Jacobs and Excellence Award recipients to solicit nominations by February 15
- Candidates for consideration will be collected from post-conference surveys and responses from the above described email
- AVP will provide board with 2-3 candidates for consideration and selection by March 30
- President of AMTE will notify the named JJ Lecturer of their selection by April 30

Excellence/ Early Career/ Mathematics Specialist Award:

- AVP will provide names of the selected recipients to the board by July 15
- President of AMTE will notify recipients by July 1
- AVP will send out rejection letters to the individuals nominating the candidates with the candidates for consideration copied on the email by July 1. Rejection letters will express that despite not receiving the award, they will be reconsidered during the next awards cycle (provided they are still eligible for the award and have not exceeded the 3-year maximum time limit).

Susan Gay Graduate Travel Award:

- AVP will provide names of the selected recipients to the board by September 15
- President of AMTE will notify recipients by September 30
- AVP will send out rejection letters other applicants by September 30

In the past year, the Awards Committee also increased how we advertised for our awards. Email reminders will be sent April 1, May 1, and June 1 for the Excellence Award, Early Career Award, and Elementary Mathematics Specialist Scholarship, also with posts on AMTE's Facebook page. Since Susan Gay Scholarship recipients are notified on September 1, email reminders will be sent about the scholarship award July 15 and August 15 with Facebook posts.

Finally, the Awards Committee had the privilege of selecting individuals for the various honors within the organization described above. We had a number of excellent candidates presented for each award and scholarship. This year we were reminded of the amazing individuals who support and extend the goals of the Association of Mathematics Teacher Educators.



Amanda Sawyer
Associate Vice-President
for Awards
James Madison University

Awards Committee

Pam Bailey, *Mary Baldwin University*; Kanita DuCloux, *Western Kentucky University*; Allyson Hallman-Thrasher, *Ohio University*; Amanda Sawyer, *James Madison University*; Todd Abel, *University of Central Arkansas*; Carrie Lee, *East Carolina University*

PROFESSIONAL LEARNING



Lynn Breyfogle

Vice President for Professional Learning
Bucknell University

Three years ago AMTE boldly restructured the Board and Committees to create the five divisions that now exist. The purpose of adding the Vice Presidents and organizing the committees within the divisions, was to increase the likelihood that committees could collaborate and do their work more effectively. As I complete my term as the first Vice President for the Professional Learning Division, I am happy to report that this structure is working well and I believe generating greater opportunities for our members. This year, the work was spearheaded by the Associate Vice Presidents of the Conference Committee (Trena Wilkerson), Program Committee (AnnaMarie Connor), Professional Development Committee (Sararose Lynch), STaR Fellows Program (Keith Leatham), and the Technology Committee (Amanda Thomas). Each of these committees supports the membership in different ways.

This year was a year of major transition as we moved from an individual Conference Director/Co-Director model to a Conference Committee. The Associate Vice President, Trena Wilkerson, and the incoming AVP Colleen Eddy, provided tremendous leadership for this Conference Committee. They have worked tirelessly to first understand all that needs to be done to organize a conference and then to lead a new committee to do so. We are fortunate that all of the Conference Committee members will serve a second year in 2020. This should provide for an excellent conference 2020 in Phoenix, and members should plan on attending the 25th Annual Conference February 11–13, 2021, in Orlando, FL! They are close to signing contracts for the conference sites in 2022 and 2023, so stay tuned!

The Professional Learning Division kicked off the year in 2019 hosting the largest AMTE Conference ever in Orlando, Florida with 690 paid registrations. Thank you to Susan Gay and Carol Lucas for their tremendous effort in making it such a successful Conference venue. This year's Program Committee led by AnnaMarie Conner was very hard at work planning another fantastic Annual Conference for 2020. Thank you to the more than 150 members (especially the 16 Program Committee members and more than 135 reviewers) who worked hard during the summer to review proposals and develop the excellent schedule of sessions offered at the 2020 Annual Conference in Phoenix, AZ.

It has been my great honor serving AMTE as the first Vice President for the Professional Learning Division and work with the amazing leadership team. I am excited to see the Professional Learning Division continue to flourish and develop new ways to support our members under the leadership of the new VP Jennifer Suh and continued Board Liaison, Enrique Galindo.

ANNUAL CONFERENCE

The 2020 Annual Conference will have one of the highest attendance rates in our history with more than 640 registered participants. The Conference Program Committee began to invite submissions for the 2020 Conference on April 20, 2019. To prepare, we considered feedback from the 2019 conference, reviewed and revised the Call for Proposals and Review Criteria, and worked with All Academic to establish the online submission website for the 2020 Conference. The Call for Proposals was released in March, while the Committee worked to vet the online system.

During the submission period from April 20 through May 15, 2019, the Committee monitored submissions to ensure that each proposal was properly blinded, of appropriate length, and ready for review. During our May 13 Program Committee meeting, each member was assigned a strand to guide through the review process. We discussed the process of assigning volunteers for reviews, ranking proposals, and making recommendations for acceptance.

In the next phase of our work, Committee members led 151 AMTE volunteers in conducting proposal reviews, and by July 15, each strand leader had submitted recommendations for the 2020 program. The Committee would like to thank all of the reviewers who submitted their reviews on time. Until speakers received invitations on August 15, Committee leaders proofed session titles and descriptions for proposals recommended for acceptance, and the program chair developed a preliminary schedule. The schedule was finalized in late October; between November and January, Committee leaders coordinated and finalized the program booklet, published the conference schedule online, and updated speakers on final conference preparations.



Trena Wilkerson

Associate Vice-President
for Conferences
Baylor University



AnnaMarie Conner

Associate Vice-President
for Annual Conference
Program (2020
Conference Program
Chair)
University of Georgia



Dana Cox

2019 Conference Program
Chair
Miami University



Rick Hudson

2021 Conference Program
Chair
University of Southern
Indiana

In total, 426 proposals were submitted for review and 263 of those proposals were accepted onto the program, which is comprised of

- 136 individual presentations, discussion and extended sessions, and symposia;
- 80 brief reports, organized into 34 thematic sessions;
- 23 posters;
- 10 invited presentations;
- 2 award-winner sessions; and
- 2 sessions presented by AMTE sponsors.

The acceptance rate of approximately 62% is in line with previous conferences. We are pleased with the quality and number of presentations on the program and look forward to the 2020 conference in Phoenix. The following table displays statistics from past AMTE annual conferences to put this year's conference into some organizational context. This year's program has 185 sessions and includes 435 speakers. This is the first time we will be meeting in Phoenix, and the relatively lower numbers in comparison to last year reflects fewer available rooms for presentations.

Year of Conference	Total Proposals Submitted	Accepted Proposals	Sessions on the Program	Presenters at Conference	Proposal Reviewers
2020	426	62.0%	185	435	151
2019	451	60.5%	217	493	160
2018	444	49.8%	166	445	137
2017	452	58.6%	201	494	142
2016	464	49.8%	190	483	141
2015	470	44.0%	197	463	161
2014	407	56.7%	205	429	134
2013	395	47.0%	196	385	217

Annual Conference Program Committee

AnnaMarie Conner, *University of Georgia*; Dana Cox, *Miami University*; Rick Hudson, *University of Southern Indiana*; Julie Amador, *University of Idaho*; Jennifer Eli, *University of Arizona*; Cathy Liebars, *The College of New Jersey*; Jane Wilburne, *The Pennsylvania State University*; Meghan Burton, *Auburn University*; Jeremy Zelkowski, *University of Alabama*; Tommy Hodges, *University of South Carolina*; Kelly Costner, *Winthrop University*; Carlos Nicolas Gomez, *Clemson University*; Shari Stockero, *Michigan Technological University*; Rebekah Elliott, *Oregon State University*; Mary Enderson, *Old Dominion University*

Conferences Committee and Leadership for the 2020 Conference:

Trena L. Wilkerson, *AVP Conferences, Baylor University*; Colleen Eddy, *Designee AVP Conferences, University of North Texas*;

Committee Members: Suzanne Harper, *Miami University*; Ray LaRochelle, *University of Delaware*; Lateefah Id-Deen, *Kenasaw State*; Julie James, *University of Mississippi*; Enrique Galindo, *Professional Learning, Board Member, Indiana University*; Tim Hendrix, *AMTE Executive Director, Meredith College*; Lynn Breyfogle, *VP Professional Learning, Bucknell University*

LOCAL ARRANGEMENTS COMMITTEE

The Local Arrangements Committee is formed each year to help welcome AMTE members to the Annual Conference, and assist with registration and audio-visual needs of the conference. It would not be possible to carry out our conference each year without the outstanding work of the local arrangement chairs and their committee of volunteers. Sarah Bush, Megan Nickels, and Farshid Safi were the AVPs for Local Arrangements for our 2019 conference in Orlando, FL. Mi Yeon Lee and Terri Kurz, have been working throughout 2019 as the AVPs for Local Arrangements for the 2020 Conference.

Local Arrangements Committee

Mi Yeon Lee, *Arizona State University*; Terri Kurz, *Arizona State University*; William DeLeeuw, *Arizona State University*; Kyeong Hah Roh, *Arizona State University*; Carla van de Sande, *Arizona State University*; Surani Joshua, *Arizona State University*; Aubrey Neihaus, *University of Arizona*



Mi Yeon Lee

Co-AVP for Local Arrangements
Arizona State University



Terri Kurz

Co-AVP for Local Arrangements
Arizona State University

PROFESSIONAL DEVELOPMENT

The Professional Development Committee provides on-going professional development through webinar offerings. After a successful implementation of the Manuscript Review Groups at the 2019 conference, the PD Committee further developed the initiative for the 2020 conference. We hope that the members appreciate the tireless volunteer work of the nearly 40 members of the committees of the Professional Learning Division.

During 2019, the AMTE Professional Development Committee worked to serve the AMTE membership in three specific areas. First, we organized and offered four webinars for the AMTE membership during the 2019 program year:

- Mediated Field Experiences
- Inviting Rough Draft Thinking to Humanize the Mathematics Classroom (Maryland Affiliate Co-Sponsored)
- Insights into the NAEP Mathematics Assessment Framework Public Draft (WestEd Co-Sponsored)
- Statistical Education of Teachers: Novel Curriculum Materials

We continued work towards further developing our conference Manuscript Review Group (MRG) initiative that premiered at the 2019 Annual AMTE Conference. The MRG, developed in partnership with the STaR Program, supports AMTE members who have not had the opportunity to participate in the STaR program by providing a safe and encouraging environment to receive feedback on a manuscript. During the 2020 conference there will be 15 MRGs. Each MRG will ideally consist of three members: one early career AMTE member, one mid-career AMTE member, and one experienced AMTE member. Each MRG will be officially tasked with reviewing one manuscript, submitted by the early career AMTE member. They will be given the option of reviewing other manuscripts from the other members of the MRG, but as a secondary focus. We are excited about this work and will strive to continue to improve these and other initiatives to better serve AMTE membership.

Professional Development for Members Committee

Sararose Lynch, *Westminster College*; Patrice Waller, *California State University Fullerton*; William DeLeeuw, *Arizona State University*; Elizabeth Hughes, *University of Northern Iowa*; Kristen Bieda, *Michigan State University*; Denise Chenoweth, *University of South Florida*



Sararose Lynch

Associate Vice-President for Professional Development
Westminster College

STAR FELLOWS PROGRAM

The STaR Program, led by Keith Leatham (AVP), supported new members in entering the Mathematics Teacher Education community through the STaR Program. The STaR Committee reviewed applications and extended invitations, then organized and ran the 10th annual STaR summer institute. An amazing group of 35 early career mathematics teacher educators spent the week in Park City, Utah learning, planning, networking, eating, and laughing.

STaR Program Committee

William Speer, *University of Nevada, Las Vegas*; Denise Spangler, *University of Georgia*; Greg Gierhart, *Murray State University*; Lara Dick, *Bucknell University*; Matt Campbell, *West Virginia University*; Lisa Poling, *Appalachian State University*



Keith Leatham

Associate Vice-President for STaR Fellows Program
Brigham Young University

TECHNOLOGY

The goals of the Technology Committee are to recommend strategies, policies, and activities related to increasing awareness and improving integration of technology in mathematics teacher education. This year, Amanda Thomas (AVP) continued the Tech Talk blog, and led the Technology Committee as they carried on their annual work of selecting the NTLI Award winner from a very competitive pool and planning a technology session for the 2020 conference.

Technology Committee

Pier Junor Clarke, *Georgia State University*; John Somers, *University of Indianapolis*; Amanda Thomas, *University of Nebraska*; Dawn Woods, *Southern Methodist University*; Michael Todd Edwards, *Miami University*



Amanda Thomas

Associate Vice-President for Technology
University of Nebraska - Lincoln

PUBLICATIONS



Babette Benken

Vice-President for Publications
Salisbury University

A general goal of this division is to provide quality publications to the membership that promote the goals of AMTE and to increase the visibility of our publications to a broader audience. The Publications Division consists of the three publications of AMTE, *Mathematics Teacher Educator (MTE)*, *Contemporary Issues in Technology and Teacher Education – Mathematics (CITE-Math)* and *Connections* (newsletter), along with our Publications Review Committee. Our journals publish quality manuscripts focused on the needs and interests of our membership. We provide a session at every AMTE Annual Conference to help authors learn about each publication and develop a manuscript for submission to our journals and/or newsletter. The editors are also willing to work with you prior to your submission to answer any questions you may have about the submission process and to provide some quick, initial feedback on your manuscript or idea. All of the editors and members of the respective editorial boards are a hardworking group of dedicated people. Information and links for each publication/committee are posted on our Publications page on the AMTE website.

The Publications Review Committee (PRC) was created in Fall 2016 to help facilitate a standard review process for proposals for other types of publications submitted to AMTE. The proposal form is on the Publications web page and includes the directions on how and what to submit. This form is for the publication of books, monographs, resources, etc. that the PRC will consider and is not for journal or newsletter submissions; those types of submissions will continue to go directly to the journals/newsletter and their respective guidelines should be followed. All recommendations made by the PRC will go directly to the AMTE Board for a final vote and approval. The VP of the Division is also the overarching Series Editor for the AMTE professional books and monographs, published by Information Age Publishing (IAP), George Johnson, President. This past year we accepted a proposal for a new book (Volume 4 in our AMTE Professional Book Series), which will be officially published the end of 2019, with distribution early 2020.

MATHEMATICS TEACHER EDUCATOR JOURNAL

Two issues of the *Mathematics Teacher Educator (MTE)* journal were published in 2019. The March issue included four articles that focused on the integration of mathematical modeling and social justice, intentional coaching and mentoring, supporting teachers' use of noticing and wondering language, and helping teachers conceptualize students' justifications and generalizations. The March editorial celebrates the successes of editors, Sandra Crespo and Kristen Bieda, as they concluded their four-year tenure. This editorial highlights the journal's accomplishments and outlines future directions. Four articles in the September issue were focused on preservice teachers' exploration of complex and contradictory conversations; instruction that makes use of student thinking and questioning; development of a coherent understanding of multiplication, division, and proportional relationships; and understanding of mathematical modeling. The September editorial welcomes new Editor, Karen Hollebrands, and new Co-editor, Valerie Faulkner. This editorial reflects on the unique identity of the journal and looks to leverage its online presence by providing mathematics teacher educators with opportunities to communicate, interact, and connect.

The *MTE* Editorial Board members continued work in a strategic planning exercise that resulted in two initiatives for improving opportunities for authors to disseminate their work and connecting research and practice through the journal. Podcasts with interviews related to articles began in January 2019 and this year, we surpassed 5000 downloads. A survey was disseminated to gather information about publishing in *MTE*. Those results were shared in the Fall 2019 issue of *Connections*. The board is working to utilize those findings to inform our strategic planning activities.

Thanks to the Editorial Panel members who will be finishing their terms of service before the May 2020 panel meeting: Theodore Chao and Jan Yow. Special thanks to Karen Hollebrands (Editor) and Valerie Faulkner (Associate Editor) for their outstanding leadership of the *MTE* journal, as well as Jan Yow (Associate Vice President) for her leadership of the Editorial Panel.



Karen Hollebrands
MTE Editor
North Carolina State
University



Valerie Faulkner
MTE Associate Editor
North Carolina State
University



Jan Yow
Associate Vice President
for MTE Journal
Michigan State University

MTE Journal Editorial Panel

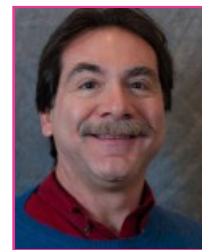
Jan Yow, *University of South Carolina*, Theodore Chao, *The Ohio State University*, Laura Bofferding, *Purdue University*, Keith Leatham, *Brigham Young University*, Zandra De Araujo, *University of Missouri*, Matthew Campbell, *W. Virginia University*

CONNECTIONS! NEWSLETTER

Connections published four issues in 2019: March (Spring), June (Summer), September (Fall), and December (Winter). These issues contained updates and solicitations for AMTE, as well as seven externally submitted articles, which underwent a blind review process by two members of the Editorial Panel. Some issues also contained paid advertisements. Thank you to Jonathan Bostic and Alyson Lischka, who will be leaving the Editorial Panel following the 2020 Annual Conference. Newly appointed Panel members include Greg Gierhart, Murray State University, Sheryl Stump, Ball State University, and Jenny Tsankova, Roger Williams University. Thank you to Babette Benken, Vice President for Publications, for continuing to provide support to the publication.

Connections! Newsletter Editorial Panel

Jonathan Bostic, *Bowling Green State University*; Alyson Lischka, *Middle Tennessee State University*; Susan Swars Auslander, *Georgia State University*; Rebecca Dibbs, *Texas A&M University-Commerce*; Ann Wallace, *James Madison University*



James Telese

Associate Vice-President for
Connections! Newsletter

*University of Texas Rio
Grande Valley*

CITE JOURNAL

In 2019, Co-Editors, Beth Bos and Shannon Driskell, met online regularly to assign reviewers to newly submitted manuscripts, discuss revisions, check timelines of manuscripts, and conduct other business related to CITE-Math (e.g., writing reports, corresponding with reviewers). During the 2019 calendar year, we received 15 submissions (5 more than in 2018); 3 of these manuscripts are currently being revised for resubmission, 6 are still under initial review, and 6 were rejected. In 2019, we published four manuscripts across the four issues. Additionally, in 2019, we continued to expand our pool of reviewers. We thank all of our reviewers for their service to the journal.

We thank Beth Bos for serving as Co-Editor for the last three years and welcome Ann Wheeler as new Co-Editor starting in February 2020 (although she has been shadowing with Shannon since August). This year we welcomed JoAnn Cady and Allison McCulloch to the Editorial Panel. The CITE-Math Editorial Panel met quarterly in 2019.



Beth Bos

Associate Vice-President for
CITE Journal
Texas State University



Shannon Driskell

Associate Vice-President for
CITE Journal
University of Dayton

To recruit high-quality manuscripts to CITE-Math, in 2018 a poster was created and used at mathematics education and technology conferences. The poster was displayed near the Exhibitions section during the AMTE 2019 Annual Conference and the business cards with QR codes were distributed to presenters and others to invite them to submit their work to CITE-Math. This helped the visibility of CITE-Math at the AMTE Annual Conference in 2019 (as well as 2018). Business cards with QR codes were also distributed at other various conferences (SITE, PMENA). When attending a session of a conference, we invited presenters to submit to CITE-Math if the topic was appropriate for CITE-Math. We worked at spreading the word that CITE-Math encourages practitioners and research related articles. One effort was the 2019 AMTE Publication Session in which CITE-Math Editorial Panel members worked with potential authors and provided feedback. At this year's 2020 AMTE Annual Conference, the Publication Session will again be a panel format in which editors from all of AMTE's publications will provide information about the publications and answer questions; following the panel, attendees will have an opportunity to meet in a small group with individual editors.

While we continue our regular work in the coming year, we will continue to work on increasing the visibility of CITE-Math and soliciting high-quality submissions to CITE-Math. We intend to continue to recruit potential authors from the SITE annual meeting (and other related professional organizations) as well as from the AMTE conference, focusing our attention on sessions that explore mathematics teacher education and the use of technology from new vantage points. We will continue to emphasize that CITE-Math is a publication that covers mathematics, technology, and teacher education. Papers should include all three concepts. We will also point out that CITE-Math is a home for articles that are for practitioner and research articles.

CITE Journal Editorial Panel

Ann Wheeler, *Texas Woman's University*; Patricia Moyer-Packenham, *Utah State University*; Chrystal Dean, *Appalachian State University*; JoAnn Cady, *University of Tennessee*; Allison McCulloch, *University of North Carolina*

PUBLICATIONS REVIEW

The Publications Review Committee (PRC) received a book proposal that was reviewed in 2018. Three committee members and one outside reviewer conducted the review using the guiding questions that are on the Publications website and are part of the proposal application (e.g., *Do the individuals on the proposal have the necessary qualifications and experiences to ensure a quality book? To what degree and in what way(s) does this proposed book directly relate to the mission of AMTE and meet a critical member need? What are the strengths of the proposed book?*). Babette Benken, Vice President for Publications, worked with the proposed Co-Editors to come to a consensus regarding the book, which was ultimately supported for publication (final vote from AMTE Board). This book will be published the end of this year, 2019, and will be released from the publisher in early spring of 2020.

The PRC also worked in 2019 to finalize the new supplementary materials for the AMTE Standards, as well as support the materials being ready and sent to AMTE for upload to the Standards website. All four sets of materials are available online for AMTE members.

The PRC welcomed two new Editorial Panel Members this past year: Jennifer Fillingim and Ryan Higgins. We greatly thank Óscar Chávez and LouAnn Lovin, who will be leaving the Panel after the AMTE 2019 Annual Conference, for their service. Additionally, we thank LouAnn Lovin for her two years of service in the role of Associate Vice President.

Publications Review Committee

LouAnn Lovin, *James Madison University*, Óscar Chávez, *The University of Texas at San Antonio*, Drew Polly, *University of North Carolina at Charlotte*, Belinda Edwards, *Kennesaw State University*, Jennifer Fillingim, *Madison Public Schools*, Ryan Higgins, *Coker College*



LouAnn Lovin

Associate Vice-President for
Publications Review

James Madison University

ADVOCACY, EQUITY, & RESEARCH



Sarah van Ingen Lauer

Vice President for Advocacy, Equity,
& Research

University of South Florida

In 2019, the discussions of the leadership team for the Advocacy, Equity, and Research Division were focused on leveraging the synergy among our three committees to advance AMTE's Strategic Priority #1 (Recognize and address inequities and build toward equitable practices) and Strategic Priority #2 (Engage a broader constituency). Whereas each committee has been engaged in its independent work, our three committees also collaborated together to create the inaugural AER Conference Fellowship. This fellowship provided complementary registration for two community college mathematics teacher educators and two K-12 school district-based mathematics teacher educators to attend the 2020 AMTE Annual Conference. This initiative was specifically designed to advance both strategic priorities, and we were thrilled to be able to bring new colleagues to the annual conference.

I would like to publicly thank each of the Associate Vice Presidents—Zandra De Araujo, Carlos Lopez Leiva, and Meghan Shaughnessy, for their innovative and bold leadership in each of their respective committees

ADVOCACY

The Emerging Issues Committee (EIC) completed several projects this year. It developed a document that defines an emerging issue and how the committee might respond to it. In addition to using this document to guide their own work, the committee has posted this document to the AMTE website as part of an invitation for AMTE members to submit potential emerging issues to the committee. The committee reviewed advocacy resources developed by other organizations and has posted a summary of these resources and links to them on the EIC site. The EIC also developed a survey for state affiliates to get a sense of the issues with which they are dealing. Responses to this survey will enable the committee to determine whether/what "state-level" issues are common and might be addressed by the organization. Finally, the EIC organized the annual conference Advocacy Breakfast that will feature speakers who engage in advocacy at a variety of levels. They also organized a follow-up session to provide a forum for participants to further engage with these speakers.



Zandra de Araujo

Associate Vice-President
for Advocacy

University of Missouri

Emerging Issues Committee

Kevin McLeod, *University of Wisconsin-Milwaukee*; Cory A. Bennett, *Idaho State University*; Christopher Jett, *University of West Georgia*; Zandra de Araujo, *University of Missouri*; Kristin Lesseig, *Washington State University Vancouver*; Robert Wieman, *Rowan University*; Jennifer Suh, *George Mason University*

EQUITY

Integrated by the following faculty and AMTE members, Kathy Stoehr, Belinda Edwards, Nicole M. Joseph, Maria Zavala, Anthony Fernandes, and Carlos López Leiva, this year the Equity Committee worked on addressing the multiple perspectives on equity of the AMTE membership and how these perspectives coincide with the AMTE Equity Statement. For this goal, the Equity Committee developed three initiatives: (a) a survey to asking AMTE members to share their definitions, perceptions, and practices of equity in Mathematics Teacher Education; (b) coordinated the development and implementation of a session during the AMTE annual meeting to share survey results and promote greater reflections on Equity and Mathematics; (c) coordinated the development of a practitioner-oriented session with practical and clear examples of Equity-oriented mathematics content teaching practices. These three initiatives will serve as a platform to grow the work of the committee during the following year.

Plans for the upcoming year is developing a manuscript on the analysis and discussions of the findings, as well as to suggest possible actionable steps. Main ideas gathered in both sessions during the annual conference will be shared through the AMTE newsletter. Coordination with work with other AMTE committees will be fostered to support the goals and suggestions derived from the Equity Committee's inquiry process on multiple perspectives on Equity in Mathematics Teacher Education and the relevance of AMTE's role on this endeavor.

Equity Committee

Anthony Fernandes, *University of North Carolina at Charlotte*; Marta Civil, *University of Arizona*; Kathleen Stoehr, *Santa Clara University*; Carlos López Leiva, *University of New Mexico*; Maria Zavala, *San Francisco State University*; Belinda Edwards, *Kennesaw State University*



Carlos López Leiva

Associate Vice-President
for Equity

University of New Mexico

RESEARCH

The Research Committee spent a significant amount of time conceptualizing a series of articles for the Connections Newsletter that focus on linking research and practice. We will be writing a series of articles that focus on how members of our field have developed lines of work that contribute to research and practice. Interviews with AMTE members will surface the challenges that arose in this work, and approaches for managing those challenges. We anticipate that the first article will be published in the spring newsletter. The Research Committee welcomed two new members this year: Melissa Boston and Chandra Orrill. We thank Blake Peterson and Ruthmae Sears, who will be leaving the Research Committee following the 2020 Annual Conference, for their service to the committee. Newly appointed Research Committee members are Leslie Dietiker and Mary Raygoza.

Research Committee

Ruthmae Sears, *University of South Florida*; Blake Peterson, *Brigham Young University*; Meghan Shaughnessy, *University of Michigan*; Yi-Yin (Winnie) Ko, *Indiana State University*; Chandra Orrill, *University Massachusetts Dartmouth*; Melissa Boston, *Duquesne University*



Meghan Shaughnessy

Associate Vice-President for
Research

University of Michigan

COMMUNICATIONS & OUTREACH



Dusty Jones

Vice President for Communications
& Outreach

Sam Houston State University

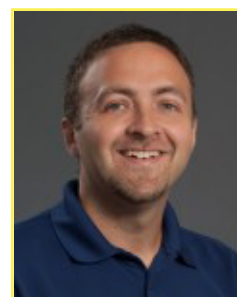
The Communications & Outreach Division facilitates AMTE's efforts to communicate information and resources to its members, sponsors, and donors. This Division encompasses all marketing, media, and sponsorship-related activities of the organization. Currently, particular efforts focus on AMTE's online presence, sponsorship campaigns and opportunities, and marketing the brand of AMTE in the public arena.

In the past year, major efforts in this division have included efforts to broaden participation in AMTE. Toward this end, work in 2020 will continue with a new podcast for those who prepare and develop mathematics teachers, and developing strategies and best practices for social media.

I want to publicly thank each of the Associate Vice Presidents – Joel Amidon, Damon Bahr, Joe Champion, and Denise Spangler – for their outstanding service to AMTE and its members. Each of these people fulfilled the final year in this role in 2019, and they finished strong.

WEB DEVELOPMENT

AMTE.net continues robust website traffic and content development, with 3,000 pages of website content, 4,000 professional contacts, and 168,000 unique page views during 2019. Our website and social media support nearly all the work of the organization through dissemination and help connect mathematics teacher educators to resources, publications, news, and organizational developments. The website continues to host webinars, Connections, and links to other AMTE publications, as well as a thriving job-listings page, the AMTE Standards for Preparing Teachers of Mathematics in both PDF and e-book formats, nominations and elections, awards, and STaR program systems, and the annual conference program (also as a mobile app). Behind-the-scenes software and server updates support a fast, secure, and stable system for data management and reporting and provide a strong footing for development. Goals for the upcoming year include transitioning to third-party website development support and improved social media engagement.



Joe Champion

Associate Vice-President
for Web Development

Boise State University

SPONSORSHIP

The function of the AVP for Sponsorship is to connect with and coordinate existing sponsors and conference exhibitors. This means I sort of serve as a “air traffic controller” as I engage in conversations with them about some of the details regarding their sponsorship/exhibit and then send their information on to others in AMTE leadership to handle other details – finances, conference arrangements, mailing lists, etc. We have a few consistent sponsors and exhibitors, then a revolving door through which new entities begin supporting AMTE and others resign or come and go. There are a great deal of details associated with this element of AMTE and I am very thankful for the team with whom I work to accomplish it.

I have made efforts to acquire additional sponsors and conference exhibitors but with no success. This is an area the new Associate Vice President for Sponsorship could endeavor to develop more fully.

Exhibitors for the 2020 conference are as follows:

National Council of Teachers of Mathematics, National Council of Supervisors of Mathematics, Math Learning Center, College Preparatory Mathematics (CPM), Great Minds, Information Age Publishing

Some of the conference exhibitors are also sponsors. Stenhouse is also a current sponsor, but is not exhibiting at the 2020 conference.



Damon Bahr

Associate Vice-President
for Sponsorship
Brigham Young University

MARKETING

In 2019, work was done to further establish AMTE as the organization mathematics teacher educators look to for guidance on how best to prepare and develop mathematics teachers. These efforts helped to establish on-ramps for those new to AMTE, or new to the preparation and development of mathematics teachers, to become acquainted with who we are and what we do to help those who prepare teachers of mathematics. For those already within the AMTE organization, we are in the process for creating ways to share expertise with those first engaging with the organization.



Joel Amidon

Associate Vice-President
for Marketing
University of Mississippi

STaR FUNDRAISING

With tremendous support from the AMTE Treasurer, we were able to compile a list of all donors and developed a process for regular communication between the Treasurer and the Committee Chair. Committee members sent over 230 individual thank-you letters to people and organizations that have supported the STaR program financially since 2015. Last year, over \$52,000 was raised to support the program, which is approximately the cost of the annual program. The program currently has a balance of approximately \$40,000.

STaR Fundraising Committee

William Speer, *University of Nevada, Las Vegas*; Denise Spangler, *University of Georgia*; Greg Gierhart, *Murray State University*; Lara Dick, *Bucknell University*; Matt Campbell, *West Virginia University*; Lisa Poling, *Appalachian State University*



Denise Spangler

Associate Vice-President
for STaR Fundraising
University of Georgia

2019

**Denise A. Spangler**

University of Georgia

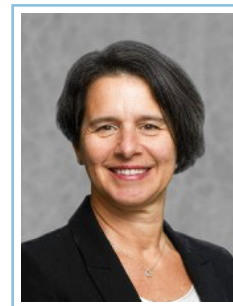
Presentation: Fundamental Commitments of My Work as a Mathematics Teacher Educator

JUDITH JACOBS LECTURER

Recognizes a distinguished mathematics teacher educator with an opportunity to challenge her or his colleagues on a topic of his or her choice in a plenary session at the Annual AMTE Conference.

The Judith Jacobs Lecture was established in 2003 to honor Dr. Judith E. Jacobs, one of the founding members of AMTE. Dr. Jacobs was instrumental in developing AMTE into a national organization and in the development of the AMTE conference with its current structure and emphasis on interaction. Judith Jacobs is an active member who served as the treasurer, the president, and as the first executive director. The Judith Jacobs Lecture was established after her tenure as executive director.

2020

**Paola Sztajn**

North Carolina State University

Presentation: Research and Mathematics Teacher Education: Triumphs, Trials, and Transitions

2019

**Samuel Otten**

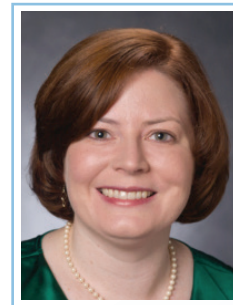
University of Missouri

AMTE NADINE BEZUK EXCELLENCE IN LEADERSHIP AND SERVICE AWARD

EXCELLENCE AWARDS

In 2006, the AMTE Board of Directors established the AMTE Excellence in Mathematics Teacher Education Awards, to be presented each year at the Annual Conference on a three-year rotating basis: The Excellence in Teaching Award, the Nadine Bezuk Excellence in Leadership and Service Award, and the Excellence in Scholarship Award. The Excellence Awards recognize annually a colleague for unique contributions that have made a significant and lasting impact in mathematics teacher education. The first Excellence in Teaching Award was given in 2006, the first Excellence in Leadership and Service Award was given in 2007, and the first Excellence in Scholarship Award was made in 2008.

2020

**AnnaMarie Conner**

University of Georgia

AMTE EXCELLENCE IN SCHOLARSHIP AWARD

2019

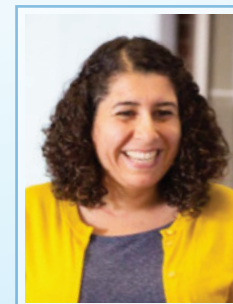
**Christopher C. Jett**

University of West Georgia

AMTE EARLY CAREER AWARD

Since 2009, the AMTE Early Career Award recognizes a mathematics teacher educator who, while early in her or his career, has made distinguished contributions and shows exceptional potential for leadership in one or more areas of teaching, service, scholarship, or both.

2020

**Zandra de Araujo**

University of Missouri

NATIONAL TECHNOLOGY LEADERSHIP INITIATIVE FELLOWSHIPS

Since 2000, the Society for Information Technology and Teacher Education (SITE) has collaborated with four teacher education associations representing the content areas of mathematics, science, English & language arts, and social studies education through the National Technology Leadership Initiative (NTLI). The NTLI fellowships were established to recognize exemplary presentations related to integration of technology in core content areas at the annual meetings of each participating association; in mathematics, that fellowship has been recognized at the AMTE Annual Conference.

AMTE identifies the recipient(s) of its NTLI fellowship through a competitive process that includes the submission of a paper in advance of the conference. The recipient of the award receives travel funding (\$1200, made possible by a donation by Texas Instruments) to participate and make a presentation at the SITE Annual Conference. The paper is forwarded and recommended for publication in the CITE journal by the AMTE Technology committee after additional review.

2019



Kelley Buchheister

University of Nebraska-Lincoln

Manuscript: A Program for Success

2020



Frances K. Harper

University of Tennessee



Zachary Stumbo

University of Tennessee



Nicholas Kim

University of Tennessee

Manuscript: When Robots Invade the Neighborhood:
Learning to Teach PK-5 Mathematics Leveraging Both
Technology and Community Knowledge

MATHEMATICS TEACHER EDUCATOR OUTSTANDING REVIEWER AWARD

In 2017, at the request of the MTE Journal Editorial Panel, the AMTE Board of Directors established the *Mathematics Teacher Educator* (MTE) Outstanding Reviewer Award, to be presented each year at the Annual Conference. The purpose of the *Mathematics Teacher Educator* Outstanding Reviewer Award is to recognize a colleague who, through their service as a reviewer for *Mathematics Teacher Educator* journal, provided exemplary reviews of the highest quality and value for editorial review of submitted scholarly manuscripts.

2019



Amy Roth McDuffie

Washington State University



Shari Stockero

Michigan Technological
University

2020



Alyson Lischka

Middle Tennessee State
University

SUSAN GAY GRADUATE STUDENT CONFERENCE TRAVEL SCHOLARSHIP

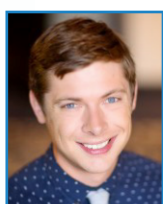
The Susan Gay Graduate Student Conference Travel Scholarship was established to provide financial support to graduate students to attend the AMTE Annual Conference. Awarded since 2012, this scholarship is named after Susan Gay in honor of her extraordinary service to AMTE over many years as conference director, president, secretary, and board member-at-large. Each year up to four graduate students receive the award, which covers the cost of graduate student early registration and an additional \$400 to offset the cost of attending the conference. To qualify for the scholarship, one must be a doctoral student making progress toward completion of a degree.

2019



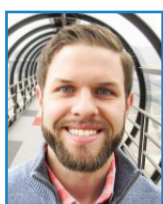
Kathryn Early

Auburn University



Foster Graif

University of Minnesota



Andrew Gatza

*Indiana University-Purdue
University, Indianapolis*



Amanda Reinsburrow

Drexel University

2020



Tye Campbell

University of Arizona



**Katrina Stullken
Rothrock**

University of Kansas



Nina Gabrielle Bailey

University of North Carolina-Charlotte

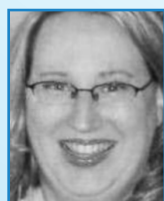


Angela Google

Middle Tennessee State University

ELEMENTARY MATHEMATICS SPECIALIST SCHOLARSHIP

2019



Rachel Barrong Aazzerah

Portland, Oregon



MaryBeth Bates

Bennington, Nebraska



Stephanie Casasanta

Orange, Virginia

The AMTE Elementary Mathematics Specialist Scholarship program provides support to classroom teachers in their development as elementary mathematics specialists. Elementary mathematics specialists work as teachers, teacher leaders, or coaches and they support effective mathematics instruction and student learning at the classroom, school, district, or state levels. The EMS Scholarships are funded through the generosity of AMTE sponsor, the Math Learning Center (www.mathlearningcenter.org/). Each recipient of the scholarship receives funding of \$2000 to help support their coursework towards an elementary mathematics specialist certificate or recognized endorsement.

AMTE HEADQUARTERS

Executive Director (Governance, CFO, COO)

Financial Services Manager
Mary Beth Wallace

Tim Hendrix
Term: 2014 - 2020

Shari Stockero (Designee)
Term: 2019 - 2020

Admin / Graphic Design
Tony Nguyen

Associate Vice-President
for Constitutions and
By-Laws
*Constitutions and By-Laws
Connections Committee*

Megan Burton

Associate Vice-President
for Nominations and
Elections
*Nominations and Elections
Committee*

Toya Frank

Finance Committee Chair

Finance Committee

Sarah Quebec Fuentes

ELECTED MEMBERS OF THE BOARD

(Elected Board members serve as liaisons to the various divisions.)

President

Michael Steele
Term: 2019-2021

Immediate Past President

Randy Philipp
Term: 2019-2020

Secretary

Sandi Cooper
Term: 2017-2020

At-Large

Enrique Galindo
Term: 2019 - 2022

At-Large

Eva Thanheiser
Term: 2017 - 2020

At-Large

Christa Jackson
Term: 2018 - 2021

Treasurer

Sarah Quebec Fuentes
Term: 2019 - 2022

Membership Division

Vice-President for Membership

Maggie McGatha
Appointed to 2020

Associate Vice-President
for Affiliates
*Affiliate Connections
Committee*

Michelle Stephan

Associate Vice-President
for Membership

Nicole Rigelman

Associate Vice-President
for Awards

Awards Committee
Amanda Sawyer

Professional Learning Division

Vice-President for Professional Learning

Lynn Breyfogle
Appointed to 2020

Associate Vice-President
for Conferences
Conference Leadership Team
Trena Wilkerson

Associate Vice-President
for Annual
Conference Program
Conference Program Committee

Anna Marie Conner (2020)
Dana Cox (2019)
Rick Hudson (2021)

Associate Vice-Presidents
for Local Arrangements
Local Arrangement Committee

Mi Yeon Lee
Terri Kurz

Associate Vice-President
for Professional Development
*Professional Development
for Members Committee*
Sarasore Lynch

Associate Vice-President
for STaR Fellows Program
STaR Program Committee
Keith Leatham

Associate Vice-President
for Technology
Technology Committee
Amanda Thomas

Publications Division

Vice-President for Publications

Babette Benken
Appointed to 2021

Associate Vice-President
for MTE Journal
(Editorial Panel Chair)
MTE Journal Editorial Panel

Jan Yow

Associate Vice-President
for Connections!
Newsletter (Editor)
*Connections! Newsletter
Editorial Panel*

James Telese

Associate Vice-Presidents
for CITE Journal
(Co-Editors)

Beth Bos
Shannon Driskell

Associate Vice President
for Publications Review
Publications Review Committee

LouAnn Lovin

Advocacy, Equity, & Research Division

Vice-President for Advocacy, Equity, & Research

Sarah van Ingen Lauer
Appointed to 2019

Associate Vice-President
for Advocacy
Emerging Issues Committee

Zandra de Araujo

Associate Vice-President
for Equity
Equity Committee

Carlos López Leiva

Associate Vice-President
for Research
Research Committee

Meghan Shaughnessy

Communications & Outreach Division

Vice-President for Communications & Outreach

Dusty Jones
Appointed to 2022

Associate Vice-President
for Web Development
Joe Champion

Associate Vice-President
for Sponsorship
Damon Bahr

Associate Vice-President
for Marketing
Joel Amidon

Associate Vice-President
for STaR Fundraising
STaR Fundraising Committee

Denise Spangler

