



Annual Report 2021





TABLE OF CONTENTS

President	1
Past President	3
Executive Director.....	6
Nominations and Elections.....	8
Constitution and Bylaws.....	9
Treasurer	9
Finance Committee	10
Secretary	12
Contractors	12
Members-at-Large	13
Membership Division	15
Affiliates	15
Awards.....	16
Membership	17
Professional Learning Division	18
Conferences Committee	18
Program Committee	19
Professional Development.....	20
STaR Fellows Program.....	22
Technology Committee	23
Local Arrangements	23
Publications Division.....	24
Mathematics Teacher Educator Journal	25
<i>Connections!</i> Newsletter	27
CITE-Math Journal	28
Publications Review	29





Advocacy, Equity and Research Division	30
Advocacy Committee	30
Equity Committee	31
Research Committee	33
Communications & Outreach Division	34
Communications	34
Sponsorship.....	35
Marketing	36
STaR Fundraising	36
Awards	
Judith E. Jacobs Lecture	37
Excellence Awards	38
AMTE Early Career Award.....	39
National Technology Leadership Initiative Fellowships	39
Mathematics Teacher Educator Outstanding Reviewer Award	40
2022 Susan Gay Travel Scholarships	40
2021 Susan Gay Travel Scholarships	41
Elementary Mathematics Specialist Scholarship.....	42
Organizational Chart	43

President

Megan Burton
President
Auburn University



Welcome to the 2021 Association of Mathematics Teacher Educators' Annual Report. The goal of this report is to better inform you, our membership, about the volunteer work of the Board of Directors and our many committee members. I hope you will review this report and consider ways you can engage in the AMTE mission of supporting mathematics teacher education and mathematics teacher educators.

The Role of President in 2021

I want to share some about my work this year to provide windows into the efforts made to support MTEs and enhance the visibility and impact of AMTE. These experiences have been extremely rewarding. Below are some examples of the work done.

- Attended the meetings of the Conference Board of the Mathematical Sciences, along with subgroups related to data science and diversity, equity and inclusion. We approved a CBMS joint statement on diversity, equity and inclusion this year.
- Met regularly with sibling organization leaders such as NCTM, TODOS, ASSM, ASTE, NCSM, and AMATYC to discuss collaborations and needs of members.
- Met weekly with the Past President and Executive Director to discuss AMTE activities.
- Represented AMTE at School Science and Mathematics Annual (SSMA) Conference, the American Mathematical Association of Two-Year Colleges Annual (AMATYC) Conference, and various affiliate meetings.
- Planned and facilitated monthly board meetings, the fall board retreat, and the winter planning day before the annual conference.
- Attended the Finance Committee and STaR meetings.
- Welcomed members to webinars, a Community Conversation on Critical Race Theory, STaR, leadership roles/committees, and each issue of Connections.
- Submitted an application for SEA STEMME Grant for Professional Societies to conduct self-assessment and action planning. While we did not receive the grant, we are using the feedback to help as we continue this area of focus.



Impacting Work During Changing Times

Last year's annual report was shared via our first virtual conference and is a reminder of the challenging experiences we all dealt with over the past two years. This year, I am thankful we are meeting in person and we are utilizing the lessons learned to forward mathematics teacher education. Supporting Get the Facts Out, promoting Community Conversations and Community Circles and hosting our first Presidential Reception for Faculty of Color are just a sample of efforts being made to support our members and the long term goals of the organization. We invite members to reach out with suggestions and ideas, and to volunteer their time to increase the support AMTE provides to membership.

I want to thank Mike Steele for his mentorship and leadership over the past few years and welcome Enrique Galindo as our President-elect. In addition, this organization would not function without the dedication and service of our Executive Director, Shari Stockero. The AMTE board, Associate Vice Presidents, Committee Members, and countless volunteers are what make AMTE the great organization that it is. As we continue the work to elevate, empower and meet the mission of AMTE, I am thankful for the opportunity to serve with an amazing team that that listens to each other, challenges each other, and strives to serve. I look forward to serving and learning with you in the coming year.

Listening and Learning,
Megan Burton
President

Past President

Michael D. Steele


Past President
National Science Foundation



The AMTE Immediate Past President serves on the AMTE Board of Directors and on the executive council along with the President and Executive Director. This past year, it has been my pleasure to continue to have an active role in the leadership and direction of AMTE through weekly calls with President Megan Burton and Executive Director Shari Stockero and monthly work with the AMTE Board. The Immediate Past President also serves as the board liaison to the Nominations and Elections Committee and I was also asked this year to lead the organization of the 2022 Annual Conference opening session.

While organizations elect a President as a singular and visible leader of an organization, one important thing I have learned during my time on the AMTE Board of Directors is that strong organizations support leaders in making organizational decisions, organizing activities, and charting a future vision and direction. AMTE's Executive Leadership and Board of Directors are one of the most collaborative, thoughtful, and supportive bodies for which I've had the pleasure of serving. Over the past year in particular, leadership has made challenging decisions related to the pandemic, ways to support members in a challenging mathematics teacher education environment, partnerships with sibling organizations, and examining our own structures and systems to address inequities.

In reflecting on my board service since 2016, and in particular my four-year term in the presidential rotation of roles, I'd like to highlight a number of important successes and some areas for continued growth of our organization. AMTE has worked systematically over the past several years to expand our reach and develop future leaders, both within AMTE and more broadly within the mathematics teacher education community. Beginning with the restructuring efforts implemented in 2017, the organization has expanded opportunities for mathematics teacher educators to volunteer, be engaged, and make meaningful change in our field. We have increased our national profile through our own advocacy efforts; collaborations with our sibling organizations such as NCTM, NCSM, and ASSM; and in promoting additional attention to issues of mathematics education and mathematics teacher education in national organizations such as the Conference Board for Mathematical Sciences, the Get the Facts Out initiative, and the Dana Center Launch Years Leadership Network. Through these efforts and engagements, we have taken an active role in advocating for mathematics teacher education and for the strengthening of both the mathematics teacher and mathematics teacher educator professions. This year in particular, the work of the Get the Facts Out team and my engagement




I am also heartened to see the success, expansion, and evolution of our leadership development efforts. During my time as President, we welcomed our 10th, 11th, and 12th cohorts of STaR fellows, AMTE's signature early-career faculty development program. As I look across our lists of committee members, Associate Vice Presidents, Vice Presidents, Board Members, and Award Winners, it is like gazing into the night sky on a clear night - STaRs abound! Just as importantly, our STaR fellows are well represented in the field through conference presentations, journal articles, research grants, and leadership in other mathematics education organizations. Having had the opportunity to work with the STaR team during my term, I commend the thoughtful work that the team has done to design meaningful programming, support community building, and seek a wide and diverse range of STaR fellows to be a part of the program. In an era in which institutional support for faculty is constrained, the generative nature of STaR has the potential to sustain and nourish early-career faculty beyond the bounds of the week-long summer convenings.

I am also proud of our efforts in attending to equity, diversity, and inclusion, while recognizing that we still have a long journey ahead. As I look over the ways in which AMTE has attended to equity, diversity, and inclusion over the past four years, I note an important evolution. The organization has centered equity in a number of ways (most notably with the foci of our opening conference sessions) and simultaneously infused equity more deeply into the everyday work across our organization. Diversity, equity, and inclusion is not a standalone idea or one that requires time-limited attention, and I see our organization as taking seriously the notion that these issues touch every aspect of our work. For example, the Community Circles structures launched at the 2021 Annual Meeting provide important dedicated spaces for a variety of groups to discuss issues important to them. Our Membership division, acting on the 2019 report from the Membership Task Force, has mobilized efforts to broaden our AMTE constituency to better represent the full mathematics teacher education community.

With all this said, AMTE has a number of challenges that lie ahead. Building on the idea of diversity, equity, and inclusion, our organization still has a road to travel to better represent the landscape of our mathematics teacher education community. This includes a careful and thoughtful look about whose work we elevate through our conference presentations, journal publications, and leadership roles. I am both extremely proud of the ways in which AMTE leadership over the years has reflected the diversity of our membership while simultaneously recognizing that we can and should do even better in this regard. This work demands that AMTE continue to examine our systems, processes, and procedures and revise them where we find inequitable practices.

AMTE also needs to continue to expand our advocacy efforts. The pandemic has taken a massive toll on mathematics teaching and mathematics teacher education and one that we are still working to understand. Additionally, disinformation and



political agendas have eroded the public trust in science, STEM, and education. AMTE must collaborate with our mathematics education partners to take an active and meaningful role in advocating for education, mathematics education, and mathematics teacher education.

Finally, AMTE does so very much with very few resources. With the exception of an embarrassingly small subsidy for the work of the Executive Director, AMTE's work is entirely volunteer. As we continue to grow our organization and its work, we must consider ways in which we can make the work sustainable for future leaders while being attentive to the financial burdens and constraints on our members. Our work transitioning the 2021 conference to a virtual format was instrumental in providing affordable access to a wider variety of mathematics teacher educators. While we are pleased to welcome a return to an in-person conference in 2022, this contrast has once again reified some of the systemic inequities embedded in our structures and systems.

It has been an honor to have been trusted with serving as AMTE's 15th President. Almost since my very first Annual Conference, AMTE has been my professional family, providing me with a critical place to share my work and engage with others who are passionate about mathematics teacher education. Through my service to AMTE, I have made lifelong friends, learned and grown in my own leadership, and have had the opportunity to learn from so many members of our community. I'm looking forward to seeing many of you and thanking you personally for the opportunity at our 2022 Annual Conference.

This year in particular, the work of the Get the Facts Out team and my engagement with the Launch Years Leadership Network has provided the opportunity for AMTE to contribute to policy and practice at the national, state, and local level specifically related to modernizing mathematics in high school and early college and considering how best to prepare current and future teachers of mathematics to teach a true 21st-century mathematics curriculum.

Yours in service,
Mike Steele

Executive Director

Shari Stockero

Executive Director

Michigan Technological University




My primary role as the Executive Director of AMTE is to support the entire AMTE leadership—President, VPs, AVPs, committees and Board of Directors—in carrying out their work. In this role, I am fortunate to interact with many outstanding colleagues whose collective activity makes our organization what it is.

You may recall that in 2020, the AMTE board developed a set of long-term goals that would guide our work over the next several years and be a tool to keep our efforts focused on the issues that were identified as important to our members. In 2021, AMTE leadership, divisions and committees have begun taking actions to make progress towards these goals. This work has included an important transition in the work of the AMTE divisions—a transition from individual committees and divisions taking on projects to more cross-divisional work. This was always a goal with the AMTE restructuring and it has been fantastic to see this type of work increasingly taking place. As a result of the many new programs and cross-divisional work that is occurring within AMTE—including Community Circles, Community Conversations, mentoring (soon to come) and new resources on the AMTE website—one thing that has become clear to me this year has been the importance of keeping an eye on the “big picture” of the work of the organization to make sure that individual projects are coordinated and communicated. This has become a larger focus of my work over the past year and it has been a pleasure to support the work of so many AMTE members who have given their time and talents to expand the ways that AMTE is serving its members.

Two programs that have been particularly great to work with this year are STaR and Get the Facts Out. I was once again fortunate to be able to participate in the STaR Institute that took place virtually in 2021. It is energizing to meet some of our newest math teacher education colleagues and learn about the exciting research and scholarship that they are engaged in. We look forward to meeting with both the 2020 and 2021 STaR Fellows at this year’s conference and having in-person institutes for the 2021 and 2022 cohorts in Park City next summer.

I have continued to work with the AMTE Get the Facts Out task force, which has done outstanding work this year on behalf of our organization to help faculty promote the teaching profession. This task force is chaired by Jean Lee and includes members Tim Hendrix, Gary Martin, Amy Roth-McDuffie and Glenn Waddell. I have been impressed with their enthusiasm and their efforts to revise the GFO materials to make them math-specific and include an equity and diversity focus. They have made



numerous presentations to groups that include the AMTE members and affiliates. In 2022, the task force plans to begin in-person GFO sessions to introduce the GFO resources to a broader audience. If you haven't already, check out the GFO website or reach out to any member of the task force to find out how you can become a GFO Champion.

I am incredibly grateful that I have been able to work alongside President Megan Burton and Past-president Mike Steele to lead our organization. They have both become great confidants and friends as we have navigated numerous situations together. Even when difficult situations need to be navigated, it is always assuring that I can bounce ideas off of colleagues who care as much about AMTE and mathematics teacher education as I do.

I want to be sure to thank all of the AMTE members who have supported the work of the organization in a variety of ways over the last year. I certainly cannot mention everyone, but it's important that members recognize that there are numerous individuals who are constantly working behind the scenes to carry out our organization's work. In fact, you may be surprised to learn that over 140 AMTE members serve in some role within our organization. Every time you see an online event, new materials on our website, a new publication being released, an award given, or even the election taking place, know that this is the result of many hours of work by our committees and leadership. Not to mention the countless hours spent by our Conferences Committee and Annual Conference Program Committee preparing for the 2022 conference! It is truly the many member volunteers who make AMTE the great organization that it is. I encourage all of our members to consider how you might support the work of our organization. We are always looking for volunteers.

It has been my privilege to serve AMTE in 2021 and I look forward to seeing what's to come in 2022. Please take some time to read the 2021 Annual Report to learn more about all of the exciting work of our organization—you may find a new opportunity or resource to support your own work!

Respectfully submitted,
Shari Stockero

Nominations and Elections

Jennifer Bay-Williams

Associate Vice-President for Nominations and Elections
University of Louisville



In 2021, the Nominations and Elections committee engaged in a range of recruitment and awareness activities to support the 2021 Elections. The 2021 ballot included positions for President-Elect, Treasurer, and Member-at-Large.

In Spring 2021, a new landing site for elections was created that included:

- A video conversation with past presidents (hosted by Courténay Miller)
- Video from recent past treasurers
- Position descriptions
- Invitation to nominate (including self-nominate)

In addition to these communication and recruitment strategies, we emailed all Affiliate Treasurers to invite them to consider serving AMTE as Treasurer and made phone calls to AMTE Members who have served in leadership roles to encourage them to consider running for President.

In 2021, we implemented the revised application form (started in 2020). These revisions included changes to prompts and the inclusion of word limits. The committee made these changes to align with eventual Candidate Statements, provide more clarity and guidance to applicants, and for consistency across applicants for a fair review.

Our committee was inspired by the applications across positions, illustrating the many talents, experiences, and commitment of AMTE members to donate significant time to the organization. We are grateful to everyone who nominated and/or submitted an application and encourage these candidates to resubmit in the future.

NOMINATIONS AND ELECTIONS COMMITTEE: Gwen Lloyd, Penn State University; Brenda Strassfeld, Touro College; Randy Philipp, San Diego State University; Jenny Bay-Williams, University

Constitution and Bylaws

of Louisville; Courténay Miller, College of Coastal Georgia; Amber Candela, University of Missouri - St. Louis; Mike Steele, NSF (Past President, Ex-Officio)

Barbara Swartz

Associate Vice-President for Constitution and Bylaws
West Chester University



The committee completed a formal review of the Constitution and Bylaws to ensure the document's accuracy in delineating the roles and duties of the organization. The committee sent recommendations for revisions to the Board and they were approved in September 2021.

CONSTITUTION AND BYLAWS COMMITTEE: Barbara Swartz, West Chester University; Kevin LoPresto, Francis Marion University; Jason Silverman, Drexel University; Khaled Alshehri, Imam Abdulrahman Bin Faisal University; Dan Clark, Western Kentucky University; Basil Conway, Columbus State University

Treasurer

Sarah Quebec Fuentes

Treasurer
Texas Christian University



Liaison to Communications & Outreach Division

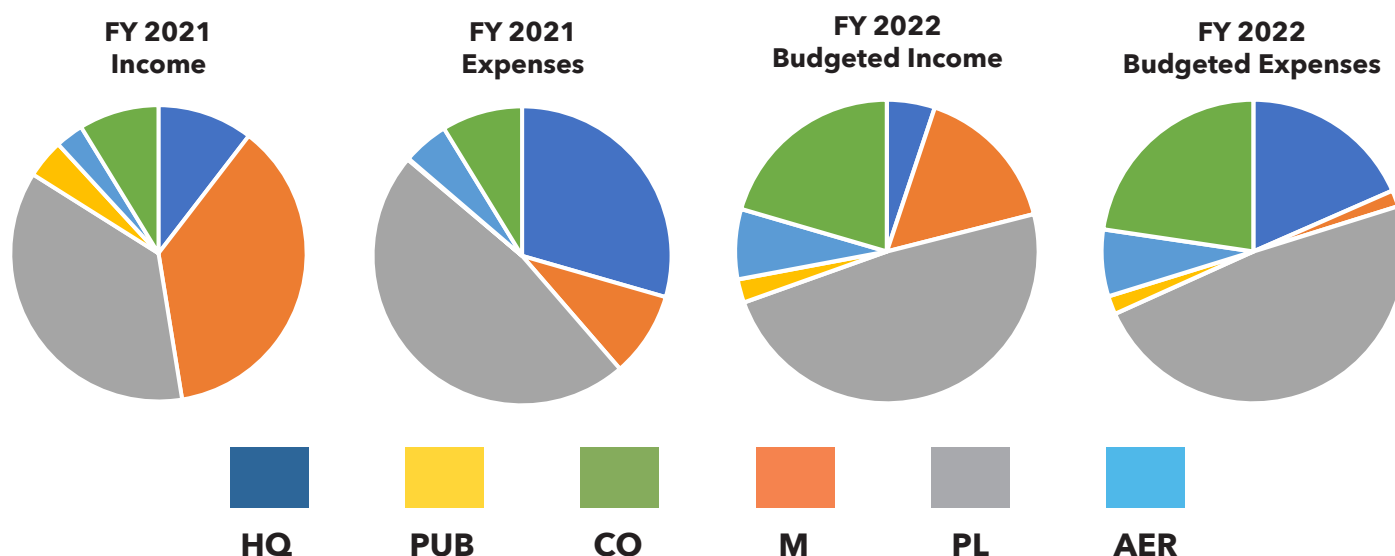
The Treasurer manages and documents all of the income (e.g., membership fees, donations, sponsorships, and conference registration) and expenses (e.g., invoices and travel reimbursements) of the organization. The Treasurer completes these responsibilities in collaboration with AMTE's Financial Services Manager, Executive Director, Board, and Finance Committee.

Finance Committee

The Finance Committee members include the President, the President-elect or Immediate Past-President, the Executive Director, the Treasurer, a member of AMTE who is external to the Board of Directors, and the Financial Services Manager. The purpose of the Finance Committee is to oversee the financial health of AMTE. The Finance Committee develops and monitors short- and long-term plans for the financial health of the AMTE organization across the activities of the divisions and headquarters.

For Fiscal Year 2021, the organization's income exceeded its expenses. Of the monies in the bank at the end of FY 2021, some is earmarked for special accounts (e.g., EMS Scholarship, NTLI Fellowship Award, STaR Program, and Susan Gay Scholarship), membership reserves, and rollover into the FY 2022 budget. This leaves \$278,022.85 in deep reserves, increasing this amount from FY 2020 and meeting a goal set for FY 2021.

AS OF	6/30/20	6/30/21
Banks Accounts Total	\$428,140.18	\$499,961.50
Special Accounts Total	\$150,610.81	\$167,728.65
Membership Reserves	\$35,392.00	\$20,274.00
For Next Year's Operating Budget	\$36,365.00	\$33,396.00
Deep Reserves	\$205,772.37	\$278,022.85



In FY 2021, the Total Income and Total Expenses were less than originally budgeted due to the COVID-19 pandemic. The Board planned the FY 2022 budget to accurately reflect our pre-pandemic income and expenses. The increase in the budgeted Total Income and Expenses is due to sponsoring events for multiple STaR cohorts, as seen in the Communications and Outreach division.

Goals for the upcoming year are to (1) make fiscal decisions that reflect the mission and goals of AMTE, (2) budget responsibly, and (3) continue to increase the amount of money in deep reserves.

DIVISIONS	FY 2021 BUDGET	FY 2021 7/1/2020 - 6/30/2021	FY 2022 BUDGET
HEADQUARTERS (HQ)			
HQ Income Subtotal	\$32,545.00	\$28,074.95	\$28,650.00
HQ Expenses Subtotal	\$91,540.00	\$37,042.40	\$103,090.00
MEMBERSHIP (M)			
M Income Subtotal	\$85,000.00	\$99,548.25	\$89,000.00
M Expenses Subtotal	\$9,705.00	\$11,559.76	\$9,750.00
PROFESSIONAL LEARNING (PL)			
PL Income Subtotal	\$272,000.00	\$98,164.59	\$271,300.00
PL Expenses Subtotal	\$275,800.00	\$59,741.15	\$268,900.00
PUBLICATIONS (PUB)			
PUB Income Subtotal	\$13,500.00	\$11,373.50	\$14,000.00
PUB Expenses Subtotal	\$8,500.00	\$170.00	\$11,000.00
ADVOCACY, EQUITY, AND RESEARCH (AER)			
AER Income Subtotal	\$41,800.00	\$8,310.00	\$41,800.00
AER Expenses Subtotal	\$39,800.00	\$6,250.00	\$39,800.00
COMMUNICATIONS AND OUTREACH (CO)			
CO Income Subtotal	\$52,000.00	\$23,527.15	\$114,520.00
CO Expenses Subtotal	\$71,500.00	\$11,006.01	\$126,730.00
Budget Income Total	\$496,845.00	\$268,998.44	\$559,270.00
Budget Expenses Total	\$496,845.00	\$125,769.32	\$559,270.00

Secretary

Cynthia Taylor

Secretary

Millersville University of Pennsylvania



As secretary of the AMTE Board of Directors, my role is to document the work of the board through recording minutes of regular board meetings or any special called meetings. In addition, I maintain a list of board actions made through motions during board meetings or via e-mail communication. I serve as board liaison to the Membership Division, which includes the Awards Committee, Affiliates Committee, and Membership Committee. In this role, I participate in meetings of these committees during the conference and periodically throughout the year.

Contractors

AMTE contracts with several individuals and businesses to provide services that are essential for our organization to operate.

- Overlooking all of our financial needs is our AMTE Financial Services Manager, Mary Beth Wallace, an independent contractor who works with our Treasurer and for the organization to maintain our financial records, process payments, and other day-to-day financial operations.
- Tax accountant Ryan Nemitz at Mitchell & Nemitz, PA. takes care of our tax preparation.
- We work with Mercer Consumer Services for the various types of insurance that are required of a non-profit association: officer's liability, event liability, and event cancellation insurances.
- Designotype Printers of Calumet, MI designed the conference graphics and the annual report.

Members-at-Large

Marrielle Myers

Board Member-at-Large
Kennesaw State University



In my role as a board member-at-large, I attended monthly board meetings, the annual board retreat, as well as Advocacy, Equity, and Research (AER) division meetings. As the liaison to the AER division, I worked to plan and speak at AMTE's first Community Conversation focused on Critical Race Theory; collaborated with the Membership Division to develop a mentoring survey, analyze the results, and create a mentoring program for early career BIPoC members; and supported individual AER committees with their projects (e.g., dissertation award, mentoring panel, building social media presence around equity) by soliciting feedback from the board. I was honored to once again serve on the ad hoc committee that planned the opening plenary panel for the annual conference and continued to review for *Mathematics Teacher Educator*. I, along with the division VP Sarah van Ingen Lauer, regularly contributed to other agenda items during board meetings to ensure equity, social, and racial justice were core components of our organization's work in accordance with our long-term goals. I remain thankful to my AMTE colleagues for their continued trust in me with this valuable role.

Farshid Safi

Board Member-at-Large
University of Central Florida



In my role as a first year board member-at-large, I benefited from attending and contributing to the monthly board meetings, the annual board retreat as well as serving as the liaison to the Publications division. In this role as the liaison to the Publications division, I communicated and assisted in various areas including serving as a reviewer to the CITE-Math journal. In addition, I communicated and will be serving as a reviewer to the AMTE Handbook submissions that are currently in progress. Furthermore, as a board member at large, I am learning how to effectively listen and communicate the needs and concerns of our broader AMTE membership and bring their voice to the AMTE board meetings and subsequent actions. I have made a deliberate effort to attend some Community Circles and other AMTE events to gain better insights into current efforts and ways that we can effectively continue to grow as an organization that serves the needs of the mathematics teacher educators community. During this first year, I am really

enjoying the opportunity to learn from so many wonderful colleagues with such great expertise in leading and accomplishing important organizational goals consistent with the mission and vision of AMTE. Contributing to several divisions and ongoing efforts that cut across our divisions is truly an honor and a privilege and I hope to continue to grow in my role as a Board Member-at-Large and find ways to represent, contribute and collaborate with my fellow board members.

Enrique Galindo
Board Member-At-Large
Indiana University



As an At-Large Board member, I support the mission and strategic priorities of AMTE by serving as liaison to the Professional Learning Division. I participate in Division and Committee meetings to share updates from the Board, and to learn about and support the work of the committees within the division. Along with VP Jennifer Suh, I update the Board on Division activities and accomplishments, and provide guidance on Board initiatives and procedures within the Division. Some highlights of my work this year included the opportunity to work with the Conference Committee as they planned and offered a virtual AMTE conference, and then as they planned to offer the 2022 conference in person; the opportunity to work with the Professional Learning Division (PLD) as various committees looked for creative ways to support the membership this year; and the opportunity to work with PLD Committees and the AMTE leadership on ways to make progress on the new strategic priorities for our organization.

Membership Division

Lisa Poling

Vice President for Membership
Appalachian State University



Within the Membership Division, our primary focus is to support and celebrate the individuals that makeup AMTE. Our division is made up of three committees, Affiliates, Awards, and Membership. 2021 has been a busy year for the Membership Division. Throughout the year, Hartono Tjoe, AVP of Affiliates, along with his committee continued to support and inspire state affiliates. To increase state participation, the Affiliates Committee worked to establish new policies to build and champion individual affiliates. The Awards Committee led by Todd Abel (AVP) supported the objectives of the Membership Division by selecting outstanding candidates for individual recognition through various awards. The Awards Committee spends much of the summer reviewing individual portfolios and considering the guidelines set forth for each award. Please visit the awards page at <https://amte.net/about/awards> to nominate a deserving colleague. Temple Walkowiak, AVP of Membership, organized and diligently worked to implement Community Circles (C²) as standing AMTE groups. There are six Community Circle groups that continue to meet year-round. Temple has also been an integral member of the Mentoring Ad Hoc Committee that was formed during the year. This committee is working to establish a sustainable model for mentoring within AMTE. With the new responsibilities in the Membership Division, the AMTE Board has approved and selected three individuals to help support Temple in her work. The newest members of the Membership Committee are Angela Broaddus, (Benedictine College), Richard Velasco (University of Iowa), and Dana Franz (Mississippi State University).

Affiliates

Hartono Tjoe

Associate Vice-President for Affiliates
Pennsylvania State University, Berks



The AMTE Affiliate Connections Committee continues to promote conversations and resolutions surrounding the goal of leveraging the members of AMTE national to support and sustain existing AMTE affiliates and to accommodate and nurture promising AMTE affiliates. Beginning in 2022, the committee is proud to offer financial support to our existing affiliates in the form of a lottery wherein one affiliate from each of the five affiliate regions submitting renewal dues by February 1, 2022 will be randomly selected to receive \$80 in financial support. In communicating with groups of

individuals interested in establishing new affiliates, progress has also been made, and we anticipate at least two new affiliates in the coming year.

AFFILIATE CONNECTIONS COMMITTEE: Hartono Tjoe, Pennsylvania State University, Berks; Torrey Kulow, Portland State University; Diana Moss, University of Nevada, Reno; Jennifer Fillingim, Madison County Schools; Pamela Bailey, Mary Baldwin University; Monica Merritt, Mount Saint Mary College

Awards

Todd Abel

Associate Vice-President for Awards
University of Central Arkansas



In 2021, the AMTE Awards Committee continued to celebrate outstanding contributors to mathematics teacher education. In addition to the regular awards cycle, the committee examined nomination and selection procedures in order that the many voices within our discipline might be heard. After the establishment and initial award of the Karen D. King Excellence in Advocacy Award in 2020, this new award was placed in a cycle with the three existing Excellence Awards. The upcoming awards will be Excellence in Scholarship (2023), Excellence in Teaching in Mathematics Teacher Education (2024), Karen D. King Excellence in Advocacy (2025), and Nadine Bezuk Excellence in Leadership and Service (2026). In addition, new procedures were established in order to broaden the range of nominations for the Judith Jacobs Lecture.

The Judith Jacobs Lecture will be presented at the 2022 Annual Conference by Sandra Crespo of Michigan State University. At the conference, presentations will also be given by Nadine Bezuk Excellence in Leadership and Service Award recipient Tim Hendrix, of Meredith College, and Early Career Award recipient Cathery Yeh, of Chapman University. Elementary Mathematics Specialist Scholarships were awarded to Carolyn Anderson, Christie Lee, and Taylor Pierce. Susan Gay Graduate Student Conference Travel Scholarships were given to Kristin Doherty, Jennifer Gonzalez, Mariya Rosenhammer, and Johana Zapata.

AWARDS COMMITTEE: Todd Abel, University of Central Arkansas; Carrie Lee, East Carolina University; Margaret Rathouz, University of Michigan, Dearborn; Pavneet Bharaj, Indiana University Bloomington; Yi-Jung Lee, University of Arkansas; Heidi Eisenreich, Georgia Southern University

Membership

Temple Walkowiak

Associate Vice-President for Membership
North Carolina State University



Based on the recommendations of the AMTE Membership Task Force that wrapped up their work in 2019, the AVP for Membership worked on two primary initiatives during 2021. First, in collaboration with the Conferences Committee, Community Circles were implemented during the 2021 Annual Conference. There were 16 Community Circles at the conference; 10 of the Circles met twice while the other 6 Circles met once. The table below shows how many people participated in Community Circles on the two dates the Circles were held.

Community Circle Participation: 2021 AMTE Conference

DATE	# OF PARTICIPANTS
Saturday, February 13, 2021	158
Friday February 12, 2021	63

Based on AMTE priorities, facilitator interest/availability, and perceived interest based on participation at 2021 conference, six Circles were identified to be year-round Circles during the 2021-22 academic year. Those Circles are: MTEs of Color, LGBTQ+ Inclusion in Mathematics Education, MTEs who are Sole MTE at Institution, Anti-Racist Teaching Practices in Mathematics Education, Statistics Education in MTE, and Early Career MTEs (including Graduate Students). The Community Circles are meeting three times virtually across the academic year with the option to meet up in person at the 2022 conference. Plans are underway for other Circles to reconvene and/or new Circles to be established.

The second initiative for Membership has been a focus on mentoring. In collaboration with the Advocacy, Equity, and Research Division, meetings were held to discuss taking a multi-pronged approach to mentoring and to develop a survey. The survey was administered to AMTE members to collect data on their mentoring needs, and results are informing the current development of plans for programming to target these varying needs.

Professional Learning Division

Jennifer Suh

Vice President for Professional Learning
George Mason University



AMTE is more than just a professional organization but a place where we get collegial support and fuel for our work. All our work in the Professional Learning Division aligns with this focused mission. The Program Committee and Conference Committee organized one of the most successful virtual conferences and are looking ahead and planning a face to face conference for the 2022 Annual Conference. Our registration for our face to face is on par with pre-pandemic numbers and shows that our MTEs do long for a chance to get together to reenergize with other MTEs and serve as a place where MTEs can network and support one another. This year, our Professional Development Committee attended to the needs of our MTEs with a launch webinar this past fall with the topic on Supporting MTEs with Re-entry into post-pandemic Teaching which was followed up by tips for publishing and integrating technology. In addition each year, this committee offers a manuscript review program to support early career educators. We had the pleasure of continuing our signature AMTE STaR program virtually and look forward to meeting in person! Our Technology Committee continues to disseminate the latest best practices through our Technology Blogs. Enrique Galindo, board liaison for this division, and I are excited to see the Professional Learning Division continue to provide our members meaningful professional offerings through webinars technology resources and networking opportunities at our annual conference in the coming years.

Conferences Committee

Colleen Eddy

Associate Vice-President for Conferences
University of North Texas



The 25th Annual AMTE Conference saw its first virtual conference under the leadership of Colleen Eddy, AVP of Conferences and the Conferences Committee. This year the Conferences Committee was excited and cautious in planning a face-to-face conference in Henderson, NV near Las Vegas at the Hilton Lake Las Vegas Resort & Spa. Besides all the regular planning involved in a conference, we did our best to anticipate and create an experience that was safe and enjoyable. This next year we look forward to AVP of Conferences transitioning to Julie James of the University of Mississippi. A special thank you to Rachel Harlow, Administrative Assistant to Conferences Committee, who supports the work of the committee.

CONFERENCES COMMITTEE: Colleen Eddy, University of North Texas; Suzanne Harper, Miami University; Lateefah Id-Deen, Kennesaw State University; Julie James, University of Mississippi; Gail Stewart, Hillsborough County Public Schools; Gabriel Matney, Bowling Green State University

Program Committee

Julie Amador

Associate Vice-President for Conference Programs
University of Idaho



The 2022 Annual Conference will mark the 26th annual meeting of AMTE and will be held in Henderson, Nevada. The conference will welcome more than 550 in-person registered attendees. To prepare for the conference, the 2022 Annual Conference Program Committee reviewed and revised the Call for Proposals. The Committee worked with All Academic to establish the online submission website for the 2022 Conference. The Call for Proposals was released in March 2021, and the submission website opened on April 1, 2021.



Rick Hudson

(2021 Conference
Program Chair)

During the submission period from April 1 through May 15, 2021, the Committee monitored submissions to ensure that all proposals met the expectations for submission and were ready for review. Each member of the committee led the review process for one of the nine strands. This process included the assigning of volunteers for review, ranking strand proposals, and making recommendations for acceptance.



Jeremy Zelkowski

(2023 Conference
Program Chair)

The Program Committee led 227 AMTE volunteers to conduct proposal reviews. The Committee would like to thank all of the reviewers and express our special appreciation to reviewers who submitted reviews on time. The conference schedule was finalized in November 2021. During December and January, Committee leaders supported the creation of the print program and provided information to speakers to prepare for the annual meeting.

In total, 427 proposals were submitted for review, and 248 of those proposals were accepted. The final program is comprised of:

- 104 Individual sessions
- 36 Discussion Sessions
- 55 Reports
- 12 Extended Sessions
- 10 Symposium Sessions
- 31 Poster Presentations
- 9 invited presentations;
- 3 award-winner sessions; and
- 3 sessions presented by AMTE sponsors.

The acceptance rate of 58% is slightly higher than the 55% acceptance rate for the 2021 conference. We are pleased with the quality and number of presentations on the program. This year's program includes 447 speakers.

ANNUAL CONFERENCE PROGRAM COMMITTEE: Julie Amador, University of Idaho; Rick Hudson, University of Southern Indiana; Jeremy Zelkowski, University of Alabama; Kelly Costner, Winthrop University; Rebekah Elliot, Oregon State University; Carlos Nico Gomez, Clemson University; Michelle Cirillo, University of Delaware; Jennifer Ward, Kennesaw State University; Robert Powers, Northern Colorado; Wendy Smith, University of Nebraska; Nirmala Naresh, University of North Texas; Lisa Skultety, University of Central Arkansas; Luke Reinke, University of North Carolina Charlotte; Stefanie Livers, Missouri State University; Casey Hawthorne, Furman University

Professional Development

Denise Polojac-Chenoweth

Associate Vice-President for Professional Development
University of South Florida



The Professional Development Committee provides ongoing professional development through webinars and other opportunities. In 2021, the AMTE Professional Development Committee also worked to serve the AMTE membership in four specific areas.

First, we organized professional development webinars designed to support the AMTE membership on various topics relevant to our profession:

- GFO Teacher Recruitment Session (Jean Lee, Tim Hendrix, Gary Martin, Amy Roth McDuffie, Glenn Waddell).
- Writing for MTLT: Guiding Thoughts for Mathematics Teacher Educators (Angela Barlow)
- NTLI Award Webinar: Using a Framework to Teach Preservice Mathematics Teachers How to Professionally Notice within Technology Mediated Environments (Nina Bailey and Demet Yalman Ozen).
- Supporting MTEs with Re-entry into post-pandemic Teaching (Joanne Williams, Rocky Fork Middle School (Tennessee); Jennifer McLean, West Side Middle School (West Virginia); Melissa Castro, School District of Hillsborough County (Florida); Crystal Lancour, Colonial School District (Delaware); Matthew O'Brien, University of South Florida (Florida)).
- Writing for the MTE Journal: Come learn how to get started! (Karen Hollerbrands, Mike Steele, Andy Tyminski, Alison Castro Superfine, Babette M. Benken).



Second, we continue to further our conference Manuscript Review Group (MRG) initiative that premiered at the 2019 AMTE conference. The MRG, developed in partnership with the STaR program, supports AMTE members who may not have had the opportunity to participate in MRG's by providing a safe and encouraging environment to receive feedback on a manuscript. After a successful virtual 2021 AMTE Conference, the Professional Development Committee is working to grow and implement the initiative during the 2022 AMTE Conference program, and we are excited to return it to an in-person, collaborative experience.

Third, we are working to adapt our popular annual conference session "I am New to Mathematics Teacher Education: Realities of Teaching, Scholarship, and Service" to support the current and changing challenges experienced by early career mathematics teacher educators. For the 2022 AMTE Conference, we are excited to add three new discussion groups to this session: Navigating academia as an MTE of color; Creating a network of support and mentorship; and Getting your research agenda off the ground through creating a research and publishing pipeline. These new topics were developed based on feedback from the 2021 conference and will join these other popular discussion groups: Designing/implementing a methods course; Designing/implementing a content course; Connecting with schools; Managing work and life responsibilities; Coping as the lone math educator in your department.

Lastly, we were honored to partner with the AMTE Publications Group to work with several authors to organize and provide the AMTE membership with supplementary material through AMTE's Supplementary Materials for AMTE Standards webpage.

We continue to create professional development opportunities to meet the most current and relevant needs for the AMTE membership and are very excited about some of the initiatives and opportunities currently in the planning stages of development. We are thankful for the opportunity to serve the AMTE membership, and we hope that AMTE members appreciate the tireless volunteer work of the 40 members of the committees of the professional learning division.

PROFESSIONAL DEVELOPMENT FOR MEMBERS COMMITTEE: Kristen Bieda, Michigan State University; Denise Chenoweth, University of South Florida; Johnna Bolyard, West Virginia University; Ruby Ellis, University of Missouri; Lynsey Gibbons, Boston University; Erin Baldinger, University of Minnesota

STaR Fellows Program

Maria Fernandez

Associate Vice-President for STaR Fellows Program
Florida International University



During the pandemic, the STaR Fellows Program continued to bring together early career mathematics education faculty from institutions of higher education through virtual events, providing them with opportunities to network virtually and support each other in navigating challenges they often face related to research, teaching, and service. As is the norm for STaR, we held a follow-up meeting for the 2020 STaR Cohort, as part of the virtual 2020 AMTE Annual Conference. Then in the summer of 2021, we completed a second virtual part to their 2020 virtual summer institute. As for the 2021 STaR Cohort, we held a week-long virtual summer institute that we are eagerly planning to cap-off with a shorter, in-person summer institute in Park City, Utah during summer 2022. During these two cohorts, the STaR program has addressed many current issues simultaneously being discussed in AMTE related to teaching, research and service including issues of equity, social justice, culturally relevant pedagogy, power, privilege, and oppression.

While it was exciting to meet these new STaR Fellows virtually, we are thrilled to provide opportunities for the 2020 and 2021 STaR Cohorts to meet in person for the first time at the 2022 AMTE Annual Conference to continue to build supportive relationships through formal and informal experiences to connect with each other. Additionally, we are hosting a STaR Meet and Greet at the start of the conference that welcomes all past and present STaR Fellows.

Finally, we are looking forward to welcoming the 2022 STaR Cohort to an in-person institute during the summer of 2022. The week-long institute is planned for mid-June to be held in Park City, Utah.

STAR PROGRAM COMMITTEE: Maria L. Fernandez, Florida International University; Rebecca Judith Quander, University of Houston-Downtown; Mathew Felton-Koestler, Ohio University; Dorothy Y. White, University of Georgia

Technology Committee

Dawn Woods

Associate Vice-President for Technology
Oakland University



The Technology Committee is dedicated to providing our members with strategies and activities to improve the integration of technology in mathematics education. This year we vetted contributions from our members on tips for technology integration and online teaching through our AMTE Tech Talk Blog. We reviewed and revised our Technology Position Statement to align with what we know from contemporary research. The committee also reviewed submissions and made a recommendation for the NTLI award.

TECHNOLOGY COMMITTEE: Dawn Woods, Oakland University; Michael Todd Edwards, Miami University; David Glassmeyer, Kennesaw State University; Erin Krupa, North Carolina State University; David Denton, Seattle Pacific University; Kathryn Early, Auburn University

Local Arrangements

The local arrangements committee supports the annual conference by helping to prepare for the conference by securing technology, printing materials, and helping with shipping and receiving. They also recruit volunteers to run the registration desk at the conference.



Jeff Shih, Co-Chair
University of Nevada Las Vegas



Travis Olson, Co-Chair
University of Nevada Las Vegas

Publications Division

Babette Benken

Vice President for Publications
California State University, Long Beach



A general goal of this division is to provide quality publications to the membership that promote the goals of AMTE and to increase the visibility of our publications to a broader audience. The Publications Division consists of the three publications of AMTE, *Mathematics Teacher Educator (MTE)*, *Contemporary Issues in Technology and Teacher Education -Mathematics (CITE-Math)* and *Connections* (newsletter-type publication), along with our Publications Review Committee. Our blind peer-review journals (*MTE*, *CITE-Math*) publish quality manuscripts focused on the needs and interests of our membership and the greater mathematics teacher education community. We provide a session at every AMTE Annual Conference to help authors learn about and develop a manuscript for submission to our publications. The editors are also willing to work with you prior to your submission to answer any questions you may have about the submission process and to provide some quick, initial feedback on your manuscript or idea. All of the editors and members of the respective editorial panels are a hardworking group of dedicated people who volunteer their time. Information and links for each publication/committee are posted on our Publications page on the AMTE website.

The Publications Review Committee (PRC) helps to facilitate the review process for proposals for other types of publications submitted to AMTE. The proposal form is on the Publications web page and includes the directions on how and what to submit. This form is for the publication of books, monographs, resources, etc. that the PRC will consider and is not for journal or newsletter submissions; those types of submissions will continue to go directly to the publication and their respective guidelines should be followed. All recommendations made by the PRC will go to the Vice President for Publications, and eventually to the AMTE Board for a final vote and approval. The VP of the Division is also the overarching Series Editor for the AMTE professional books and monographs, published by Information Age Publishing (IAP), George Johnson, President. This past year we solicited manuscripts and began the review process for a new Volume 5 in our AMTE Professional Book Series, entitled *Reflection on Past, Present and Future: Paving the Way for the Future of Mathematics Teacher Education*, which will be a handbook for mathematics teacher education that will help to move the field forward; tentative publication date is late summer / early fall 2022. The Division also selected new sets of materials to support the *AMTE Standards for Preparing Teachers of Mathematics* in 2021 and has begun, with support from AMTE's web services, to upload the full sets for members.

Mathematics Teacher Educator Journal

Editor: Karen Hollebrands,
North Carolina State University



Mathematics Teacher Educator (MTE) published three issues in 2021 (February, June, and September). The February 2021 issue contained feature articles on supporting teachers' evaluations of student arguments with sorting tasks, developing teachers' inquiry stance through "double demonstration lessons," a practice-based unit on learning to launch cognitively demanding tasks, and supporting teachers' professional judgment around digital technology use. February's Editorial focused on the connections across research questions, data, methods, and claims, as part of continued efforts to support prospective *MTE* authors.



Associate Editor:
Valerie Faulkner
North Carolina
State University


The June 2021 issue featured *MTE*'s first Focus Issue on "Equity, Identity, and Power." The issue opened with an editorial on disrupting myths of neutrality in mathematics, mathematics education, and mathematics teacher education. The four featured articles addressed mathematics teachers' understanding of privilege and oppression, examining mathematics teacher educators' professional growth exploring power and oppression, learning mathematics while learning about the work, and developing an asset view of students using learning trajectories.

The September 2021 issue contained feature articles on supporting prospective elementary teachers' math anxiety through mindset messaging, use of the "Show-Me Narrative" to support teachers' growth in eliciting and using evidence of student thinking, the use of case studies to improve mathematics teacher education, and developing skills for exploring children's thinking through one-on-one work with students. The September Editorial provided suggestions for authors who are preparing a manuscript for the *MTE* that is based on a dissertation.

The journal will again publish three issues in 2022. There will be a new article format, called "Perspectives on Practice," which will invite authors to focus on an innovation in a previously published *MTE* article and describe how it was interpreted, iterated, or improved in practice. The initial call for "Perspective on Practice" submissions was announced in December with articles from that call set to appear starting in the September 2022 issue.

Associate Vice President for MTE
Journal: Matthew Campbell
West Virginia University





In 2021, Mike Steele and Kate Johnson began their terms as Editor-Designate and Associate Editor-Designate, working with current Editor and Associate Editor, Karen Hollebrands and Valerie Faulkner, throughout the year to ensure a smooth transition. We would like to extend tremendous gratitude to Hollebrands and Faulker, who will end their terms in April 2022. They have led a period of the journal that has seen new ideas, improved processes, and increased outreach and communication—all setting the stage for continued growth in the years to come. We would also like to acknowledge the work of Emily Elrod and Heather West who worked as graduate assistants in the Editorial Office at North Carolina State University.

Interviews with article authors have continued to be published on the *Mathematics Teacher Educator Podcast* feed. Nine new episodes were released in 2021 (as of December 10), bringing the total number of episodes to 31. There have been nearly 27,000 total downloads since the podcast's start in 2018. We are very grateful to Eva Thanheiser for her continued work as host of the podcast, which has helped the journal expand its impact and reach.

The effects of COVID-19 have impacted manuscript submissions and timelines for the journal. In 2021, the journal had 48 manuscripts submitted. Authors have been provided more time to submit revisions. More time has also been needed to secure reviewers for manuscripts and to receive reviews. Even with these challenges, for manuscripts that receive full review, we continue to meet our goal of a turnaround time of about 3 months. The Editorial Board has been working throughout the year to consider ways to increase manuscript submissions and to diversify the authorship and readership of the journal. Members of the Editorial Board have also hosted webinars through AMTE to support prospective authors.

In addition to our departing editorial office, we would like to extend a thank you to the Editorial Panel member and Chair, Matthew Campbell, who will be finishing his term of service in April 2022. Thanks also to Beth Kobett who concluded her term as NCTM Board Liaison to NCTM in September 2021. Zandra de Araujo, who was in her final year as a Panel member, has started a term as *MTE's* new NCTM Board Liaison in line with the start of her term on the NCTM Board of Directors.

MTE JOURNAL EDITORIAL PANEL: Matthew Campbell, West Virginia University; Zandra de Araujo, University of Missouri; Alison Superfine-Castro, University of Illinois-Chicago; Rajeev Virmani, Sonoma State University; Robert Q. Berry, University of Virginia; Andy Tyminski, Clemson University

Connections! Newsletter

Susan Swars Auslander

Associate Vice President for Connections! Newsletter (Editor)
Georgia State University



Connections published four issues in 2021: March (Spring), June (Summer), September (Fall), and December (Winter). These issues contained updates and solicitations for AMTE's members as well as 12 externally submitted articles, which underwent a blind review process by two members of the Editorial Panel and additional review by the Editor. These brief articles focused on a variety of important topics for mathematics teacher educators, such as: fostering partnerships with K-12 schools and community organizations; intentionality related to equity and justice within programs and courses; professional development of mathematics teacher leaders in K-12 schools; and elementary teachers' choices of curriculum. Also included were articles on the results of the AMTE Equity-focused Member Survey, with focal areas of analyses and interpretation along with recommendations.

Connections disseminated its second-ever special call for manuscripts: "Integrating across Disciplines and Areas in Mathematics Teacher Education." The call focuses on models, examples, challenges, and lessons learned related to the integration of mathematics teacher education with other disciplines/areas. The articles are targeted for publication in the Summer 2022 issue. Moving forward, *Connections* looks to have additional special calls for manuscripts focused on timely, needed, and important topics that are emergent in nature.

Thank you to the members of the Editorial Panel for their hard work and dedication, especially Rebecca Dibbs, Texas A&M Commerce, and Ann Wallace, James Madison University, who are finishing their 3 years of service on the panel. A special thanks to Babette Benken, VP for Publications, for her continued consultation and support. The panel extends a welcome to two new members at the conclusion of the AMTE 2022 Annual Conference in February: Cathrine Maiorca, California State University, Long Beach, and Allyson Hallman-Thrasher, Ohio University.

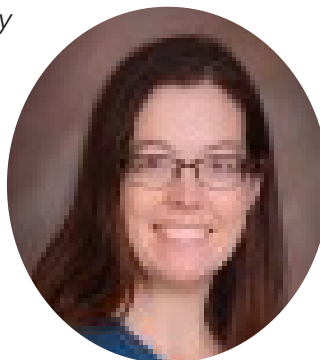
CONNECTIONS EDITORIAL PANEL: Rebecca Dibbs, Texas A&M Commerce; Ann Wallace, James Madison University; Sheryl Stump, Ball State University; Christine Trinter, University of Notre Dame; Matt Chedister, University of Wisconsin- La Cross; Sarah Kasten, Northern Kentucky University

CITE-Math Journal

Shannon Driskell, Co-Editors
University of Dayton
Associate Vice-President for CITE Journal



For 2021, *Contemporary Issues in Technology and Teacher Education-Mathematics (CITE-Math)* will have a total of 6 published manuscripts over the span of 4 issues. As of November 28, 2021, *CITE-Math* has had 13 article submissions with 3 accepted, 1 awaiting resubmission, 2 under review, and 7 rejected. Our reviewer pool has increased through personal email communications with mathematics educators interested in *CITE-Math* gathered from the AMTE volunteer form, as well as through recommendations from other *CITE-Math* reviewers.



Ann Wheeler, Co-Editor
Texas Woman's University
Associate Vice-President
for CITE Journal

The publication session at the 2021 Annual Conference allowed potential authors an opportunity to meet with the co-editors of *CITE-Math* to ask questions about publishing. At the 2021 AMTE Annual Conference, we welcomed Mary Enderson (Old Dominion University) and Mustafa Demir (University of Detroit Mercy) to the Editorial Panel.

At the end of the 2022 AMTE Annual Conference, JoAnn Cady and Allison McCulloch will be finishing their terms on the Editorial Panel and Shannon Driskell will be concluding her term as Co-editor. Their continued dedication to *CITE-Math* has been vital over the past years. During the 2022 AMTE Annual Conference, we will welcome Lindsay Reiten (University of Northern Colorado) and Linda Zientek (Sam Houston State University) as Editorial Panel members with Allison McCulloch (University of North Carolina at Charlotte) as the new Co-editor. Thank you to all who have reviewed for *CITE-Math*; we appreciate your valued service.

CITE EDITORIAL PANEL: JoAnn Cady, University of Tennessee; Allison McCulloch, University of North Carolina; Mi Yeon Lee, Arizona State University; Tracy Goodson-Espy, Appalachian State University; Jason Silverman, Drexel University; Mary Enderson, Old Dominion University; Mustafa Demir, University of Detroit Mercy

Publications Review

Babette Benken

CSU Long Beach

Interim Associate Vice-President for Publications Review



At the end of 2020, the Publications Review Committee (PRC) received proposals in response to the Call for Supplemental Materials to Support the Implementation of AMTE's Standards for Preparing Teachers of Mathematics. In 2021, with support from the VP for Publications (Babette Benken), the Committee completed their review of these proposals and recommended that 6 sets of materials be published on the AMTE website; they have since added an additional set of materials. The VP for Publications then worked with AMTE's Professional Development Committee to finalize these materials with the authors and prepare them for AMTE's web services to upload. This process will be completed during spring 2022.

The Committee has also supported creation of a review guide for Volume 5 of AMTE's Professional Book Series and has assisted the AVP with the review process. Finally, the Committee supported the review of a new proposal for a Volume 6 in the Professional Book Series.

The PRC welcomed three new members this past year: Kelley Buchheister, Kelly Edenfield, and Tina Mitchell. We greatly thank Ryan Higgins, who needed to leave the PRC this fall, for his service.

PUBLICATIONS REVIEW COMMITTEE: Ryan Higgins, Coker College; Lynn Hodge, University of Tennessee; Theresa Gurl, Queens College CUNY; Kelley Buchheister, University of Nebraska Lincoln; Kelly Edenfield, University of Georgia; Tina Mitchell, Delaware State University

Advocacy, Equity and Research Division

Sarah van Ingen Lauer

Vice President for Advocacy Equity and Research
University of South Florida



Because of the groundwork laid in 2020 for moving into some exciting new directions, in 2021 the AER Division was focused on putting this vision into action. Our cross-committee collaboration was evident as AMTE Board Member at Large and division liaison Marrielle Myers led our efforts to launch our first online Community Conversation around responses to public discourse about Critical Race Theory. This was also the first year that the former "Emerging Issues Committee" was able to enact its new charge as the "Advocacy Committee," and a new initiative for mentoring early career BIPOC faculty has emerged from this committee. Our Equity Committee spearheaded our engagement in social media discussions around CRT/Equity, and our Research Committee has articulated a new dissertation award that is also centered in our commitment to equity. I am enormously grateful for the leadership of our Board Member liaison, Marrielle Myers, as well as our Co-Associate Vice Presidents, Zandra De Araujo and Rob Wieman; Carlos Lopez Leiva and Crystal Kalinec-Craig; and Meghan Shaughnessy and Mary Candace Raygoza. Finally, our division offers its warmest welcome to our incoming Vice President Crystal Kalinec-Craig, and looking forward to her leadership starting in 2022.

Advocacy Committee

Zandra De Araujo

Co-Associate Vice President of the Advocacy Committee
University of Florida



Last year we completed our transition from the Emerging Issues Committee to the Advocacy Committee. Therefore, this year was our first full year as the Advocacy Committee. We spent the early part of this year compiling resources related to antiracist mathematics education work. This compilation is now housed on the AMTE website under the Advocacy Committee tab. We also committed substantial portion of time toward enhanced AMTE's programming in relation to mentoring for faculty who are underrepresented in our field. This work involved interpreting survey data from the AMTE membership, designing a session for the 2022 conference focused on this topic, and continuing to work with the AMTE board to design future efforts in this area.



a

Robert Wieman

Co-Associate Vice
President of the
Advocacy Committee
Rowan University

ADVOCACY COMMITTEE: Zandra de Araujo, University of Florida; Robert Wieman, Rowan University; Jordan Register, University of North Carolina Charlotte; Eva Thanheiser, Portland State University; Patrice Waller, California State University Fullerton; Kimberly Morrow-Leong, George Mason University; Nina Bailey, University of North Carolina at Charlotte

Equity Committee

Carlos Lopez Leiva

Co-Associate Vice President of the Equity Committee
University of New Mexico




The Equity Committee from 2021-2022 accomplished several achievements as a part of our charge with AMTE. First, the committee followed through on analyzing different aspects of the Equity Survey and completed three Connections Newsletter articles: 1) Suazo-Flores et al. (2020) published, "Mathematics teacher educators' conceptualizations of equity;" 2) Zavala et al. (2021) published, "Equity Committee survey results part II: Current issues in equity and recommendations for action steps;" and finally 3) Lopez-Leiva and Ramsay-Jordan (2021) published, "Equity Committee Conversation Corner." These three pieces communicated the findings from the survey that impacts current members' understandings of equity and the ways in which the association can best support members to address these issues in their teaching, research, and service. The survey findings and the newsletters also helped to raise new questions and directions for the committee to follow (e.g., ways in which AMTE can support BIPOC and LGBTQIA members with their work and offer more strategic networking sessions at the conference).



Crystal Kalinec-Craig

Co-Associate Vice President of the Equity Committee
University of Texas San Antonio

The Equity Committee also held multiple meetings regarding the current backlash against Critical Race Theory and those who use CRT as a framework in their teaching, research, and service. The committee discussed several ways that they could respond to groups who frame this strategic disinformation assault. We decided to analyze the existing AMTE position papers and extract quotes that could be transformed into graphics, images that clearly reiterate the Association's stance on CRT and equity in general, while also making an image that could be easily shared. This also led us to have a representative on the Community Conversation meeting about CRT: Dr. Ramsay-Jordan participated in the panel about CRT and Dr. Kalinec-Craig helped as a discussant of the ideas across the panel.



The Equity Committee participated in a presentation at the Annual Conference regarding our current work and future goals. We have a presentation at the Las Vegas conference in 2022 regarding the notion of Nepantla and our work as mathematics teacher educators who seek ways to dismantle issues of inequity and injustice in our work and communities. We look forward to this presentation because it will not only be a presentation that affords each member an opportunity to share how they address the notion of Nepantla in their work, but also invite more members to engage in Nepantla long after the conference is over.

The Equity Committee has ideas for the future. We are looking at future surveys that we can analyze and disseminate the findings to the larger membership. The Committee is also curious about ways to support the BIPOC mentoring and networking efforts at the Annual Conference. Finally, we would like to offer suggestions for new Community Conversation topics that address the broader goals of the Advocacy, Equity and Research Division.

EQUITY COMMITTEE: Carlos López Leiva, University of New Mexico; Crystal Kalinec-Craig, University of Texas San Antonio; Belinda Edwards, Kennesaw State University; Maria Zavala, San Francisco State University; Elizabeth Suazo-Flores, Purdue University; Natasha Ramsay-Jordan, University of West Georgia; Mariah Simmons, Cobb County Schools; Anthony Fernandes, University of North Carolina at Charlotte.

Research Committee

Meghan Shaughnessy

Co-Associate Vice President of the Research Committee
Boston University



In 2021, the Research Committee embarked on a proposal for AMTE to establish an annual dissertation award, to celebrate, uplift, and honor the work of emerging mathematics teacher education scholars whose research advances social and racial justice. AMTE aims to strengthen the research and research-based practices of mathematics teacher education, with a commitment to supporting mathematics teacher educators in understanding how issues of social and racial justice undergird all of our work (*longer-term goal #3 in the strategic plan*). Considering this, the dissertation award would select a scholar whose work embodies this commitment. As a committee, we brainstormed together and learned from dissertation awards granted by other professional organizations. We submitted a description of proposed details of the award to AER Division leadership and to the AMTE board. The elements of the award proposal include: the purpose of the award, the number of awards, eligibility for the award, the application and review process, and what the awardee would receive. In 2022, pending Board approval, we hope to bring the process to fruition and grant the inaugural round of awards.



Mary Candace Raygoza

Co-Associate Vice President
of the Research Committee
St. Mary's College
of California

RESEARCH COMMITTEE: Leslie Dietiker, Boston University; Meghan Shaughnessy, Boston University; Mary Raygoza, St. Mary's College of California; Melissa Boston, Duquesne University; Chandra Orrill, University of Massachusetts Dartmouth; Hector Torres, Bethune-Cookman University; Frances Harper, University of Tennessee, Knoxville

Communications & Outreach Division

Dusty Jones

Vice President for Communications & Outreach
Sam Houston State University



The Communications & Outreach Division facilitates AMTE's efforts to communicate information and resources to its members, sponsors, and donors. This Division encompasses all marketing, media, and sponsorship-related activities of the organization.

In the past year, the Teaching Math Teaching Podcast completed its second season, giving listeners access to encouraging and enlightening conversations that often happen at an AMTE conference. Episodes highlighted the work of mathematics teacher educators from diverse backgrounds and professional settings. Under the leadership of Mandy Jansen, AMTE Social Media Director, our organization has begun to develop policies to share information efficiently and effectively. We are also investigating practices to utilize social media in ways that build relationships within the community of mathematics teacher educators. In 2022, the work of the division will continue and broaden the efforts from the past year that are listed below in the reports for Communication, Sponsorship, Marketing, and STaR Fundraising.

I am very grateful for the dedication, care, and excellence demonstrated by the leadership team in this division, including the Associate Vice-Presidents and the Social Media Director.

Communications

Steve Rhine

Associate Vice-President for Communications
Pacific University



The AMTE website continues to be the hub of communication to our members and the world, distributing over 3,000 pages of website content. In the past year there were over 50,000 users of the site, which is 5.1% less than the previous year. Each session on the site lasted an average of a bit over 2 minutes. Our website and social media support the work of the organization through dissemination of opportunities and information and help connect mathematics teacher educators. The website continues to host webinars, the *Connections* newsletter, and other AMTE publications including the AMTE Standards for Preparing Teachers of Mathematics, a well-used job-listings page, nominations and elections, awards, the STaR program and the

annual conference. Committees are actively creating resources in their sections of the website as well. We also continue to enhance the annual conference with a mobile app. With our transition to Cividesk as our web services support, we now have a fast, secure, and stable system for data management and reporting with no known down time in the past year.

Sponsorship

Raymond LaRochelle

Associate Vice-President for Sponsorship
University of Delaware



In 2021, we continued to develop the workflow document of procedures for contacting and communicating with sponsors and getting relevant information to the AVP of Sponsorship, Executive Director, Treasurer, and Conference Committee. The timeline for the AVP Sponsorship Duties was updated accordingly. In addition, we revised the 2021 invitation letters for sponsors to include a “soft ask” for funding for the STaR program. We also discussed advertisement opportunities in the Connections Newsletter, and a document was created for future AVPs of Sponsorship that includes information about soliciting sponsors to purchase newsletter advertisements. We also plan to seek sponsors that might support AMTE in achieving long-term goal 2, that of recruitment, retention, and diversification of the mathematics teacher educator pipeline. A draft invitation letter for such sponsors was created.

We are very thankful for our returning sponsors, CPM Educational Program, Information Age Publishing, Maier Math Foundation, and National Council of Teachers of Mathematics. We are also very thankful for two new sponsors, Budapest Semesters in Mathematics Education and Math Olympiad for Elementary and Middle School.

Marketing

Sandi Cooper

Associate Vice-President for Marketing
Baylor University



In 2021, the Ad Hoc Committee for Marketing worked together to establish goals for a strategic marketing plan for the organization. At this time, the primary goal is to grow and diversify the membership of AMTE through the promotion of the benefits of membership, including resources and a nurturing professional community. In order to accomplish this goal, a Marketing Plan was organized with strategies to Reach, Engage, and Connect with professionals from groups who are currently underrepresented in AMTE, including clinical faculty, K-12 supervisors and math coaches, professional development providers, faculty at two-year and community colleges, and faculty from historically Black colleges and universities, Hispanic-serving institutions, and Tribal Colleges and Universities. The targeted outcome is to grow and diversify the membership of AMTE as well as diversify voices in AMTE Leadership to influence policies and practices in mathematics teacher education.

AD HOC COMMITTEE FOR MARKETING: Angela Barlow, University of Central Arkansas; Amy Brass, Penn State University; Melva Grant, Old Dominion University; Kaili Hardamon, Detroit Public Schools; Audrey Meador, West Texas A&M University; Mohammed Qazi, Tuskegee University; Tad Watanabe, Kennesaw State University

STaR Fundraising

Jeff Wanko

Associate Vice-President for STaR Fundraising
Miami University



In 2021, the STaR Fundraising Committee established a goal of raising \$50,000 to support the AMTE STaR Program. We decided that our targeted goal would be roughly divided into thirds, with one-third coming from corporate sponsors, one-third from individual donors and affiliates each supporting at least one STaR Fellow (at \$1700 each), and the final third coming from smaller donations (including from previous STaR fellows through the Cohort Challenge). As of early December 2021, we are close to reaching this goal. The committee met five times this year and laid out detailed plans for fundraising, including contacting the AMTE affiliates, launching the Cohort Challenge and communicating with cohort liaisons monthly, and sending out thank you notes to all donors. We also maintained regular outreach in the AMTE Connections newsletter by detailing and implementing plans for regular quarterly features.

STAR FUNDRAISING COMMITTEE: Matt Campbell, West Virginia University; Lisa Poling, Appalachian State University; Natasha Gerstenschlager, Western Kentucky University; Jeff Wanko, Miami University; Liza Bondurant, Delta State University; Zareen Rahman, James Madison University

Awards

JUDITH E. JACOBS

Recognizes a distinguished mathematics teacher educator with an opportunity to challenge her or his colleagues on a topic of his or her choice in a plenary session at the Annual AMTE Conference. The Judith Jacobs Lecture was established in 2003 to honor Dr. Judith E. Jacobs, one of the founding members of AMTE. Dr. Jacobs was instrumental in developing AMTE into a national organization and in the development of the AMTE conference with its current structure and emphasis on interaction. Judith Jacobs is an active member who served as the treasurer, the president, and as the first executive director. The Judith E. Jacobs was established after her tenure as executive director.

2022: Sandra Crespo
Michigan State University

Presentation: What does it mean and what will take to be an anti-racist mathematics teacher educator?



2021: Marta Civil
University of Arizona

Presentation: What Does It Mean to Be a Mathematics Teacher Educator?



Excellence Awards

In 2006, the AMTE Board of Directors established the AMTE Excellence in Mathematics Teacher Education Awards, to be presented at the Annual Conference on a three-year rotating basis: The Excellence in Teaching Award, the Nadine Bezuk Excellence in Leadership and Service Award, and the Excellence in Scholarship Award. In 2020, the Board of Directors added the Karen D. King Excellence in Advocacy Award. The Excellence Awards recognize annually a colleague for unique contributions that have made a significant and lasting impact in mathematics teacher education. The first Excellence in Teaching Award was given in 2006, the first Excellence in Leadership and Service Award in 2007, the first Excellence in Scholarship Award in 2008, and the first Excellence in Advocacy Award in 2020. The awards are given on a four-year rotating basis.



AMTE NADINE BEZUK EXCELLENCE IN LEADERSHIP & SERVICE AWARD

2022: Tim Hendrix
Meredith College

AMTE EXCELLENCE IN SCHOLARSHIP AWARD

2020: AnnaMarie Conner
University of Georgia



AMTE EXCELLENCE IN TEACHING IN MATHEMATICS TEACHER EDUCATION AWARD

2021: W. Gary Martin
Auburn University

AMTE KAREN D. KING EXCELLENCE IN ADVOCACY AWARD

2021: Dorothy Y. White
University of Georgia



AMTE EARLY CAREER AWARD

Since 2009, the AMTE Early Career Award recognizes a mathematics teacher educator who, while early in her or his career, has made distinguished contributions and shows exceptional potential for leadership in one or more areas of teaching, service, or scholarship.



2022: Cathery Yeh
Chapman University



2021: Lynsey Gibbons
Boston University

NATIONAL TECHNOLOGY LEADERSHIP INITIATIVE FELLOWSHIPS

Since 2000, the Society for Information Technology and Teacher Education (SITE) has collaborated with four teacher education associations representing the content areas of mathematics, science, English & language arts, and social studies education through the National Technology Leadership Initiative (NTLI). The NTLI fellowships were established to recognize exemplary presentations related to integration of technology in core content areas at the annual meetings of each participating association; in mathematics, that fellowship has been recognized at the AMTE Annual Conference.

AMTE identifies the recipient(s) of its NTLI fellowship through a competitive process that includes the submission of a paper in advance of the conference. The recipient of the award receives travel funding (\$1200, made possible by a donation by Texas Instruments) to participate and make a presentation at the SITE Annual Conference. The paper is forwarded and recommended for publication in the CITE journal by the AMTE Technology committee after additional review.

2022 MANUSCRIPT:

"Transformative Technology for Equity-centered Instruction"



Jennifer Suh
George Mason University



Katherine Roscioli
George Mason University



Holly Tate
George Mason University



Kimberly Morrow-Leong
George Mason University

2021 MANUSCRIPT:

"Using a Framework to Teach Preservice Mathematics Teachers how to Professionally Notice within Technology Mediated Environments"



Nina Bailey
University of North Carolina at Charlotte



Demet Yalman Ozen
Middle Tennessee State University



Allison McCulloch
University of North Carolina at Charlotte



Lara Kristen Dick
Bucknell University



Jennifer Nickell Lovett
Middle Tennessee State University



Charity Cayton
East Carolina University

MATHEMATICS TEACHER EDUCATOR OUTSTANDING REVIEWER AWARD

In 2017, at the request of the MTE Journal Editorial Panel, the AMTE Board of Directors established the Mathematics Teacher Educator (MTE) Outstanding Reviewer Award, to be presented each year at the Annual Conference. The purpose of the Mathematics Teacher Educator Outstanding Reviewer Award is to recognize a colleague who, through their service as a reviewer for the Mathematics Teacher Educator journal, provided exemplary reviews of the highest quality and value for editorial review of submitted scholarly manuscripts.



2022

Carrie Lee

East Carolina University



2021

Allyson Hallman-Thrasher

Ohio University

SUSAN GAY TRAVEL SCHOLARSHIPS

The Susan Gay Graduate Student Conference Travel Scholarship was established to provide financial support to graduate students to attend the AMTE Annual Conference. Awarded since 2012, this scholarship is named after Susan Gay in honor of her extraordinary service to AMTE over many years as the conference director, president, secretary, and board member-at-large. Up to four graduate students receive this award each year, which covers the cost of graduate student early registration and an additional \$400 to offset the cost of attending the conference. To qualify for the scholarship, one must be a doctoral student making progress toward completion of a degree.



2022

Johana Thomas Zapata

Washington State University



2022

Mariya Rosenhammer

Auburn University



2022

Jennifer Gonzales

Baylor University



2022

Kristin Doherty

Michigan State University

2021 SUSAN GAY TRAVEL SCHOLARSHIPS



Maddy Ahearn
University of
Oregon



Amy (Amber) Brass
Penn State
University



Simon Byeonguk Han
Portland State
University



Brandi Dailey
Auburn University



Yency Choque Dexter
University of Puerto Rico,
Río Piedras Campus



Siddhi Desai
University of
Central Florida



Daniel Edelen
University of
Central Florida



John Elia
Pennsylvania State
University



Emily Elrod
North Carolina
State University



Sean Freeland
West Virginia
University



Emily Garrido
Georgia State
University



Sidney Jennings
University of
Wisconsin-Madison



Stacy Jones
University of Texas
at Austin



Josh Karr
West Virginia
University



Pavneet Kaur Bharaj
Indiana University
Bloomington



Ash Kizer
Auburn University



Jinqing Liu
Indiana University



Fardowsa Mahdi
University of
North Texas



Phi Nguyen
University of
Missouri



Hector I. Nieves
Boston University



Sheila Orr
Michigan State
University



Ayse Ozturk
The Ohio State
University



Keri Richburg
Auburn University



Paula Santana
University of
Central Florida



Demet Yalman Ozen
Middle Tennessee
State University



Frederique Yova
North Carolina
State University

ELEMENTARY MATHEMATICS SPECIALIST SCHOLARSHIP

The AMTE Elementary Mathematics Specialist Scholarship program provides support to classroom teachers in their development as elementary mathematics specialists. Elementary mathematics specialists work as teachers, teacher leaders, or coaches and they support effective mathematics instruction and student learning at the classroom, school, district, or state levels. The EMS Scholarships are funded through the generosity of AMTE sponsor, the Maier Math Foundation (www.mathlearningcenter.org/). Each recipient of the scholarship receives funding of \$2000 to help support their coursework towards an elementary mathematics specialist certificate or recognized endorsement.



Taylor Pierce
St. Louis, Missouri



Christie Lee
Hillsboro, Oregon



Carolyn Anderson
Gurnee, Illinois



ORGANIZATIONAL CHART 2021

AMTE HEADQUARTERS

Financial Services Manager
Mary Beth Wallace

**Executive Director
(Governance, CFO, COO)**

Shari Stockero: 2020-2024

Graphic Design
Designotype Printers

Associate Vice-President
for Constitutions and
By-Laws
*Constitutions and By-Laws
Committee*

Barbara Swartz

Associate Vice-President
for Nominations and
Elections
*Nominations and Elections
Committee*

Jenny Bay-Williams

Finance Committee Chair

Finance Committee

Sarah Quebec Fuentes

ELECTED MEMBERS OF THE BOARD

(Elected Board members serve as liaisons to the various divisions.)

President
Megan Burton 2021-2023

Past President
Mike Steele 2021-2022

Secretary
Cynthia Taylor
2020-2023

At-Large
Enrique Galindo
2019-2022

At-Large
Farshid Safi
2021-2024

At-Large
Marrielle Myers
2020-2023

Treasurer
Sarah Quebec Fuentes
2019-2022

Membership Division

**Vice-President for
Membership**
Lisa Poling
2020-2023

Associate Vice-President
for Affiliates
*Affiliate Connections
Committee*
Hartono Tjoe

Associate Vice-President
for Membership
Temple Walkowiak

Associate Vice-President
for Awards
Awards Committee
Todd Abel

Professional Learning Division

**Vice-President for
Professional Learning**
Jennifer Suh
2020-2023

Associate Vice-President
for Conferences
Conferences Committee
Colleen Eddy

Associate Vice-President
for Annual
Conference Program
Conference Program Committee
Julie Amador (2022)
Rick Hudson (2021)
Jeremy Zerkowski (2023)

Associate Vice-President
for Professional Development
*Professional Development
for Members Committee*
Denise Polojac-Chenoweth

Associate Vice-President
for STaR Fellows Program
STaR Program Committee
Maria Fernandez

Associate Vice-President
for Technology
Technology Committee
Dawn Woods

Local Arrangements
Jeff Shih
Travis Olson

Publications Division

**Vice-President for
Publications**
Babette Benken
2021-2024

Associate Vice-President
for MTE Journal
(Editorial Panel Chair)
MTE Journal Editorial Panel
Matt Campbell

Associate Vice-President
for Connections!
Newsletter (Editor)
*Connections! Newsletter
Committee*
Susan Swars Auslander

Associate Vice-Presidents
for CITE Journal
(Co-Editors)
Ann Wheeler
Shannon Driskell

Associate Vice President
for Publications Review
Publications Review Committee

Advocacy, Equity, & Research Division

**Vice-President for
Advocacy, Equity, & Research**
Sarah Van Ingen Lauer
2019-2022

Associate Vice-President
for Advocacy
Emerging Issues Committee
Zandra de Araujo
Robert Wieman

Associate Vice-President
for Equity
Equity Committee
Carlos López Leiva
Crystal Kalinec-Craig

Associate Vice-President
for Research
Research Committee
Meghan Shaughnessy
Mary Candace Raygoza

Communications & Outreach Division

**Vice-President for
Communications & Outreach**
Dusty Jones
2019-2022

Associate Vice-President
for Communications
Steve Rhine

Associate Vice-President
for Sponsorship
Ray LaRochelle

Associate Vice-President
for Marketing
Sandi Cooper

Associate Vice-President
for STaR Fundraising
STaR Fundraising Committee
Jeff Wanko

