



A M T E 2 0 2 0 A N N U A L R E P O R T

T A B L E O F C O N T E N T S

Report from the President	1
President Elect	3
Executive Director & Headquarters	5
Constitution and By-Laws	7
Nominations and Elections	7
Elected Board Members	
Treasurer	9
Secretary	11
AMTE Contractual Services	11
Member-at-Large	12
Membership Division	13
Membership	13
Affiliates	14
Awards	14
Professional Learning Division	15
Annual Conference and Program	15
Program Committee	16
Professional Development	17
STaR Fellows Program	17
Technology	17
Publications Division	18
MTE Journal	18
Connections! Newsletter	19
CITE Journal	20
Publications Review	20
Advocacy, Equity, & Research Division	21
Advocacy	21
Equity	22
Research	22
Communications & Outreach Division	23
Communications	23
Sponsorship	24
Marketing	24
STaR Fundraising	24
2020 & 2021 Award Recipients	25
AMTE Organizational Structure 2020	Back Cover

REPORT FROM THE PRESIDENT



Michael D. Steele

President

University of Wisconsin-Milwaukee

Welcome to the 2020 AMTE Annual Report. The goal of this report is to better inform you, our membership, about the work of the Board of Directors and our dozens of volunteer committee members. It's my privilege to introduce this report by highlighting some of my own work over the past year. I encourage you to spend some time engaging with this report and reading about the work of our divisions and committees. AMTE's committees are tasked with carrying out aspects of the AMTE mission in support of mathematics teacher education and mathematics teacher educators.

A President's Role in Unprecedented Times

Last year's presidential message in the 2019 Annual Report is a stark reminder of how different our world is today than it was a year ago. As I wrote that message in December 2019, I was reflecting on what I had learned from travel and engagement with a diverse set of colleagues in my leadership role and looking forward to our first-ever Annual Conference in Phoenix, Arizona. Little did we know as we shook hands and hugged colleagues and friends as we left that meeting that so many facets of our personal and professional worlds were about to change.

I am extraordinarily proud of the work we have done as an organization in supporting mathematics teacher educators in this changing landscape. As universities and PreK-12 schools pivoted from in-person teaching to emergency remote learning, the AMTE Board of Directors came together to discuss how we could best support our professional community. In March, we moved swiftly to present a two-part webinar series focused on emergency remote instruction, which included discussions of content, pedagogy, and humanizing online teaching and learning. We supported the Online Mathematics Methods Task Force, which had been already collecting resources to disseminate, in making their work available early for our members. We curated a set of videos to be used in the service of mathematics teacher education efforts to support high-quality teaching. We continued past these immediate efforts to consider how we could continue to support the mathematics teacher education community through professional learning opportunities and began to reconceptualize our upcoming conference. I am incredibly proud of the work that AMTE has done in supporting our members in such a difficult time.

Leading a complex organization is an honor and a challenge. 2020 is a reminder that you don't quite know what exactly you're in for when you begin the work. As my presidency comes to a close, I find myself reflecting on the most important thing I have learned during this year. It wasn't about online mathematics teaching and learning, distance-based professional development, how to coordinate large teams, contract law, or any of the hundreds of other things I could put on such a list. Rather, it's the importance of humanizing leadership. The public health pandemic, the social injustice pandemic, and its wear and tear on us all individually and collectively reminded me daily that we are a group of humans with complex lives and needs, and that our need to give grace and space even as we do challenging things is an essential part of our work. I cannot claim to have always gotten this right, even this year, but it is my most significant piece of learning from the year just passed.

Building Bonds in the Professional Community

An important role of the President, in collaboration with the President-Elect and Executive Director, is to represent AMTE's interests in and collaborate with the broader mathematics education community. In that role, I was able this year to give presentations about AMTE's mission and goals at virtual meetings of the National Council of Teachers of Mathematics, NCSM Leadership in Mathematics Education, the School Science and Mathematics Association, and the American Mathematical Association of Two-Year Colleges. Shari, Megan, and I have represented AMTE at the Conference Board of Mathematical Sciences meetings, which bring together leaders from 18 different mathematics-affiliated professional associations to discuss common issues and initiatives. We have nurtured our relationship with the Mathematics Teacher Education Partnership and taken on the role of representing mathematics teacher education in the NSF-funded Get the Facts Out project. Both these efforts seek to strengthen the mathematics teacher education pipeline through recruitment, retention, and curricular strategies. Our work with these organizations has increased AMTE's visibility and standing as a critical partner in the mathematics education community.

Building a Stronger AMTE

In addition to building connections outward, we have worked in unique ways to strengthen our organization by looking inward this year. Guided by the voices of our own members, AMTE has taken to heart that we can improve the inclusiveness of our organization and better attend to providing spaces for our colleagues to learn, grow, and thrive as a part of AMTE. The Membership Task Force has worked over the past year to support AMTE in engaging a wider range of mathematics teacher educators with respect to role, institution, and background. AMTE understands that we are stronger as an organization when we are diverse, and in particular BIPOC mathematics teacher educators and MTEs not housed in larger university settings have been underrepresented in our membership and leadership. We are committed to building a stronger organization through careful and specific attention to our diversity.

The AMTE Board of Directors has also taken on a long-term planning process for the first time in the organization's history. In the past, the Board has identified strategic priorities each year to guide the organization's annual work. As we think more strategically about our organization's role and our goals, it has become necessary to move beyond annual planning processes. I'm pleased to present to the AMTE membership the 2020-2024 Long-Term Goals document as a companion to this annual report. This document identifies four long-term goals for the organization that will guide several years of work. Each year, the Board of Directors will identify a set of actions for the year that will advance the work of each of the goals. This document will provide a guiding vision for the work of the Board of Directors over time.

As I formally end my service to you as President, I want to thank you all for entrusting me with the care and leadership of our organization over the past two years. It has been the highlight of my professional career to serve AMTE in this capacity. My deepest thanks to the Board of Directors for their collaboration during these two years, and to Executive Director Shari Stockero and President-Elect Megan Burton for their partnership, vision, and friendship on this journey.



Mike Steele

President

PRESIDENT-ELECT



Megan Burton

President-Elect

Auburn University

"Many stories matter. Stories have been used to dispossess and to malign. But stories can also be used to empower, and to humanize. Stories can break the dignity of a people. But stories can also repair that broken dignity."

~ Chimamanda Ngozi Adichie, author

As I have served AMTE as President-Elect this past year, I have listened and learned from the stories. I am in awe of the amount of service, advocacy, and productivity that this volunteer organization completed during this unfathomable year. In Michael Steele's President-Elect message in the 2018 Annual Report, he asked, "Who are we as a mathematics teacher education community, and how do we support and sustain one another individually and collectively?" This question has resonated with me as I have listened to the stories of our membership: their work, their struggles, their successes, and their visions for AMTE. I am inspired by the stories and the ways AMTE has supported members, but also hear that we have much work to do in our organization and in mathematics teacher education. I believe this year has taken us closer to our goal, because it involved the voices and stories of many. I am thankful for the leadership and countless volunteer hours that have been dedicated over the years to grow this organization into a group that supports mathematics teacher educators and collaborates with organizations where our interests intersect. I look forward to our continued growth and the work ahead.

A Glimpse into the Story for AMTE 2020

In this role, much of my focus has been listening and learning from President Michael Steele, Executive Director Shari Stockero, the AMTE Board Members, various committee members, and the AMTE membership. There is so much good work being done in the many facets of AMTE. Some highlights are listed in this annual report. I am appreciative to those who volunteered for the *Get The Facts Out* initiative, which focuses on raising awareness of the positive aspects of being a mathematics teacher. I am also appreciative to Marrielle Meyers and Kristin Lesseig for serving with me on the 2021 Opening Session Planning Team and to the panelists for their dedication to the Opening Session for our first virtual AMTE Conference. I am thankful for those that served on various committees and other roles of AMTE service. As a Board representative for the Nominations and Elections Committee, I was inspired by the number of colleagues willing to step up and serve. I am thrilled to have Farshid Safi join the Board. I hope all those who were nominated will consider the openings for president-elect, treasurer, and board member at large that will be determined this year. Our organization needs members to serve in order to continue the important work we do.

I also want to thank those who offered professional development during this year through submissions to our publications, podcast, and webinars. As many of us shifted to online instruction due to COVID-19 and continued to grow and work to address issues of racial equity and justice, the ideas and support from AMTE and other sibling organizations were essential to me. Members' stories mattered as these two pandemics demanded action. AMTE's statement on systemic racism in June requires action on the part of us as individuals, within our communities, and as an organization. We have begun the work and will continue to keep these actions in both short- and long-term goals. It is imperative that we continue to share ideas and actions to ensure equity and social justice undergird the work of AMTE.

Our Conference Committee, under the leadership of Colleen Eddy, and Program Committee, under the leadership of Rick Hudson, made a midyear pivot and have tirelessly devoted time and energy to planning our first virtual conference. I also want to thank Steve Rhine for his work on this conference, and Mandy Jansen for her work publicizing the many offerings AMTE has provided this year. I don't think any of us imagined that we would be planning the 2021 conference this way. However, it provided an opportunity to reexamine our former practices, connect to new professionals who might not normally travel to a conference, and to explore new possibilities for our organization. The vision, energy and dedication of countless volunteers fostered many successes this year, including the 2021 AMTE Virtual Conference. Thanks to all who were a part of this.

Continuing the Story

At our last conference, we collected data from the membership to set long-term goals for our future. While this year has created many obstacles, the leadership has also focused on the feedback we received to create long range plans and prioritize some exciting changes. President Michael Steele will speak to our work in this area and goals for the upcoming year, but I do want to state the four long term goals below:

1. Provide resources and strategies for recruitment, retention, and diversification of the mathematics teacher pipeline.
2. Provide resources and strategies for recruitment, retention, and diversification of the mathematics teacher educator pipeline.
3. Engage mathematics teacher educators in opportunities designed to strengthen the research and research-based practices of mathematics teacher education, with a commitment to supporting understanding of how issues of social and racial justice undergird all of our work.
4. Develop systematic processes for studying progress towards and effectiveness of actionable items embedded in the long-term goals.

These long-term goals reflect the voices of AMTE members and will help us stay focused in the work and take actionable steps towards improving and growing as an organization. This year has been about resilience, reflection, and rethinking. Thanks to the stories shared by members in various capacities and the volunteers who work to make it happen. 2021 is filled with new opportunities for growth and positive change, because of what was learned, experienced, and shared. I believe we are ready to heed the call from the Opening Session. "Are You Ready to Reimagine Mathematics Teacher Education?" How will you help contribute to this reimagining in your own local community and within the AMTE community? I know I am ready, as I work alongside each of you, and continue to listen, learn, and act to improve mathematics teacher education.



Megan Burton
President-Elect

EXECUTIVE DIRECTOR



Shari Stockero

Executive Director

Michigan Technological University

Dear AMTE Colleagues and Friends:

I write this report as I am nearing the end of my first official year as the Executive Director of AMTE; this was after shadowing Tim Hendrix for about nine months prior to his departure. In typical Tim fashion, however, he graciously supported me in learning the many aspects of this position even after he officially left the role. I cannot thank him enough!

As the Executive Director, my primary role is to support the President, VPs, AVPs, and Board of Directors in fulfilling the mission and goals of the organization. In carrying out this role, I have had the privilege of interacting with many of the outstanding individuals who volunteer their time and expertise to allow our organization to meet the needs of our members. This is truly one of the most rewarding aspects of the role!

I also serve as the legal and fiscal agent for AMTE and provide a headquarters for the organization. Thus, any official documentation from the organization comes through the headquarters, and the Executive Director is the signatory in any contractual agreement that the organization makes with another entity. This is probably not the most exciting aspect of the job, but it is certainly necessary for the functioning of our organization.

To provide a sense of what I do in my day-to-day work, here are some examples of the tasks that I do on a regular basis:

- Send emails to the AMTE membership about important announcements, deadlines, and opportunities
- Respond to members' requests for assistance with a variety of issues
- Meet weekly with the President and President-Elect to discuss AMTE activities, priorities, and issues
- Meet weekly with the AVP for Communications to discuss updates and issues associated with the website
- Work with our AMTE Treasurer and AMTE Financial Services Manager to monitor AMTE finances and budget
- Advertise and facilitate webinars sponsored by our Professional Learning Division
- Organize and help lead monthly Board of Directors meetings online
- Attend Conference Board of Mathematical Sciences (CBMS) meetings twice annually
- Plan and lead our Annual Board Retreat in the fall
- Work closely with the Conference Committee and Conference Program Committee to support their work

I have also taken on many additional activities—both planned and unplanned—in 2020. Given the year that it's been, I certainly was not fully aware of what I was signing up for, but regardless, I am pleased that I've been able to support AMTE in a variety of initiatives.

1. At the start of the COVID-19 pandemic in the spring, I worked closely with numerous members of the AMTE leadership—most notably members of the Professional Learning Division, Online Mathematics Methods Task Force, the President, President-Elect and Board—to make available to our members a variety of resources related to online instruction. I hope that many of you have found time to access and use these great resources. If not, they are still available on our website!

2. Pivoting to a virtual conference has truly been a community effort, and supporting and coordinating this effort has been a significant task that I have been happy to support. Thanks to the dedication and thoughtfulness of many, many people within the organization, we are confident that we will be able to provide a quality professional development experience for our members at the 2021 Annual Conference.

3. I was privileged to have the opportunity to participate in the 2020 STaR Institute that took place virtually in June. Even though the participants were unable to gather in Park City as they have in the past, it was fantastic to meet some of the newest members of our organization and learn about the exciting work that they are engaged in and the ideas they are thinking about. It was an energizing week for sure!

4. The board undertook long term strategic planning for the first time in the organization's history. This process began by soliciting and consolidating feedback from our members and culminated in a report that will be shared at the annual meeting. This document will guide AMTE's efforts over the next several years and allow us to focus on issues that were identified as important to our members.

5. I worked closely with members of the Get the Facts Out project leadership team to allow AMTE to become a partner in their important teacher recruitment efforts. Our GFO task force, chaired by Jean Lee, is now working to begin to get information about the project out to our members. Look for more information and opportunities to engage in the work soon!

6. A less visible (and perhaps less exciting) part of my work has been updating the AMTE database and archives to allow us to better preserve information about our organization for the long-term. Over the course of 2020, I have created an archive of members who have served in any sort of leadership role (Board member, VP, AVP, committee member) since the organization's restructuring in 2017. I am also working with the VPs and AVPs to create an archive of key committee documents. It is my hope that this archiving will continue long into the future.

I cannot express enough gratitude to the many members of AMTE who have supported the work of the organization this year, especially as many of them were struggling to adapt to the challenges that we have all faced in our work, family, and daily lives. Although I wish that I could mention everyone, I want to give a shout out to the following individuals who were critical to AMTE's work this year, particularly in activities related to reconsidering our work in light of the pandemic: AVP for Conferences Colleen Eddy; AVP for Conference Program Rick Hudson; VP for Professional Learning Jennifer Suh; and AVP for Professional Development Bill DeLeeuw. I'd also like to thank AVP for Communications Steve Rhine for keeping our website updated and Mandy Jansen who did an outstanding job of increasing our social media presence. It is volunteers such as these who are at the heart of our organization. I encourage all of our members—new and more experienced—to consider how you might use your talents to support the work of our organization. We are always looking for volunteers.

Of course, President Mike Steele and President-Elect Megan Burton were both central to the work of AMTE this past year. I am grateful that I was able to work alongside both of these amazing colleagues as we navigated many unknowns. In our numerous interactions throughout the year, it was always apparent that these leaders had the best interests of the organization and its members at heart. They care deeply about AMTE and are thoughtfully considering ways to make the organization have even more value to all of its members.

It has been my privilege to serve AMTE in 2020 and I look forward to the challenges and opportunities of 2021. I encourage you to take a few minutes read the 2020 Annual Report to learn more about the work of our organization. As you do so, I encourage you to consider ways that you might wish to join the effort.

Respectfully submitted,



Shari Stockero

AMTE Executive Director

CONSTITUTION AND BY-LAWS

The committee reviewed the Constitution and Bylaws to ensure adherence for our upcoming virtual conference and annual business meeting. No concerns were found, but recommendations were made that allow for broader and equitable participation for all members access to the business meeting (whether it is held virtually or in person).

Constitutions and By-Laws Connections Committee

Margaret Mohr-Schroeder, *University of Kentucky*; Wendy Smith, *University of Nebraska-Lincoln*; Barbara Swartz, *West Chester University*; Kevin LoPresto, *Francis Marion University*; Jason Silverman, *Drexel University*; Khaled Alshehri, *Imam Abdulrahman Bin Faisal University*



Barbara Swartz

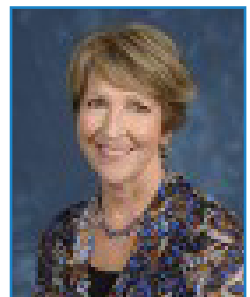
AVP for for Constitutions and By-Laws
West Chester University

NOMINATIONS AND ELECTIONS

In 2020, there was an election for one member-at-large position on the AMTE Board of Directors. The committee reviewed 15 very strong applicants, and selected two candidates to run in the election. Farshid Safi was elected.

The committee reviewed dates and processes. The following decisions or ideas were made:

- Accept nominations through June 15 (previously this had been June 1).
- Include word limits on the Candidate Statements.
- Review and revise, as needed, the nomination form. Slight revisions were made.
- Review and revise, as needed, the application form. This included adding word limits to the 2021 Application, revising the short answer sections, and including a statement about our seeking of diversity on the Board. A draft was created to be finalized in 2021.
- Begin early with the recruitment and awareness of the board positions in 2021.



Jennifer Bay-Williams

AVP for for Nominations and Elections
University of Louisville

Nominations and Elections Committee

Angela Broadus, *Benedictine College*; Natasha Gerstenschlager, *Western Kentucky University*; Gwen Lloyd, *Penn State University*; Randy Philipp, *San Diego State University*; Brenda Strassfeld, *Touro College*; and Megan Burton, *Auburn University*

TREASURER

Liaison to Communications & Outreach Division

The Treasurer manages and documents all of the income (e.g., membership fees, donations, sponsorships, and conference registration) and expenses (e.g., invoices and travel reimbursements) of the organization. The Treasurer completes these responsibilities in collaboration with AMTE's Financial Services Manager, Executive Director, Board, and Finance Committee.



Sarah Quebec Fuentes

Treasurer

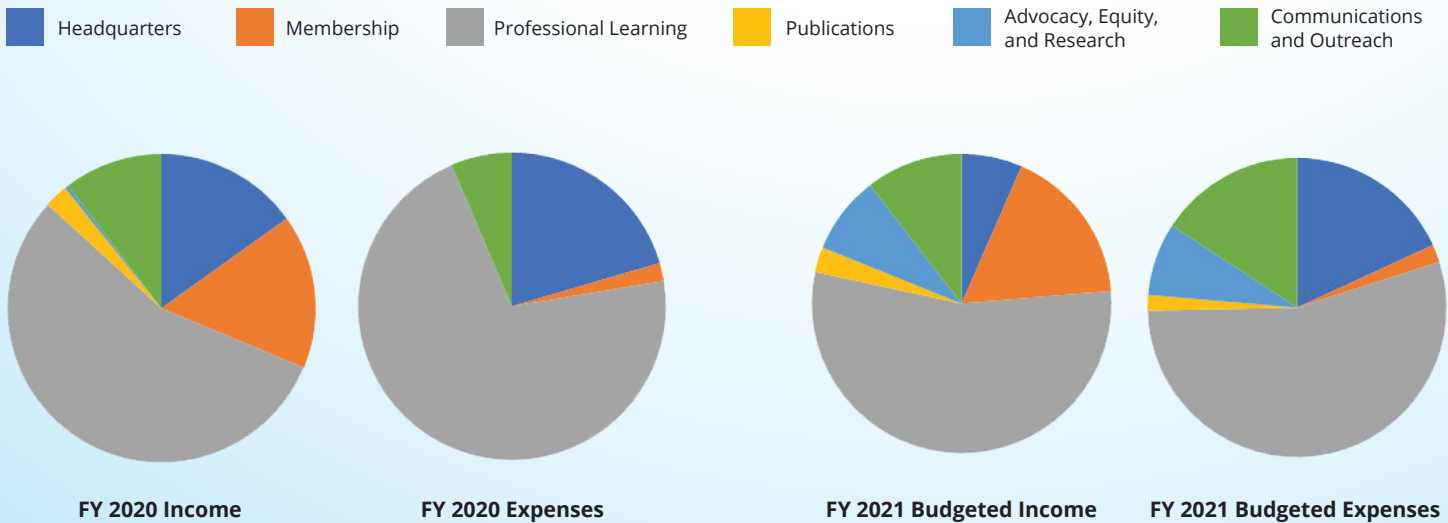
Texas Christian University

FINANCE COMMITTEE

The Finance Committee members include the President, the President-elect or Immediate Past-President, the Executive Director, the Treasurer, a member of AMTE who is external to the Board of Directors, and the Financial Services Manager. The purpose of the Finance Committee is to oversee the financial health of AMTE. The Finance Committee develops and monitors short- and long-term plans for the financial health of the AMTE organization across the activities of the divisions and headquarters.

For Fiscal Year (FY) 2020, the organization's income exceeded its expenses. Of the monies in the bank at the end of FY 2020, some is earmarked for special accounts (e.g., EMS Scholarship, NTLI Fellowship Award, STaR Program, and Susan Gay Scholarship), membership reserves, and rollover into the FY 2021 budget. This leaves \$205,772.37 in deep reserves, increasing this amount from FY 2019 and meeting a goal set for FY 2020.

	<i>as of 6/30/2019</i>	<i>as of 6/30/2020</i>
Bank Accounts Total	\$365,270.38	\$428,140.18
Special Accounts Total	\$102,520.92	\$150,610.18
Membership Reserves	\$92,932.00	\$35,392.00
For FY 2020 Operating Budget	\$80,790.00	\$36,365.00
Deep Reserves	\$89,127.46	\$205,772.37



FY 2020 was the first year under the new budget structure organized by division. Using the final FY 2020 data, the Board planned the FY 2021 budget to more accurately reflect our income and expenses. Given the financial uncertainty created by the COVID-19 pandemic, we also made about \$40,000 in cuts to ensure the long-term stability of AMTE.

Divisions	FY 2020 Budget	FY 2020 7/1/2019 - 6/30/2020	FY 2021 Budget
HEADQUARTERS (HQ)			
HQ Income Subtotal	\$74,490.00	\$74,033.17	\$32,545.00 *
HQ Expenses Subtotal	\$118,940.00	\$76,047.39	\$91,540.00
MEMBERSHIP (M)			
M Income Subtotal	\$78,200.00	\$79,070.69	\$85,000.00
M Expenses Subtotal	\$9,750.00	\$7,027.48	\$9,705.00
PROFESSIONAL LEARNING (PL)			
PL Income Subtotal	\$266,200.00	\$272,300.43	\$272,000.00
PL Expenses Subtotal	\$275,700.00	\$264,873.08	\$275,800.00
PUBLICATIONS (PUB)			
PUB Income Subtotal	\$13,500.00	\$12,075.62	\$13,500.00
PUB Expenses Subtotal	\$10,500.00	\$0.00	\$8,500.00
ADVOCACY, EQUITY, AND RESEARCH (AER)			
AER Income Subtotal	\$2,000.00	\$1,400.00	\$41,800.00 **
AER Expenses Subtotal	\$0.00	\$0.00	\$39,800.00 **
COMMUNICATIONS AND OUTREACH (CO)			
CO Income Subtotal	\$52,000.00	\$50,655.10	\$52,000.00
CO Expenses Subtotal	\$79,500.00	\$23,845.02	\$71,500.00
Budget Income Total	\$495,390.00	\$489,535.01	\$496,845.00
Budget Expenses Total	\$495,390.00	\$371,792.97	\$496,845.00

*Reflects the approximate \$40,000 budget reduction in FY 2021.

**Includes Get the Facts Out grant funding, a new initiative for AMTE, that supports mathematics teacher recruitment.

Goals for the upcoming year are to (1) continue to increase the amount of money in deep reserves, (2) budget responsibly, especially in these uncertain times, and (3) make fiscal decisions that reflect the mission and goals of AMTE.

Finance Committee

Sarah Quebec Fuentes, *Texas Christian University*; Mike Steele, *University of Wisconsin-Milwaukee*; Megan Burton, *Auburn University*; Shari Stockero, *Michigan Technological University*; Travis Miller, *University of Indianapolis*; Mary Beth Wallace, AMTE Financial Services Manager



SECRETARY

Liaison to Membership Division

As secretary of the AMTE Board of Directors, my role is to document the work of the board through recording minutes of regular board meetings or any special called meetings. In addition, I maintain a list of board actions made through motions during board meetings or via e-mail communication. I serve as board liaison to the Membership Division, which includes the Awards Committee, Affiliates Committee, and Membership Committee. In this role, I participate in meetings of these committees during the conference and periodically throughout the year.

Cynthia Taylor

Secretary

Millersville University of Pennsylvania

AMTE CONTRACTUAL SERVICES

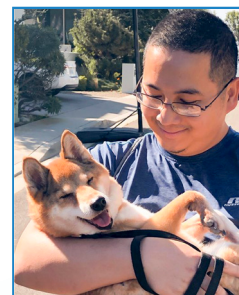
AMTE contracts with several individuals and businesses to provide services that are essential for our organization to operate. We retained legal services with the Tennenbaum Law group to help us negotiate with the conference hotel. We work with tax accountant Ryan Nemitz at Mitchell & Nemitz, PA. for tax preparation. We work with Mercer Consumer Services for the various types of insurance that are required of a non-profit association: officer's liability, event liability, and event cancellation insurances. Overlooking all of our financial needs is our AMTE Financial Services Manager, Mary Beth Wallace, an independent contractor who works with our Treasurer and for the organization to maintain our financial records, process payments, and other day-to-day financial operations.

Every year, our media presence is supported by the outstanding work of AMTE Graphics Designer Tony Nguyen. He designs the imagery for our conference theme, its program book cover and other graphic assets. He also designs the Annual Reports and this year's Long-term Goals document. Tony has worked for the organization since 2009 when he was an undergraduate at San Diego State University majoring in graphic design. Recently, Tony went back to school to earn a Master of Science: Orthotics & Prosthetics degree from California State University, Dominguez Hills, and is currently doing his prosthetic residency at the San Diego VA.



Mary Beth Wallace

Financial Services Manager



Tony Nguyen

AMTE Admin / Graphic Design

MEMBERSHIP REPORT

Our AMTE membership remains relatively steady from where it has been in the past. As of February 1, 2021, our active membership is 1010, up a bit from 984 at about the same time last year. This includes 772 regular members, 209 student members, and 29 emeritus members.

Please encourage your colleagues who have been AMTE members in the past to renew their memberships. Also look for opportunities to encourage new colleagues, including your graduate students, to join our organization. This annual report could be a great advertising and recruitment tool to help explain the benefits of joining AMTE.

MEMBER-AT-LARGE

Liaison to Publications Division

In my role as a board member-at-large, I attended monthly board meetings, the annual board retreat, served as a liaison for the Publications division, and worked on an ad hoc committee to plan the opening plenary for the 2021 annual conference. I regularly contributed to agenda items during our monthly meetings to ensure that we threaded equity throughout our work as it is a critical component of our organization's long-term goals. As a liaison to the publications committee, I reviewed for *Mathematics Teacher Educator*, served on the MTE Editorial panel, and assisted the division leadership in developing a Special Call for the Connections newsletter focused on including diverse voices from the field in a conversation about virtual field placements. I also worked with the President-elect and a committee to identify speakers for our opening plenary, craft a theme for the panel, and organize the session's details. I remain thankful to the AMTE community and my colleagues for entrusting me with this valuable role. And I look forward to continuing to support the mission and long-term goals of the organization.



Marrielle Myers

Board Member-At-Large
Kennesaw State University

MEMBER-AT-LARGE

Liaison to Advocacy, Equity, & Research Division (AER)

In my role as an At-Large Board member, I attend the AMTE Board meetings and serve as the Board Liaison to the Advocacy, Equity, and Research (AER) Division. I participate in the Division meetings to support the work of each committee. I work closely with the VP and AVPs to plan initiatives to support the mission and strategic priorities of AMTE. Along with VP Sarah van Ingen Lauer, I update the Board on Division activities. For 2020, we intentionally and successfully renamed the Emerging Issues Committee to the Advocacy Committee to align more with the purpose and goals of the Committee and Division. In my position as Board Liaison, I continue to support and advocate for equity, social and racial justice as a priority within AMTE.



Christa Jackson

Board Member-At-Large
Iowa State University

MEMBER-AT-LARGE

Liaison to Professional Learning

As an At-Large Board member, I support the mission and strategic priorities of AMTE by serving as liaison to the Professional Learning Division. I participate in Division and Committee meetings to share updates from the Board, and to learn about and support the work of the committees within the division. Along with VP Jennifer Suh, I update the Board on Division activities and accomplishments, and provide guidance on Board initiatives and procedures within the Division. Some highlights of my work this year included the opportunity to work with the Conference Committee as they had to plan for a new way to offer the AMTE conference virtually; the opportunity to work with the Professional Learning Division as various committees sought for creative ways to support the membership this year; and the opportunity to work with members and the AMTE leadership as new strategic priorities were identified for our organization.



Enrique Galindo

Board Member-At-Large
Indiana University

MEMBERSHIP



Lisa Poling

Vice President for Membership
Appalachian State University

The Membership Division includes the Affiliates, Awards, and Membership Committees that together support the members of AMTE. Each of the committees provides support uniquely defined by the needs of the membership. This year the Affiliate Committee had a leadership change as Ziv Feldman stepped away and Hartono Tjoe assumed the position as Associate Vice President (AVP). Hartono has done a fantastic job of making sure that the state affiliates were maintained throughout the transition and continues to consider ways to support mathematics teacher educators at the local level. The Awards Committee, led by AVP Amanda Gantt-Sawyer, supported the goals of the Membership Division by selecting outstanding AMTE members for various awards. As part of their annual work, the Awards Committee, working with the Advocacy Committee, defined and selected the recipient for the inaugural Karen D. King Advocacy Award. Please visit the awards page at <https://amte.net/about/awards> and consider nominating a colleague for one of the annual awards. As AVP for Membership, Temple Walkowiak was an active member of the Membership Task Force which presented their recommendations during the 2020 Fall Board Retreat. The suggestions provided by the task force will guide future work related to member goals. Thank you to the Membership Task Force, Amanda Gantt-Sawyer (Awards AVP), Ziv Feldman and Hartono Tjoe (Affiliates AVPs), Temple Walkowiak (Membership AVP), and all of the committee members for their commitment and service to the success of AMTE.

AFFILIATES

AMTE is home to 24 state affiliates, along with one non-state, non-regional affiliate, Women and Mathematics Education (WME). The Affiliate Connections Committee, through its publications in *Connections*' "Affiliates' Corner," promotes (with support from the *Connections* Newsletter Editorial Panel) the continued success of all AMTE affiliates and supports local events and endeavors as they pertain to current issues relevant to mathematics teacher educators. The Affiliate Connections Committee arranges periodic meetings among its members and engages AMTE affiliates, facilitating regular conversations designed to strengthen collaboration between AMTE and its affiliates. The Affiliate Connections Committee will continue to promote the success stories of existing affiliates in order to encourage greater participation among AMTE members and their state affiliates, as well as to foster the creation of AMTE affiliates in those regions where none have yet been established.

Affiliate Connections Committee

Hartono Tjoe, *Pennsylvania State University, Berks*; Dana Franz, *Mississippi State University*; Torrey Kulow, *Portland State University*; Diana Moss, *University of Nevada, Reno*; Jennifer Fillingim, *Madison County Schools*



Hartono Tjoe

Associate Vice-President
for Affiliates
*Pennsylvania State
University, Berks*

MEMBERSHIP

The work of the Membership Task Force continued in 2020 and concluded in October upon submission of a report to the AMTE Board of Directors. The report represents the Task Force's work that began in September 2019 to identify action steps to diversify and broaden AMTE's membership, specifically in respect to stakeholder role. During 2020, the Task Force conducted a survey of AMTE members and non-members to better understand their perspectives on AMTE, its benefits, and the annual conference. The Task Force utilized the survey results, as well as collective discussions at monthly meetings, to generate the report. The report of the Task Force includes implications and recommendations in four key areas, with an emphasis on leveraging the organization's existing strengths: (1) diversifying membership; (2) understanding impediments to attending the Annual Conference; (3) increasing engagement and involvement in AMTE beyond the Annual Conference; and (4) being intentional in mentoring and interactions.

The AVP for Membership will act on target recommendations from the Task Force. One such example is already underway in the form of Community Circles at the Annual Conference. The AVP for Membership is collaborating with the Professional Learning Division to execute the inclusion of Community Circles, a mechanism for building and nurturing our professional community. In late November 2020, AMTE members were surveyed about their interest in Community Circles; the survey results will inform the topics/groups for virtual Community Circles at the 2021 Annual Conference with the plan to extend Community Circles to future years at the Annual Conference. The goal is for conference attendees to participate in Community Circles (C²) where they have the opportunity to chat informally with colleagues who share something in common professionally (e.g., interest, context), while also getting to know each other a little better. Beyond the implementation of Community Circles, additional recommendations from the Task Force will be targeted that focus on diversifying membership and improving access to and awareness of AMTE and its benefits.

Membership Task Force

Heather Howell, *ETS*; Naomi Jessup, *Georgia State University*; Courtney Koestler, *Ohio University*; Josh Males, *Lincoln Public Schools*; Priya V. Prasad, *University of Texas at San Antonio*; Lisa Poling (Chair), *Appalachian State University*; Nicole Rigelman, *Portland State University*; Michelle Stephan, *University of North Carolina – Charlotte*; Temple Walkowiak, *North Carolina State University*



Temple Walkowiak

Associate Vice-President
for Membership
*North Carolina State
University*

AWARDS

In 2020, the AMTE Awards Committee expanded the awards offered by AMTE to help celebrate mathematics education advocacy, selected individuals for various honors within the organization, and made changes to our Susan Gay Conference Travel Scholarship to account for the virtual format of this year's conference.

First, to celebrate Karen D. King's substantial contribution to mathematics education advocacy, the AMTE's Excellence in Advocacy Award was created in her honor. The Karen D. King Excellence in Advocacy Award is intended to recognize a colleague for a unique contribution in advocacy that has made a significant and lasting contribution to mathematics teacher education, directly and indirectly. Dorothy Y. White of University of Georgia was selected as the first recipient of this award.

The Awards Committee also evaluated and selected candidates for all other AMTE awards. The Excellence in Teaching in Mathematics Teacher Education Award went to W. Gary Martin of Auburn University. Lynsey Gibbons of Boston University was selected for Early Career Award, and the Elementary Mathematics Specialists Scholarships went to Nicole Williams, Dana Hartzell, and Jessica Jung. Finally, Susan Gay Conference Travel Scholarships were able to be expanded to support virtual registration for 31 graduate students to attend this year's conference.

2020 has been a hard year for many, and we were proud to support and honor all of these wonderful members of our mathematics education community.

Awards Committee

Allyson Hallman-Thrasher, *Ohio University*; Amanda Sawyer, *James Madison University*; Todd Abel, *University of Central Arkansas*; Carrie Lee, *East Carolina University*; Margaret Rathouz, *University of Michigan, Dearborn*; Pavneet Bharaj, *Indiana University Bloomington*



Amanda Sawyer

Associate Vice-President
for Awards
James Madison University

PROFESSIONAL LEARNING



Jennifer Suh

Vice President for Professional Learning
George Mason University

The last time our members were together face to face was at the 2020 Annual Conference in Phoenix, AZ. Then the pandemic started, our world changed, and we all turned to remote learning. As our communities struggled to deliver essential services from food to education to health care, AMTE mobilized our professional development committee to offer webinars to support mathematics teachers and teacher educators with strategies for teaching online. Through our AMTE Rapid Response initiatives, we received member-created tips for online teaching that our Technology Committee and board quickly vetted to provide additional resources. As the new Vice President of Professional Learning, I was so grateful for our AMTE community who responded so quickly with care and emotional support for all our mathematics teacher educators in this time of need.

This past summer, I had the pleasure of supporting the virtual program for our wonderful 2020 STaR fellows who formed meaningful research and teaching interest groups. As the Program Committee and Conference Committee look ahead and plan for the first virtual conference for the 2021 Annual Conference, we also celebrate a very special milestone of hosting the 25th AMTE Annual meeting. As an organization, we recognize that AMTE is more than an entity that offers MTEs professional learning but serves as a place where MTEs can network and support one another in these challenging times. AMTE is more than just a professional organization but a place where we get collegial support and fuel for our work. With this in mind, the board, the program and conference committees decided on hosting the virtual conference over two weeks to provide many more opportunities to network, learn and form community circles. Enrique Galindo, board liaison for this division, and I are excited to see the Professional Learning Division continue to provide our members meaningful professional offerings through webinars, technology resources and networking opportunities in the coming years.

ANNUAL CONFERENCE

The conference committee began 2020 by completing its first year as a functioning committee under the leadership of Trena Wilkerson, AVP of Conferences at the AMTE Annual Conference in Phoenix, AZ and transitioned to Colleen Eddy as AVP of Conferences with initial plans for the 25th Annual conference to be held in Orlando, FL. COVID-19 disrupted those plans and in late summer AMTE leadership made the decision to transition to a virtual conference. The Conference Committee immediately began brainstorming and planning for the 25th Annual Conference to be virtual. This includes social media, preparing social events and networking opportunities, working with Rick Hudson, AVP of Program Committee, on the attendee side of the conference which includes attendee experience at sessions which will be held on Zoom and the poster session to be hosted on Flipgrid. With leadership by Temple Walkowiak, AVP of Membership, we will have Community Circles with the membership letting us know which they want to be created.

Conferences Committee

Colleen Eddy, *University of North Texas*; Suzanne Harper, *Miami University*; Lateefah Id-Deen, *Kennesaw State University*; Julie James, *University of Mississippi*; Ray LaRochelle, *University of Delaware*; Trena Wilkerson, *Baylor University*



Colleen Eddy

Associate Vice-President
for Conferences
University of North Texas

PROGRAM COMMITTEE

The 2021 Annual Conference will mark the 25th annual meeting of AMTE, and it will be the first time that AMTE will hold a conference virtually. The virtual conference will welcome more than 600 registered participants. To prepare for the conference, the 2021 Annual Conference Program Committee reviewed and revised the Call for Proposals and crafted new Review Criteria that were used to evaluate proposed sessions. The Committee worked with All Academic to establish the online submission website for the 2021 Conference. The Call for Proposals was released in March 2020, and the submission website opened on April 1, 2020.

During the submission period from April 1 through May 26, 2020, the Committee monitored submissions to ensure that all proposals met the expectations for submission and were ready for review. Each member of the committee led the review process for one of the nine strands. This process included the assigning of volunteers for review, ranking strand proposals, and making recommendations for acceptance.

The Program Committee led 192 AMTE volunteers to conduct proposal reviews. The Committee would like to thank all of the reviewers and express our special appreciation to reviewers who submitted reviews on time. The conference schedule was finalized in November 2020. During December and January, Committee leaders supported the creation of the print program and provided information to speakers to prepare for the annual meeting.

In total, 419 proposals were submitted for review, and 231 of those proposals were accepted. The final program is comprised of

- 136 individual presentations, discussion sessions, extended sessions, and symposia;
- 63 brief reports, organized into 21 thematic sessions;
- 28 posters, organized into 1 asynchronous session;
- 9 invited presentations;
- 3 award-winner sessions; and
- 3 sessions presented by AMTE sponsors.

The acceptance rate of 55.1% is similar to previous conferences. We are pleased with the quality and number of presentations on the program. Although the shift to a virtual conference caused many new challenges, we are looking forward to the great sessions that are planned. The following table displays statistics from past AMTE annual conferences to put this year's conference into some organizational context. This year's program has 173 sessions and includes 442 speakers.



Rick Hudson

2021 Associate
Vice-President for
Conference Programs
*University of Southern
Indiana*



**AnnaMarie
Connor**

2020 Conference Program
Chair
University of Georgia



Julie Amador

2022 Conference Program
Chair
University of Idaho

Year of Conference	Total Proposals Submitted	Accepted Proposals	Sessions on the Program	Presenters at Conference	Proposal Reviewers
2021	419	55.1%	174	448	193
2020	426	62.0%	185	435	151
2019	451	60.5%	217	493	160
2018	444	49.8%	166	445	137
2017	452	58.6%	201	494	142
2016	464	49.8%	190	483	141
2015	470	44.0%	197	463	161
2014	407	56.7%	205	429	134
2013	395	47.0%	196	385	217

Annual Conference Program Committee

Rick Hudson, *University of Southern Indiana*; AnnaMarie Connor, *University of Georgia*; Julie Amador, *University of Idaho*; Jane Wilburne, *Pennsylvania State University, Harrisburg*; Tommy Hodges, *University of South Carolina*; Mary Enderson, *Old Dominion University*; Jeremy Zerkowski, *University of Alabama*; Kelly Costner, *Winthrop University*; Rebekah Elliott, *Oregon State University*; Carlos Nico Gomez, *University of Texas*; Jennifer Ward, *Kennesaw State University*; Robert Powers, *Northern Colorado*; Michelle Cirillo, *University of Delaware*; Wendy Smith, *University of Nebraska*; Nirmala Naresh, *University of North Texas*

PROFESSIONAL DEVELOPMENT

The Professional Development Committee provides ongoing professional development through webinar offerings and other opportunities. We hope that AMTE members appreciate the tireless volunteer work of the nearly 40 members of the committees of the professional learning division. During 2020, the AMTE Professional Development Committee also worked to serve the AMTE membership in three specific areas.

First, we organized and offered webinars for the AMTE membership during the 2020 program year:

- **The Current Status of Novice Mathematics Teachers: Findings from the 2018 NSSME+** (Kristen Malzahn, Horizon Research, Inc.)
- **Designing and Implementing Equitable K-14 Mathematics Pathways** (Diane Briars, in partner with the AMTE affiliate in PA)
- **COVID Rapid Relief: Synchronous Online Instruction—Special Two-Part Webinar**
 - **Part 1: Engaging Students Online with Zoom** (Kathleen Pitvorec & Mary Jo Tavormina)
 - **Part 2: Synchronous Online Teaching Strategies** (Theresa Elvira Wills)
- **COVID Rapid Relief: Asynchronous Online Instruction—Special Two-Part Webinar**
 - **Part 1: Online Content Delivery: Lessons Learned from Studying Flipped Instruction** (Zandra De Araujo)
 - **Part 2: Asynchronous online instruction: Triage in the era of COVID19** (Jennifer Chauvot, Chrystal Dean, Stephen Pape, and Jason Silverman)
- **Bringing together both community and STEM connections in PSTs' mathematics teaching** (AMTE's National Technology Leadership Initiative Fellowship winners 2020: Frances K. Harper, Zachary Stumbo, and Nicholas Kim).
- **Learning to Teach Mathematics in the Midst of a Pandemic: Voices of Stakeholders** (Cara Haines, Michelle Cirillo, John Staley, Farshid Safi, Jonathan Wray, Jaeden Ayala (PST), and Erin Altier (PST)).

Remember that video recordings of these webinars are available on the AMTE website at <https://amte.net/webinars>. We encourage you to take advantage of these and previous webinars as great professional learning resources.

Second, we continued work towards furthering our conference Manuscript Review Group (MRG) initiative that premiered at the 2019 annual AMTE conference. The MRG, developed in partnership with the STaR program, supports AMTE members who may not have had the opportunity to participate in MRGs by providing a safe and encouraging environment to receive feedback on a manuscript. After a successful implementation of the manuscript review groups at the 2020 conference, the PD committee further developed the initiative for the 2021 conference. During the 2021 conference we plan to hold MRGs virtually, just like the rest of the conference.

Finally, we are working to improve and adapt our annual conference session "I Am New to Mathematics Teacher Education: Realities of Teaching, Scholarship, and Service" to the virtual format and to update it for our current circumstances. We are excited about this work and continue to strive to improve these and other initiatives to best serve the AMTE membership by providing opportunities for professional learning and growth.

Professional Development for Members Committee

Bill DeLeeuw, *Valdosta State University*; Elizabeth Hughes, *University of Northern Iowa*; Kristen Bieda, *Michigan State University*; Denise Chenoweth, *University of South Florida*; Johnna Bolyard, *West Virginia University*; Ruby Ellis, *University of Missouri*



Bill DeLeeuw

Associate Vice-President for Professional Development
Valdosta State University

STAR FELLOWS PROGRAM

The STaR program, led by Marta Civil and Beth Herbel-Eisenmann, met virtually in June 2020. Twenty-eight enthusiastic STaR Fellows engaged in rich discussions about research and practice in mathematics teacher education, networked, and shared experiences about being an early career faculty member during this pandemic. We are hoping to meet in Park City, Utah, this coming summer for a 3-day follow-up with this amazing cohort of STaR Fellows.

STaR Program Committee

Beth Herbel-Eisenmann, *Michigan State University*; Marta Civil, *University of Arizona*; Maria Fernandez, *Florida International University*; Rebecca Judith Quander, *University of Houston Downtown*; Mathew Felton-Koestler, *Ohio University*



Beth Herbel-Eisenmann

Co-Associate Vice-President for STaR Fellows Program
Michigan State University



Marta Civil

Co-Associate Vice-President for STaR Fellows Program
University of Arizona

TECHNOLOGY

The Technology Committee is dedicated to providing our members with strategies, policies, activities and increased awareness of improving the integration of technology in mathematics education. This year as COVID-19 impacted all of us, the Technology Committee worked to vet contributions from our members on tips for online teaching through our AMTE Rapid Response initiatives. The committee also reviewed submissions and made a recommendation for the NTIL award.

Technology Committee

John Somers, *University of Indianapolis*; Amanda Thomas, *University of Nebraska-Lincoln*; Dawn Woods, *Oakland University*; Michael Todd Edwards, *Miami University*; David Glassmeyer, *Kennesaw State University*; Erin Krupa, *North Carolina State University*



Amanda Thomas

Associate Vice-President for Technology
University of Nebraska - Lincoln

PUBLICATIONS



Babette Benken

Vice-President for Publications
California State University, Long Beach

A general goal of this division is to provide quality publications to the membership that promote the goals of AMTE and to increase the visibility of our publications to a broader audience. The Publications Division consists of the three publications of AMTE, *Mathematics Teacher Educator* (MTE), *Contemporary Issues in Technology and Teacher Education -Mathematics* (CITE-Math) and *Connections* (newsletter), along with our Publications Review Committee. Our blind peer-review journals publish quality manuscripts focused on the needs and interests of our membership and the greater mathematics teacher education community. We provide a session at every AMTE Annual Conference to help authors learn about each publication and develop a manuscript for submission to our publications. The editors are also willing to work with you prior to your submission to answer any questions you may have about the submission process and to provide some quick, initial feedback on your manuscript or idea. All of the editors and members of the respective editorial panels are a hardworking group of dedicated people who volunteer their time. Information and links for each publication/committee are posted on our Publications page on the AMTE website.

The Publications Review Committee (PRC) helps to facilitate the review process for proposals for other types of publications submitted to AMTE. The proposal form is on the Publications web page and includes the directions on how and what to submit. This form is for the publication of books, monographs, resources, etc. that the PRC will consider and is not for journal or newsletter submissions; those types of submissions will continue to go directly to the publication and their respective guidelines should be followed. All recommendations made by the PRC will go to the Vice President for Publications, and eventually to the AMTE Board for a final vote and approval. The VP of the Division is also the overarching Series Editor for the AMTE professional books and monographs, published by Information Age Publishing (IAP), George Johnson, President. This past year we published Volume 4 in our AMTE Professional Book Series, entitled *The Mathematics Teacher Education Partnership: The Power of a Networked Improvement Community to Transform Secondary Mathematics Teacher Preparation*. The Division is currently seeking proposals for Volume 5 (*Reflection on Past, Present and Future: Paving the Way for the Future of Mathematics Teacher Education*), which will be a handbook for mathematics teacher education that will help to move the field forward; tentative publication date is January 2022. The Division will also publish new materials to support the AMTE *Standards for Preparing Teachers of Mathematics* in 2021.

MATHEMATICS TEACHER EDUCATOR JOURNAL

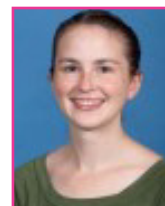
Three issues of the *Mathematics Teacher Educator* (MTE) journal were published in 2020 (March 2020, June 2020, September 2020). We attribute the increase in the number of issues from two to three to the work of the current and prior editors in clearly articulating a vision for the journal and sharing and educating authors about the journal criteria. The March 2020 issue included four articles that focused on a method for problematizing mathematical ideas with which teachers are already familiar (diverge then converge), teacher noticing, formative assessment, and a drawing activity to evoke teachers' visions of mathematics teaching. The March editorial highlighted the unique features of a MTE journal article and contrasted those features to a traditional research article. Four articles in the June 2020 issue were focused on formative assessment, launching complex tasks, design principles for examining student work with technology, and an example of how to support undergraduate research in mathematics education. The June editorial presented an analysis of keywords associated with articles that have been published in the MTE journal to identify where knowledge about particular topics is accumulating and where there are gaps. The September 2020 issue included four articles that described ways MTEs can collaborate with mathematics teachers to support preservice mathematics teachers' learning, how planted errors can be used in coached rehearsals, how to use analysis of student work to develop middle school mathematics teachers' knowledge, and an activity MTEs can use to explore relationships between real numbers and rational number sequences.



Karen Hollebrands
MTE Editor
North Carolina State
University



Valerie Faulkner
MTE Associate Editor
North Carolina State
University



Laura Bofferding
Associate Vice President
for MTE Journal
Purdue University

The editorial highlighted the importance of the innovation in a MTE article and provided examples of different types of innovations authors include in their manuscripts. The next issue will be published in February 2021, rather than March, because we are now publishing three issues per year. We anticipate publishing the first focus issue on Equity, Identity, and Power in June or September 2021.

Interviews with article authors have been podcasted beginning in 2018. This year we surpassed 14,500 downloads. It is interesting to note that more than 17% of podcast listeners are outside of the United States, demonstrating how the journal is expanding its impact and reach through podcasts. We are very grateful to Eva Thanheiser for her continued work as host of the podcast. While we had concerns about possible effects of COVID-19 on manuscript submissions, the number of manuscripts submitted Jan 1, 2020 – Dec 10, 2020 was 78. Last year (Jan 1, 2019 – Dec 31, 2019) 54 manuscripts were submitted. In February, we received 21 manuscripts in response to the focus issue call. Because of the pandemic, we have provided authors more time to submit revisions and additional time for reviewers to submit their feedback. Although we have had to invite more reviewers to secure three, this has not significantly impacted manuscript processing times. Most authors receive a decision on a submission within 2-3 months.

We would like to extend a thank you to the Editorial Panel members who will be finishing their terms of service in 2021: Laura Bofferding and Keith Leatham. Laura was the Chair of the committee and led the search for a new editor. We anticipate the new editors will begin in 2021.

MTE Journal Editorial Panel

Laura Bofferding, *Purdue University*; Keith Leatham, *Brigham Young University*; Zandra de Araujo, *University of Missouri*; Matthew Campbell, *West Virginia University*; Marrielle Myers, *Kennesaw State University*; Alison Superfine-Castro, *University of Illinois-Chicago*; Rajeev Virmani, *Sonoma State University*

CONNECTIONS! NEWSLETTER

Connections published four issues in 2020: March (Spring), June (Summer), September (Fall), and December (Winter). These issues contained updates and solicitations for AMTE, as well as 18 externally submitted articles, which underwent a blind review process by two members of the Editorial Panel and additional review by the Editor with support from the Vice President for Publications. These brief articles focused on a variety of pressing topics for mathematics teacher educators such as defining equity, developing anti-racist practice, recruitment of teachers, and conceptualizing mathematical knowledge for teaching. *Connections* had its first special call for articles, “Voices from the Field,” which emphasized field experiences of mathematics teacher educators during the COVID-19 health pandemic. This call resulted in a thematic collection of six brief articles describing challenges, responses, and lessons learned. Given the differing impacts of and responses to COVID-19 across states, universities, and PreK-12 schools, this exchange of ideas allowed members to learn from one another in varying contexts in a timely way. Moving forward, *Connections* looks to have additional special calls for articles focused on timely, needed and important topics that are emergent in nature.

Thank you to the members of the Editorial Panel for their hard work and dedication, particularly since the workload was increased this year with the addition of the special call for articles. A special thanks to Babette Benken, VP for Publications, for her support during the transition of editorship. The panel extends a welcome to two new members at the conclusion of the AMTE 2021 Annual Conference: Matthew Chedister, University of Wisconsin- La Cross, and Sarah Casten, Northern Kentucky University.

Connections Newsletter Editorial Panel

Rebecca Dibbs, *Texas A&M Commerce*; Sheryl Stump, *Ball State University*; Christine Trinter, *University of Notre Dame*; Ann Wallace, *James Madison University*



Susan Swars Auslander

Associate Vice-President for
Connections Newsletter
Georgia State University

CITE JOURNAL

In 2020, Co-Editors of *Contemporary Issues in Technology and Teacher Education -Mathematics* (CITE-Math), Shannon Driskell and Ann Wheeler, assigned reviewers to newly submitted manuscripts, discussed revisions, checked timelines of manuscripts, and conducted other business related to CITE-Math (e.g., writing reports, corresponding with reviewers). During the 2020 calendar year, we received 16 submissions; one of these manuscripts is currently being revised for resubmission, two are under initial review, nine were rejected, and five were published across the four issues. Additionally, in 2020, we continued to update and expand our pool of reviewers. We thank all of our reviewers for their service to the journal.

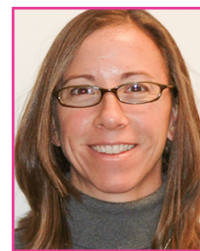
This year at the 2020 AMTE Annual Conference, we welcomed Tracy Goodson-Espy (Appalachian State University) and Mi Yeon Lee (Arizona State University) to the Editorial Panel. In November, we welcomed Jason Silverman (Drexel University) as an additional Editorial Panel member (the Panel expanded by one member).

To recruit high-quality manuscripts to CITE-Math, a poster was displayed at a table in the exhibition area during the 2020 Annual Conference. One Editorial Panel member sat at the table and answered questions about CITE-Math and provided both handouts and a business card to those who inquired about the journal. Sessions that addressed technology use in teacher education were identified and the handouts and business cards were distributed to presenters of these sessions with an invitation to submit their work to CITE-Math. These measures continue to help with the visibility of CITE-Math at the Annual Conference.

We continued to spread the word that CITE-Math encourages practitioners and research related articles. One effort was the 2020 AMTE Publication Session in which we presented this information along with the review criteria. At the 2021 AMTE Annual Conference, the Publication Session will allow attendees to meet in a small group with the editors and/or members of the Editorial Panel. In addition to our regular work in the coming year, we will continue to increase the visibility of CITE-Math and solicit high-quality submissions. We intend to continue to recruit potential authors at future AMTE conferences, the SITE Annual Meeting, and other related professional organizations, focusing attention on sessions that explore mathematics teacher education and the use of technology from new vantage points. We plan to emphasize that CITE-Math is a publication that covers mathematics, technology, and teacher education, and that a manuscript must include all three concepts. We will also point out that CITE-Math is a home for both practitioner and research articles.

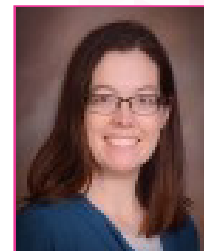
CITE Journal Editorial Panel

Chrystal Dean, *Appalachian State University*; Patricia Moyer-Packenham, *Utah State University*; JoAnn Cady, *University of Tennessee*; Allison McCulloch, *University of North Carolina*; Mi Yeon Lee, *Arizona State University*; Tracy Goodson-Espy, *Appalachian State University*



Shannon Driskell

Associate Vice-President for
CITE Journal
University of Dayton



Ann Wheeler

Associate Vice-President for
CITE Journal
Texas State University

PUBLICATIONS REVIEW

At the end of 2020, the Publications Review Committee (PRC) received proposals in response to the Call for Supplemental Materials to Support the Implementation of AMTE's *Standards for Preparing Teachers of Mathematics*. The Committee started reviewing these proposals and will report their recommendations to the Vice President for Publications, Babette Benken. A call for chapter proposals for Volume 5 of AMTE's Professional Book Series was released and proposals are expected at the beginning of 2021; the Committee will support blind review of these proposals.

The PRC welcomed two new members this past year: Lynn Hodge and Theresa Gurl. We greatly thank Drew Polly and Belinda Edwards, who will be leaving the PRC at the conclusion of the AMTE 2021 Annual Conference, for their service.



Óscar Chávez

Associate Vice-President for
Publications Review
Illinois State University

Publications Review Committee

Óscar Chávez, *Illinois State University*; Drew Polly, *University of North Carolina at Charlotte*; Belinda Edwards, *Kennesaw State University*; Jennifer Fillingim, *Madison Public Schools*; Ryan Higgins, *Coker College*; Lynn Hodge, *University of Tennessee*; Theresa Gurl, *Queens College CUNY*

ADVOCACY, EQUITY, & RESEARCH



Sarah van Ingen Lauer

Vice President for Advocacy, Equity,
& Research
University of South Florida

It is perhaps fitting that this year of 2020 (20/20), has been a year when the Advocacy, Equity, and Research division has focused on clarifying our vision and aligning our action with that vision. In a year of both international and national turmoil, the Associate Vice Presidents and committee members of this division have courageously and generously given of their time to advance the impact AMTE can make in the areas of advocacy, equity, and research. One of the most noticeable changes is our intentional renaming and refocusing of the Emerging Issues Committee into the Advocacy Committee. A clarified vision for this committee is enabling us to be more effective at both advocating for mathematics teacher education and providing advocacy tools to our membership. Please take some time to find new resources for anti-racist advocacy on our website. In addition, you will also find expanded conversations on equity in *Connections* articles as well as on our website. As you read each of the committee reports, I hope you are as filled with hope as I am about ways in which our membership volunteers are working together to be the change we so desperately need to see in the world today. I am enormously grateful for the collaborative leadership of our Board Member liaison, Christa Jackson, as well as the three Associate Vice Presidents: Zandra De Araujo, Carlos López Leiva, and Meghan Shaughnessy.

ADVOCACY

This year we completed our transition from the Emerging Issues Committee to the Advocacy Committee. This change was made to better align the committee with the mission and needs of AMTE. We have spent the year defining advocacy and revising our charge. As a committee, we define advocacy as follows:

Advocacy is the process of publicly supporting ideas or plans and/or influencing decisions. Advocacy can be enacted at a variety of levels (individual, community, organization, political) through a variety of outlets (conferences, media, legislation, community outreach and organization, publications, etc.). We acknowledge there are a variety of actions that may constitute advocacy as people work in service of more equitable societal outcomes.

This past year, we worked in collaboration with the Awards Committee to develop the call and criteria for the Karen King Advocacy Award, organized the Advocacy Session, and will create a webpage to share anti-racist teaching resources. We continue to keep an eye out for emerging issues and are working to continue to make AMTE more inclusive for all of our members.

Advocacy Committee

Zandra de Araujo, *University of Missouri*; Kristin Lesseig, *Washington State University Vancouver*; Robert Wieman, *Rowan University*; Jordan Register, *University of North Carolina Charlotte*; Eva Thanheiser, *Portland State University*



Zandra de Araujo

Associate Vice-President
for Advocacy
University of Missouri

EQUITY

This year, the Equity Committee continued exploring AMTE members' multiple perspectives on equity and how these perspectives both transfer into practices and align with the AMTE Equity Statement. The Committee's work can be summarized in three main initiatives: (a) the analysis of answers to the survey on AMTE members' definitions and practices of equity in Mathematics Teacher Education, (b) the dissemination of findings through briefs in the Equity Committee Conversation Corner (EC3) published in Connections, and (c) the gathering and organization of resources on Equity and Mathematics crucial topics identified through the Committee surveys and shared through the Equity Committee's site on the AMTE website. Join us during the Equity Committee's presentation at the AMTE annual conference for more details and share with us what you think.

Equity Committee

Kathleen Stoehr, *Santa Clara University*; Belinda Edwards, *Kennesaw State University*; Maria Zavala, *San Francisco State University*; Elizabeth Suazo-Flores, *Purdue University*; Crystal Kalinec-Craig, *University of Texas San Antonio*; Carlos López Leiva, *University of New Mexico*; Nicole M. Joseph, *Vanderbilt University*; Anthony Fernandes, *University of North Carolina at Charlotte*



Carlos López Leiva

Associate Vice-President
for Equity

University of New Mexico

RESEARCH

The Research Committee reviewed the 2018 NSSME+ report, a presentation about the report at the 2020 annual meeting, and the AMTE webinar about the report findings. We published an article in the AMTE Connections Newsletter focused on questions that the report findings raise for the mathematics teacher education community. We also completed the first installation in a series focused on connecting research and practice through an article focused on the work of Mary Kay Stein, Margaret (Peg) Smith, and Victoria (Vic) Bill, from the University of Pittsburgh. This article will be published on the AMTE website (see the research homepage) by the start of the conference. The Research Committee welcomed two new members this year: Leslie Dietiker and Mary Raygoza. We thank Winnie Ko, who will be leaving the Research Committee following the 2021 Annual Conference, for her service to the committee. Newly appointed Research Committee members beginning in 2021 are Frances Harper and Hector Torres.

Research Committee

Leslie Dietiker, *Boston University*; Mary Raygoza, *St. Mary's College of California*; Melissa Boston, *Duquesne University*; Chandra Orrill, *University of Massachusetts Dartmouth*; Yi-Yin (Winnie) Ko, *Indiana State University*; Meghan Shaughnessy, *University of Michigan*



Meghan Shaughnessy

Associate Vice-President for
Research

Boston University

COMMUNICATIONS & OUTREACH



Dusty Jones

Vice President for Communications
& Outreach

Sam Houston State University

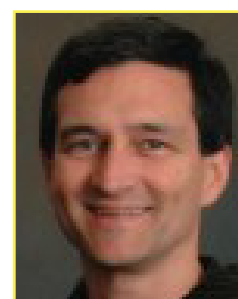
The Communications & Outreach Division facilitates AMTE's efforts to communicate information and resources to its members, sponsors, and donors. This Division encompasses all marketing, media, and sponsorship-related activities of the organization.

In the past year, the *Teaching Math Teaching Podcast* was launched with the goal of broadening participation in AMTE, giving listeners access to the sorts of encouraging and enlightening conversations that often happen during an AMTE conference. The podcast actively sought to represent mathematics teacher educators from a number of different backgrounds and professional settings. In 2021, the work of the division will continue and broaden the efforts from the past year that are listed in below in the reports for Communication, Sponsorship, Marketing, and STaR Fundraising.

Each of the Associate Vice-Presidents in this division began their roles in February of 2020, and I am very thankful for their service and professionalism throughout this year. I also wish to thank Mandy Jansen, the AMTE Director of Social Media, for her insight and efforts about how we can best communicate with and about AMTE through various platforms.

COMMUNICATIONS

The AMTE website continues to be the hub of communication to our members and the world, distributing over 3,000 pages of website content. In the past year there were 209,873 unique page views, which is about 7% less than last year. Our website and social media support the work of the organization through dissemination of opportunities and information and helps connect mathematics teacher educators. The website continues to host webinars, the Connections newsletter and other AMTE publications including the AMTE Standards for Preparing Teachers of Mathematics, as well as a well-used job-listings page, nominations and elections, awards, the STaR program and the annual conference. We also continue to enhance the annual conference with a mobile app. With our transition to CiviDesk as our web services support, we now have a fast, secure, and stable system for data management and reporting.



Steve Rhine

Associate Vice-President
for Communications

Pacific University

SPONSORSHIP

In 2020, we developed a workflow document and procedures for contacting and communicating with current and potential sponsors. This document streamlined the process for getting appropriate information to the AVP for Sponsorship, Executive Director, Treasurer, and members of the Conferences Committee who work with exhibitors. Many efforts were made to secure more sponsors this year, but the economic situation in 2020 has made many organizations understandably cautious. We are very thankful for the major sponsors in 2020: College Preparatory Mathematics (CPM) Educational Program, Maier Math Foundation/Math Learning Center, Information Age Publishing, and the National Council of Teachers of Mathematics.



Marilyn Evans

Associate Vice-President
for Sponsorship
Jackson State University

MARKETING

In 2020, discussions were facilitated with the AMTE Board of Directors to establish goals for a strategic marketing plan for the organization. At this time, the primary goal is to grow and diversify the membership of AMTE through the promotion of the benefits of membership, including resources and a nurturing professional community. In order to accomplish this goal, a plan of action will be organized to reach out to professionals from groups who are currently underrepresented in AMTE, including clinical faculty, K-12 supervisors and math coaches, professional development providers, faculty at two-year and community colleges, and faculty from historically Black colleges and universities, Hispanic-serving institutions, and more. The targeted outcome is to recruit new members and conference attendees as well as promote a diversified Influence on policies and practices in mathematics teacher education.



Sandi Cooper

Associate Vice-President
for Marketing
Baylor University

STaR FUNDRAISING

In 2020, the STaR Fundraising Committee challenged the first nine STaR cohorts each to support a 2021 STaR Fellow at \$1700 each. Major donors from previous years have also been contacted to seek additional support this year. We also sponsored a "Giving Tuesday" event in November to encourage AMTE members to support the STaR Program. The program currently has a balance of approximately \$14,000 to support the 2021 cohort. Additional contributions are always needed and welcomed.



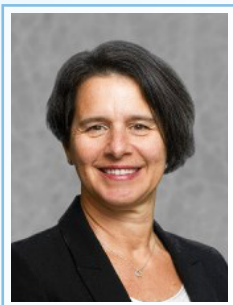
Jeff Wanko

Associate Vice-President
for STaR Fundraising
Miami University

STaR Fundraising Committee

Greg Gierhart, *Murray State University*; Lara Dick, *Bucknell University*; Matt Campbell, *West Virginia University*; Lisa Poling, *Appalachian State University*; Natasha Gerstenschlager, *Western Kentucky University*; Jeff Wanko, *Miami University*

2020

**Paola Sztajn**

North Carolina State University

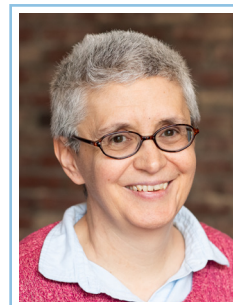
Presentation: Research and Mathematics Teacher Education: Triumphs, Trials, and Transitions

JUDITH E. JACOBS

Recognizes a distinguished mathematics teacher educator with an opportunity to challenge her or his colleagues on a topic of his or her choice in a plenary session at the Annual AMTE Conference.

The Judith Jacobs Lecture was established in 2003 to honor Dr. Judith E. Jacobs, one of the founding members of AMTE. Dr. Jacobs was instrumental in developing AMTE into a national organization and in the development of the AMTE conference with its current structure and emphasis on interaction. Judith Jacobs is an active member who served as the treasurer, the president, and as the first executive director. The Judith E. Jacobs was established after her tenure as executive director.

2021

**Marta Civil**

University of Arizona

Presentation: What Does It Mean to Be a Mathematics Teacher Educator?

EXCELLENCE AWARDS

In 2006, the AMTE Board of Directors established the AMTE Excellence in Mathematics Teacher Education Awards, to be presented at the Annual Conference on a three-year rotating basis: The Excellence in Teaching Award, the Nadine Bezuk Excellence in Leadership and Service Award, and the Excellence in Scholarship Award. In 2020, the Board of Directors added the Karen D. King Excellence in Advocacy Award. The Excellence Awards recognize annually a colleague for unique contributions that have made a significant and lasting impact in mathematics teacher education. The first Excellence in Teaching Award was given in 2006, the first Excellence in Leadership and Service Award in 2007, the first Excellence in Scholarship Award in 2008, and the first Excellence in Advocacy Award in 2020. Going forward, the awards will now be given on a four-year rotating basis.

2020

**AnnaMarie Conner**

University of Georgia

AMTE EXCELLENCE IN SCHOLARSHIP AWARD

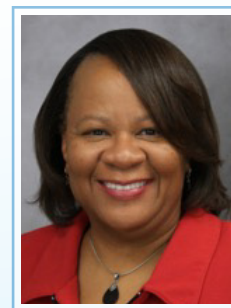
2021

**W Gary Martin**

Auburn University

AMTE EXCELLENCE IN TEACHING IN MATHEMATICS TEACHER EDUCATION AWARD

2021

**Dorothy Y. White**

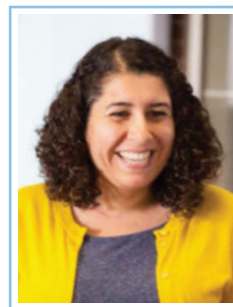
University of Georgia

KAREN D. KING EXCELLENCE IN ADVOCACY AWARD

AMTE EARLY CAREER AWARD

Since 2009, the AMTE Early Career Award recognizes a mathematics teacher educator who, while early in her or his career, has made distinguished contributions and shows exceptional potential for leadership in one or more areas of teaching, service, scholarship, or both.

2020



Zandra de Araujo
University of Missouri

2021



Lynsey Gibbons
Boston University

NATIONAL TECHNOLOGY LEADERSHIP INITIATIVE FELLOWSHIPS

Since 2000, the Society for Information Technology and Teacher Education (SITE) has collaborated with four teacher education associations representing the content areas of mathematics, science, English & language arts, and social studies education through the National Technology Leadership Initiative (NTLI). The NTLI fellowships were established to recognize exemplary presentations related to integration of technology in core content areas at the annual meetings of each participating association; in mathematics, that fellowship has been recognized at the AMTE Annual Conference.

AMTE identifies the recipient(s) of its NTLI fellowship through a competitive process that includes the submission of a paper in advance of the conference. The recipient of the award receives travel funding (\$1200, made possible by a donation by Texas Instruments) to participate and make a presentation at the SITE Annual Conference. The paper is forwarded and recommended for publication in the CITE journal by the AMTE Technology committee after additional review.

2020



Frances K. Harper
University of Tennessee



Zachary Stumbo
University of Tennessee



Nicholas Kim
University of Tennessee

2021



Nina Bailey
University of North Carolina at Charlotte



Demet Yalman Ozen
Middle Tennessee State University



Allison McCulloch
University of North Carolina at Charlotte



Lara Kristen Dick
Bucknell University



Jennifer Nickell Lovett
Middle Tennessee State University



Charity Cayton
East Carolina University

Manuscript: When Robots Invade the Neighborhood: Learning to Teach PK-5 Mathematics Leveraging Both Technology and Community Knowledge

Manuscript: Using a Framework to Teach Preservice Mathematics Teachers how to Professionally Notice within Technology Mediated Environments

MATHEMATICS TEACHER EDUCATOR OUTSTANDING REVIEWER AWARD

In 2017, at the request of the MTE Journal Editorial Panel, the AMTE Board of Directors established the *Mathematics Teacher Educator* (MTE) Outstanding Reviewer Award, to be presented each year at the Annual Conference. The purpose of the *Mathematics Teacher Educator* Outstanding Reviewer Award is to recognize a colleague who, through their service as a reviewer for the *Mathematics Teacher Educator* journal, provided exemplary reviews of the highest quality and value for editorial review of submitted scholarly manuscripts.

2020



Alyson Lischka

Middle Tennessee State
University

2021

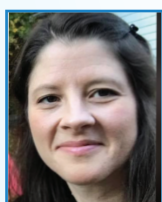


**Allyson Hallman-
Thrasher**

Ohio University

ELEMENTARY MATHEMATICS SPECIALIST SCHOLARSHIP

2020



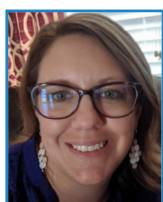
Nicole Williams

Liberty Corner, New Jersey



Jessica Jung

Rhineland, Wisconsin



Dana Hartzell

Pendleton, Indiana

The AMTE Elementary Mathematics Specialist Scholarship program provides support to classroom teachers in their development as elementary mathematics specialists. Elementary mathematics specialists work as teachers, teacher leaders, or coaches and they support effective mathematics instruction and student learning at the classroom, school, district, or state levels. The EMS Scholarships are funded through the generosity of AMTE sponsor, the Maier Math Foundation (www.mathlearningcenter.org/). Each recipient of the scholarship receives funding of \$2000 to help support their coursework towards an elementary mathematics specialist certificate or recognized endorsement.

SUSAN GAY GRADUATE STUDENT CONFERENCE TRAVEL SCHOLARSHIP

The Susan Gay Graduate Student Conference Travel Scholarship was established to provide financial support to graduate students to attend the AMTE Annual Conference. Awarded since 2012, this scholarship is named after Susan Gay in honor of her extraordinary service to AMTE over many years as the conference director, president, secretary, and board member-at-large. Typically, up to four graduate students receive this award each year, which covers the cost of graduate student early registration and an additional \$400 to offset the cost of attending the conference. Since there are no travel costs associated with attending the 2020 virtual conference, 26 graduate students were awarded early registration this year. To qualify for the scholarship, one must be a doctoral student making progress toward completion of a degree.

2020



Tye Campbell

The University of Alabama



**Katrina Stullken
Rothrock**

University of Kansas



Nina Gabrielle Bailey

University of North Carolina-Charlotte



Angela Google

Middle Tennessee State University

2021



Emily Garrido

Georgia State University



Fardowsa Mahdi

University of North Texas



Paula Santana

University of Central Florida



Phi Nguyen

University of Missouri



Ayse Ozturk

The Ohio State University



Stacy Jones

University of Texas at Austin



Demet Yalman Ozen

Middle Tennessee State University



Sean Freeland

West Virginia University



Amy (Amber) Brass

Penn State University



Maddy Ahearn

University of Oregon



John Elia

Pennsylvania State University



Sidney Jennings

*University of Wisconsin
-Madison*



Yency Choque

*University of Puerto Rico,
Rio Piedras Campus*



Siddhi Desai

University of Central Florida



Daniel Edelen

University of Central Florida



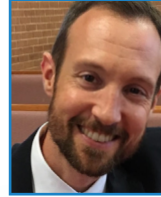
Sheila Orr

Michigan State University



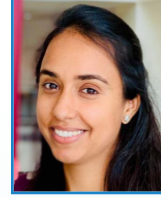
Keri Richburg

Auburn University



Ash Kizer

Auburn University



Pavneet Kaur Bharaj

Indiana University Bloomington



Emily Elrod

North Carolina State University



Frederique Yova

*North Carolina State
University*



Brandi Dailey

Auburn University



Josh Karr

West Virginia University



Hector I. Nieves

Boston University



Simon Byeonguk Han

Portland State University



Jinqing Liu

Indiana University

AMTE HEADQUARTERS

Executive Director (Governance, CFO, COO)

Shari Stockero
Term: 2020 - 2024

Financial Services Manager
Mary Beth Wallace

Admin / Graphic Design
Tony Nguyen

**Associate Vice-President
for Constitutions and
By-Laws**

*Constitutions and By-Laws
Committee*

Barbara Swartz

**Associate Vice-President
for Nominations and
Elections**

*Nominations and Elections
Committee*

Jenny Bay-Williams

Finance Committee Chair

Finance Committee

Sarah Quebec Fuentes

ELECTED MEMBERS OF THE BOARD

(Elected Board members serve as liaisons to the various divisions.)

President

Michael Steele
Term: 2019-2021

President-Elect

Megan Burton
Term: 2020-2021

Secretary

Cynthia Taylor
Term: 2020-2023

At-Large

Enrique Galindo
Term: 2019 - 2022

At-Large

Marrielle Myers
Term: 2020 - 2023

At-Large

Christa Jackson
Term: 2018 - 2021

Treasurer

Sarah Quebec Fuentes
Term: 2019 - 2022

Membership Division

Vice-President for Membership

Lisa Poling
Appointed to 2023

**Associate Vice-President
for Affiliates**

*Affiliate Connections
Committee*

Hartono Tjoe

**Associate Vice-President
for Membership**

Temple Walkowiak

**Associate Vice-President
for Awards**

Awards Committee

Amanda Sawyer

Professional Learning Division

Vice-President for Professional Learning

Jennifer Suh
Appointed to 2023

**Associate Vice-President
for Conferences**

Conferences Committee

Colleen Eddy

**Associate Vice-President
for Annual
Conference Program**

Conference Program Committee

Rick Hudson (2021)
Anna Marie Conner (2020)
Julie Amador (2022)

**Associate Vice-President
for Professional Development**

*Professional Development
for Members Committee*

Bill DeLeeuw

**Associate Vice-President
for STaR Fellows Program**

STaR Program Committee

Beth Herbel-Eisenmann /
Marta Civil

**Associate Vice-President
for Technology**

Technology Committee

Amanda Thomas

Publications Division

Vice-President for Publications

Babette Benken
Appointed to 2024

**Associate Vice-President
for MTE Journal
(Editorial Panel Chair)**

MTE Journal Editorial Panel

Laura Bofferding

**Associate Vice-President
for Connections!
Newsletter (Editor)**

*Connections! Newsletter
Committee*

Susan Swars Auslander

**Associate Vice-Presidents
for CITE Journal
(Co-Editors)**

Ann Wheeler
Shannon Driskell

**Associate Vice President
for Publications Review**

Publications Review Committee

Óscar Chávez

Advocacy, Equity, & Research Division

Vice-President for Advocacy, Equity, & Research

Sarah van Ingen Lauer
Appointed to 2022

**Associate Vice-President
for Advocacy**

Emerging Issues Committee

Zandra de Araujo

**Associate Vice-President
for Equity**

Equity Committee

Carlos López Leiva

**Associate Vice-President
for Research**

Research Committee

Meghan Shaughnessy

Communications & Outreach Division

Vice-President for Communications & Outreach

Dusty Jones
Appointed to 2022

**Associate Vice-President
for Communications**

Steve Rhine

**Associate Vice-President
for Sponsorship**

Marilyn Evans

**Associate Vice-President
for Marketing**

Sandi Cooper

**Associate Vice-President
for STaR Fundraising**

STaR Fundraising Committee

Jeff Wanko

